

Community-Based Air Quality Efforts in Disadvantaged Areas

Jo Kay Ghosh
Health Effects Officer
South Coast Air Quality Management District

NACAA Spring Meeting
April 29, 2019
Kansas City, MO



South Coast
AQMD

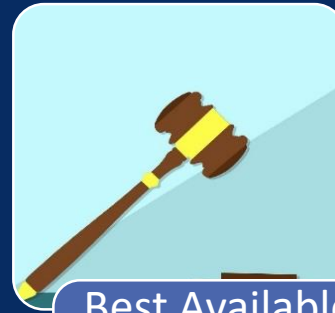
Key Elements of Assembly Bill (AB) 617



Community Air
Monitoring
and Emission
Reduction
Plans



Clean
Technology
Investments



Best Available
Retrofit
Control
Technology
(BARCT) Rules



Easier Access
to Emissions
Data



Key milestones

2018
2019
2019
2023

Oct

October 1– Deadline for CARB to set statewide strategy (select Year 1 communities, guidelines, benchmarks)

Jul

July 1 – Deadline for SCAQMD to deploy **air monitoring for YEAR 1 communities**

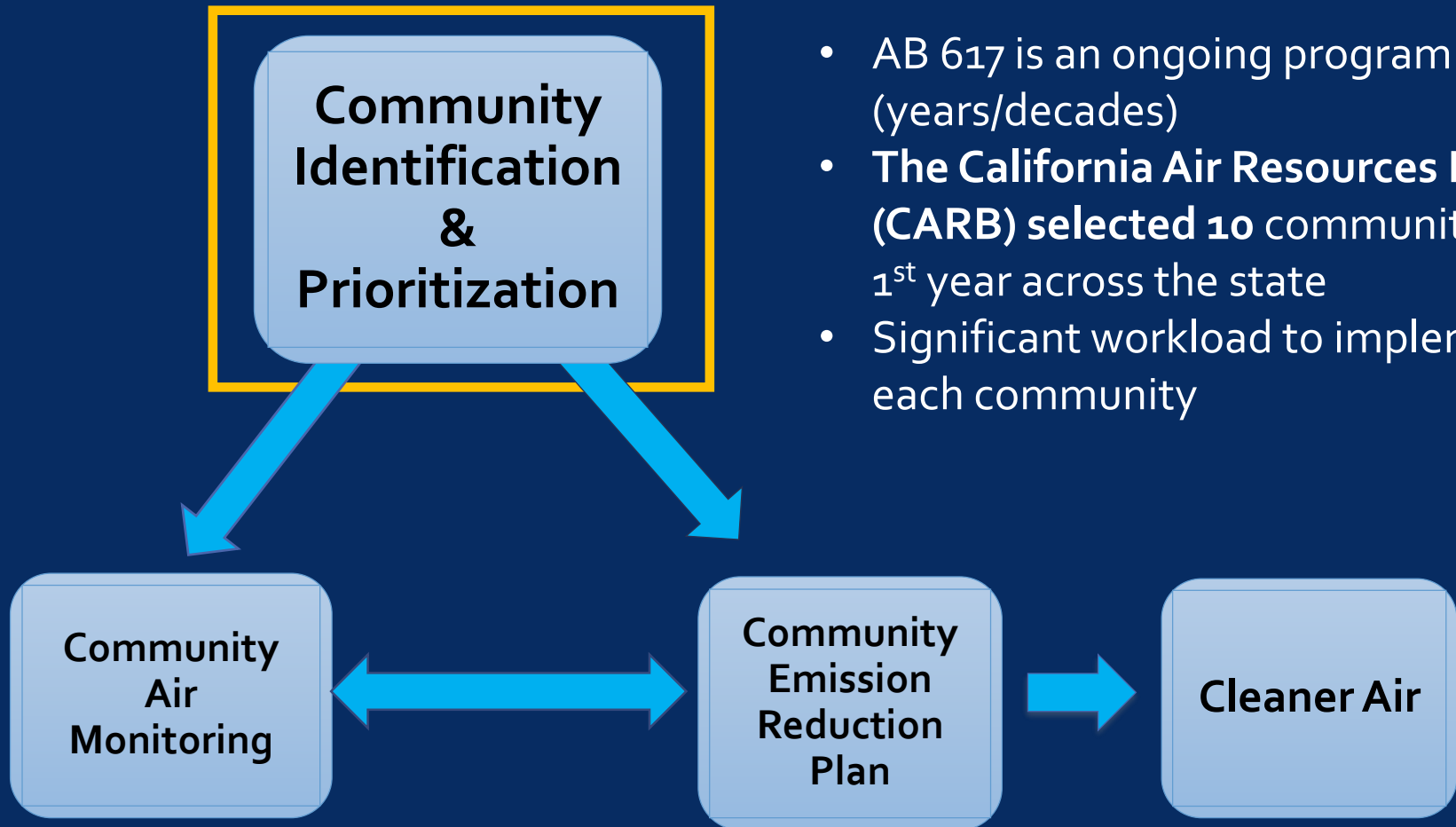
Sep

Sept 27 – Deadline for SCAQMD to adopt **emissions reduction plans for YEAR 1 communities**

Dec

December 31 – Deadline for SCAQMD to implement **Best Available Retrofit Control Technology (BARCT)**

Prioritizing environmental justice communities for the AB 617 program



- AB 617 is an ongoing program (years/decades)
- The California Air Resources Board (CARB) selected 10 communities for 1st year across the state
- Significant workload to implement in each community

Community Selection

Key input from the public

Air pollution sources

Diesel sources
(freeways, trucks,
warehouses, railyards)

Oil production &
processing (wells,
refineries)

Landfills, scrap yards,
hazardous waste sites

Proximity/land use factors

Schools near air
pollution
sources/
industrial areas

Concentration of
industries

Green spaces

Population factors

Population density

Low income

Communities of
color

Access to
healthcare

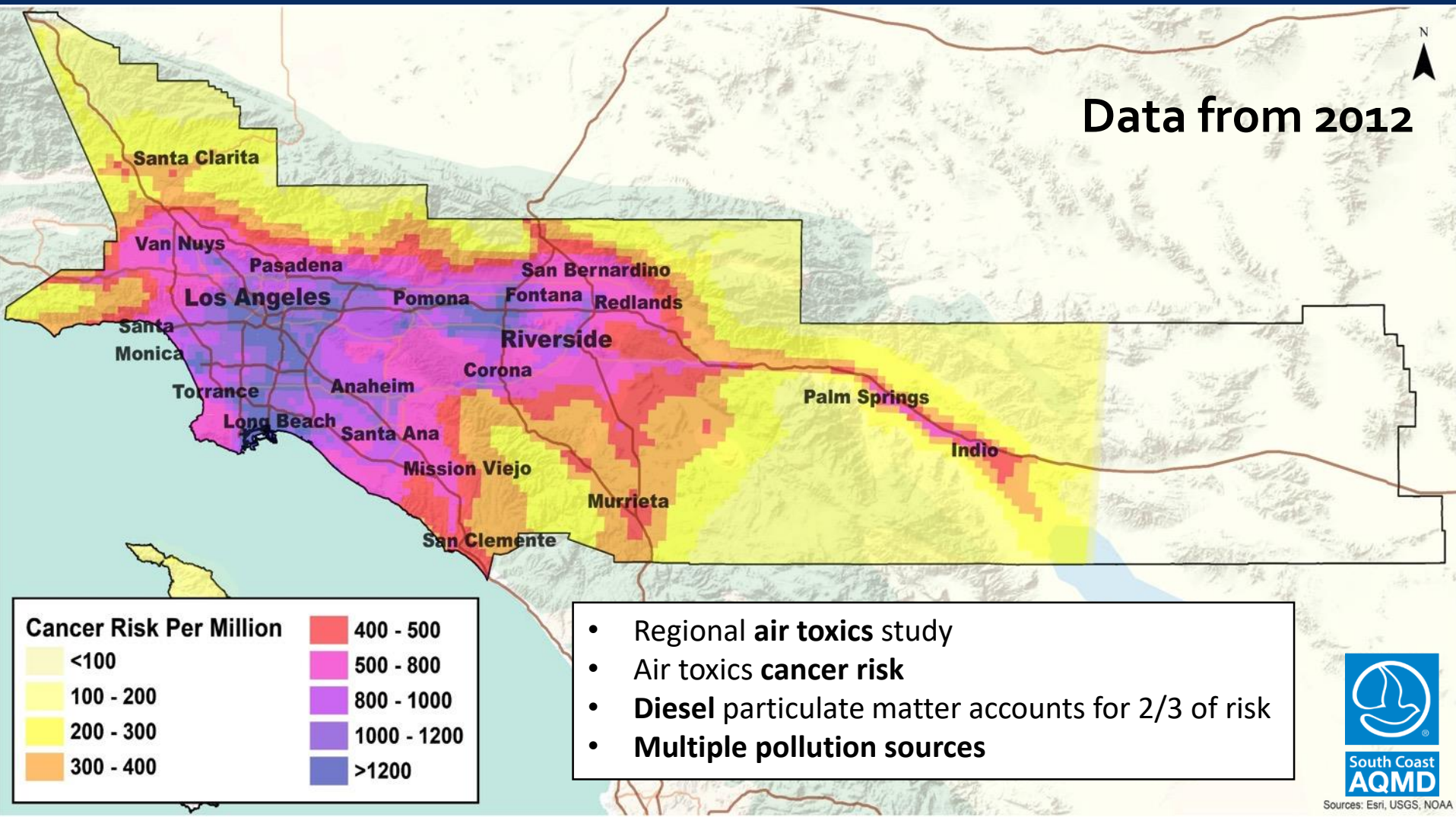
Asthma, cancer
rates

Education levels

Children & elderly



Multiple Air Toxics Exposure Study (MATES IV)



CalEnviroScreen 3.0 (OEHHA)

Pollution Burden

Exposures



Ozone



PM2.5



Diesel PM



Pesticide Use



Traffic



Drinking Water Contaminants



Toxic Releases from Facilities

Environmental Effects



Solid Waste Sites and Facilities



Cleanup Sites



Groundwater Threats



Impaired Water Bodies



Hazardous Waste Generators and Facilities

Population Characteristics

Sensitive Populations



Asthma



Cardiovascular Disease



Low Birth-Weight Infants

Social and Economic Factors



Poverty



Unemployment



Educational Attainment



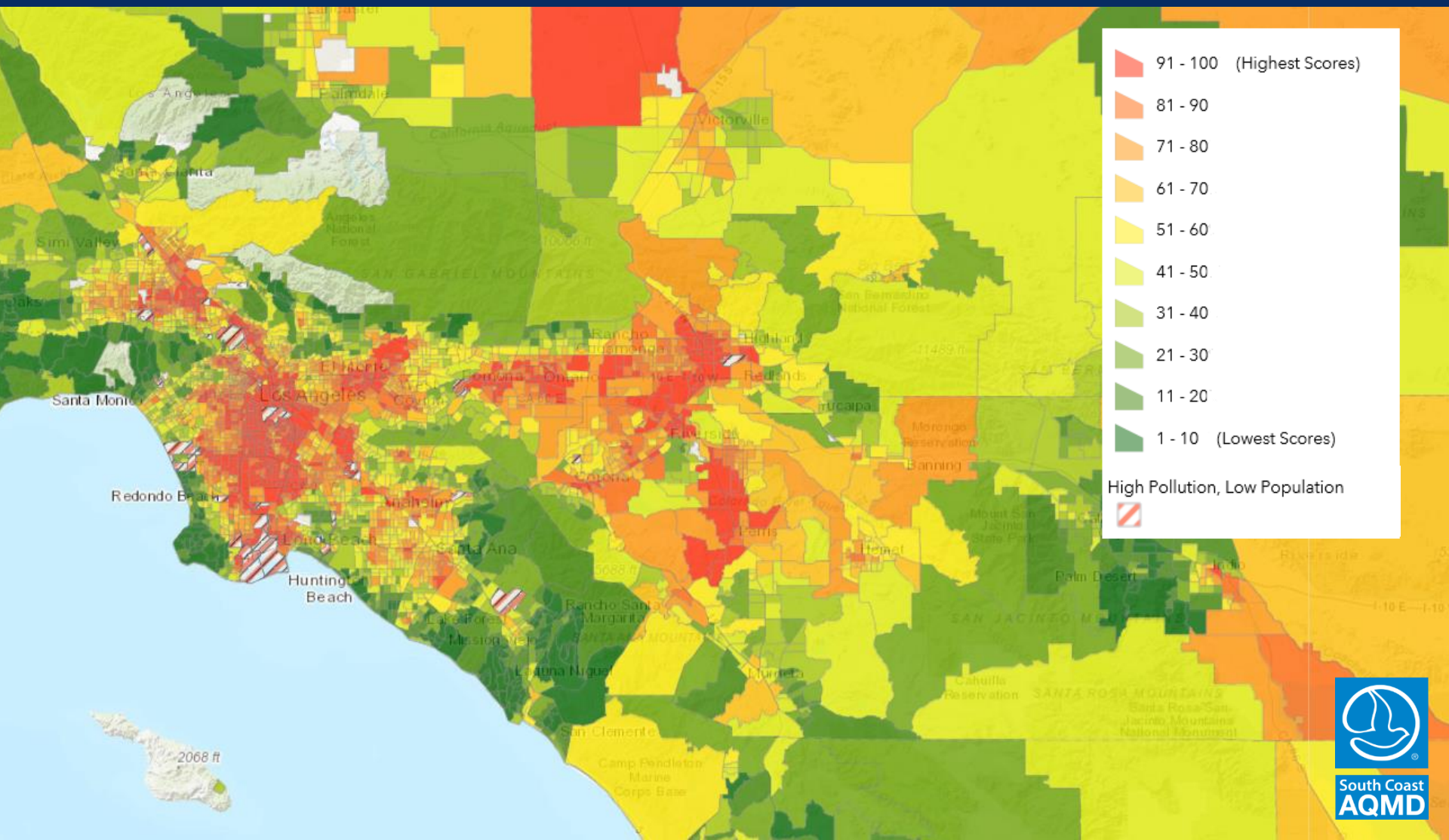
Linguistic Isolation



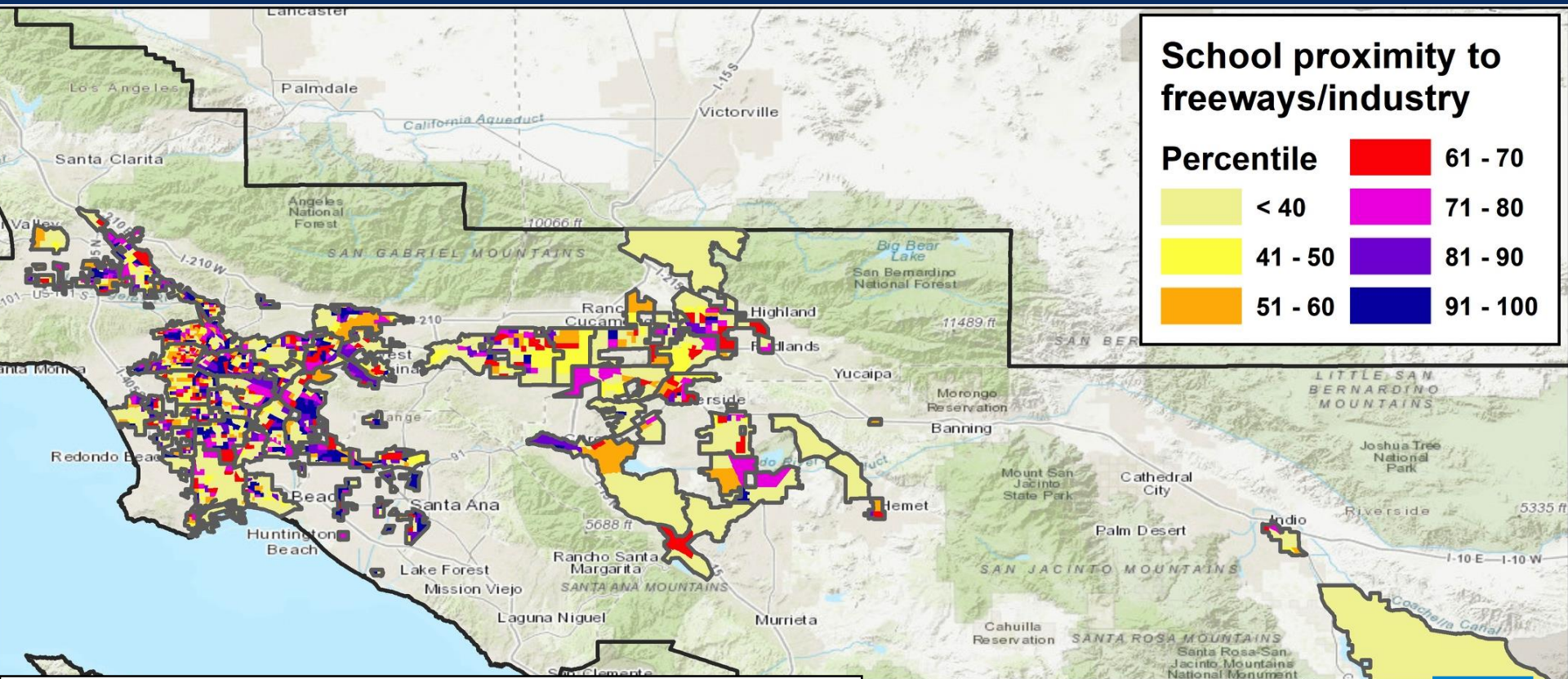
Housing Burdened Low Income Households

OEHHA:
Office of
Environmental
Health Hazard
Assessment
(State agency)

CalEnviroScreen 3.0 (OEHHA)



Schools near industrial areas and freeways



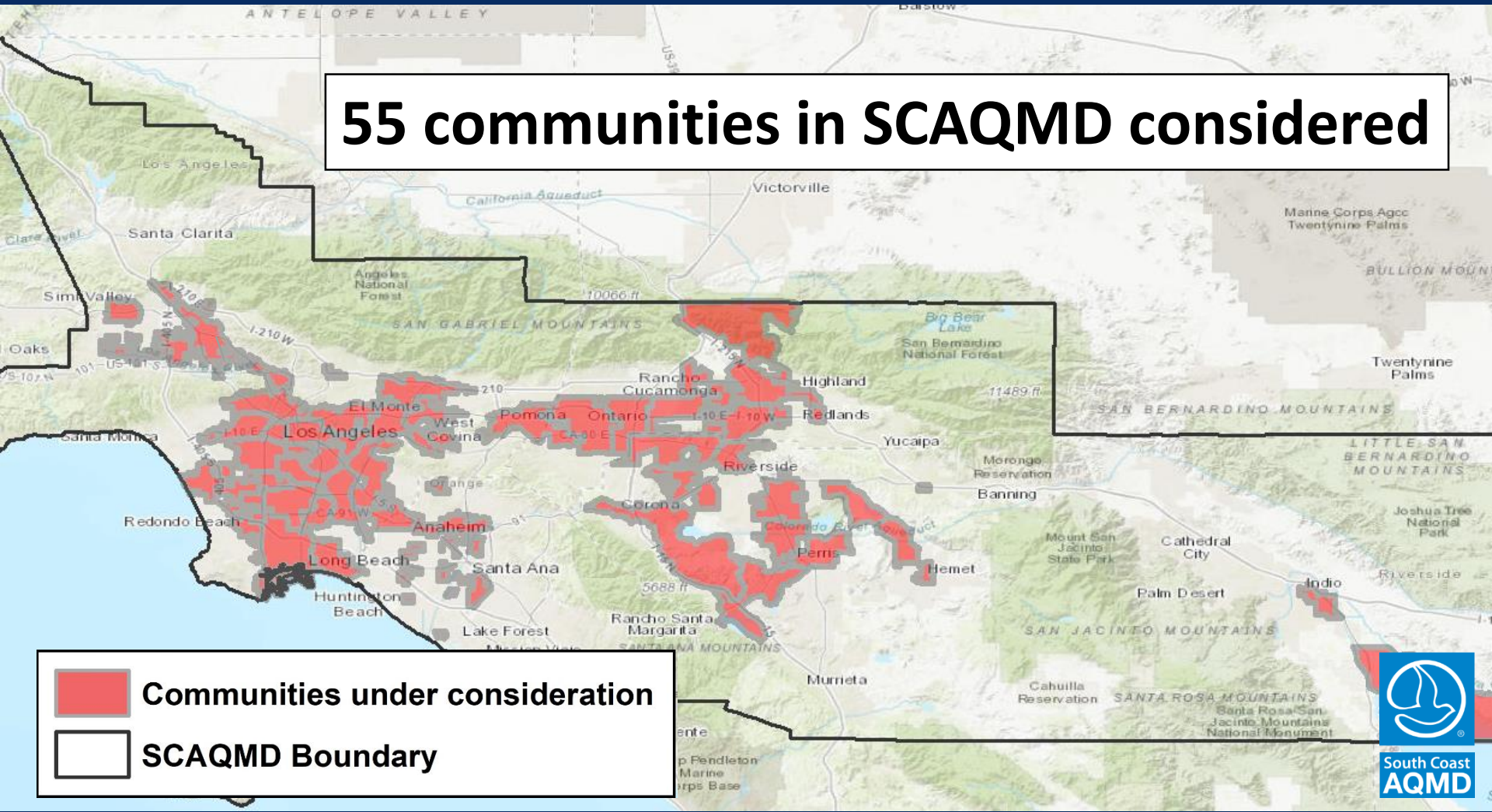
Evaluated the area within **1000 feet** of each school or daycare center for areas zoned for industrial use and freeways,

Map data by OpenStreetMap contributors, and the GIS User Community
 Data by HERE, DeLorme, Intermap, increment P Corp., GEBCO, USGS, FAO, NPS, IGN, Kadaster NL, Ordnance Survey, Esri Japan, METI, Esri China (Hong Kong)



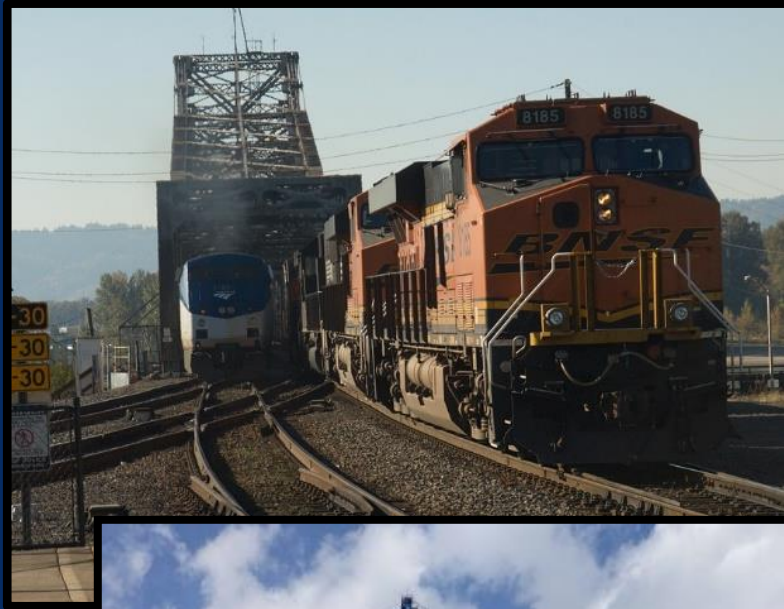
Map of communities under consideration for AB 617

55 communities in SCAQMD considered



-  Communities under consideration
-  SCAQMD Boundary

3 SCAQMD Communities Approved by CARB for Year 1



Wilmington, Carson, West
Long Beach

San Bernardino, Muscoy

Boyle Heights, East Los

Angeles, West Commerce



Community Steering Committee (CSC)

Purpose:

- Identify and prioritize air pollution issues
- Guide strategies for community plans

Members represent:

- Active residents
- Community organizations
- Local businesses, labor unions
- Local agencies
- Schools, hospitals
- Elected officials/staff



Community Steering Committee Timeline



Identify community air
quality concerns

**Oct 2018-
Jan 2019**



Prioritize concerns to
address through AB 617

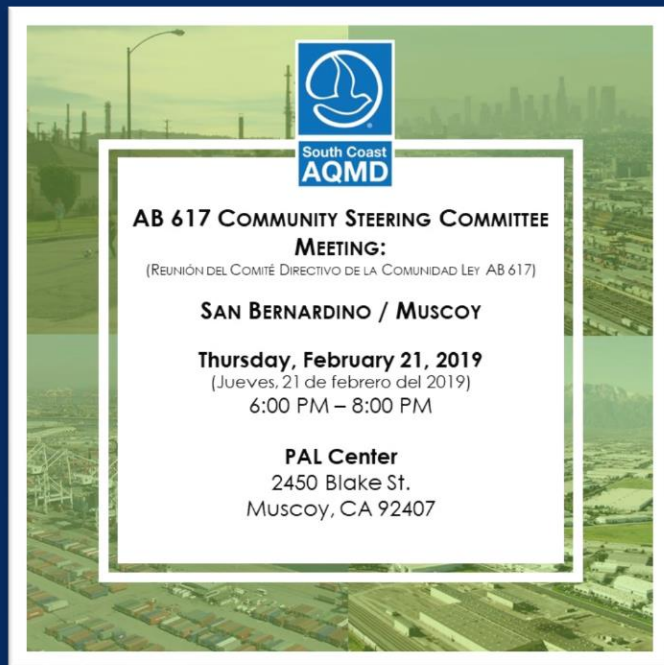
**Jan 2019-
Mar 2019**



Develop measures to
address priority concerns

**Mar 2019-
Sep 2019**

Community Steering Committee Meetings



South Coast Air Quality Management District - SCAQMD is live now — at Wilmington Senior Center. Just now · Wilmington, CA ·

LIVE: Our #Wilmington #AB617 Steering Committee meeting. (While our comment section remains open, please direct any questions or comments to ab617@aqmd.gov or visit aqmd.gov/ab617 for more info.)



Meetings include:

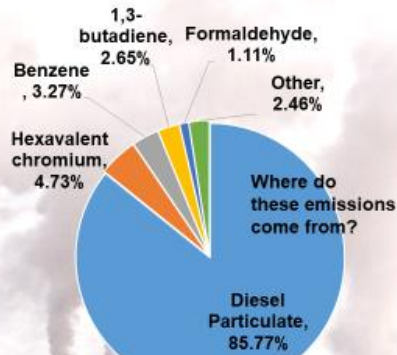
- Cohosts and/or outside facilitator
- Materials in English and Spanish
- Language interpretation
- Community affairs table
- Refreshments



South Coast
AQMD

Air Quality Data and Concerns

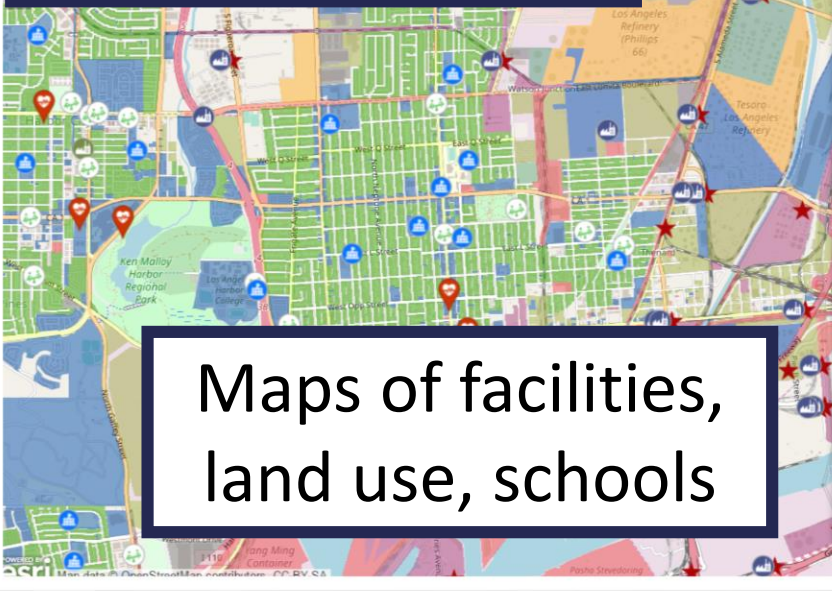
Main air toxics in the community



Diesel particulate has the highest impact in the community

Other toxics may have impacts in areas close to the sources

Air pollution data



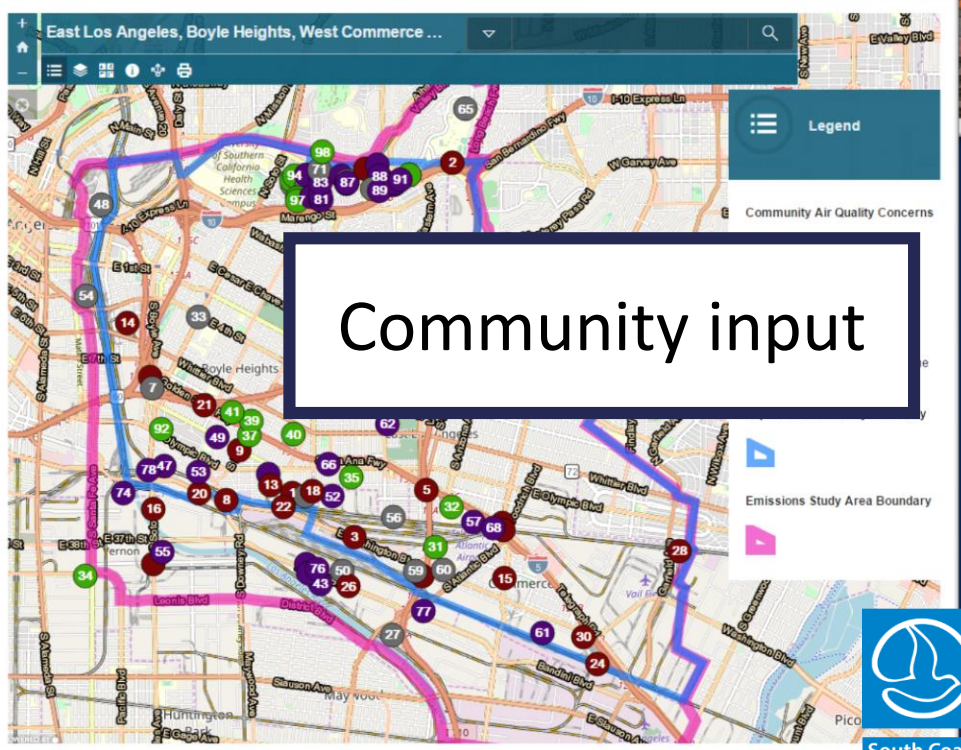
San Bernardino, Muscoy Community

The community of San Bernardino, Muscoy was selected as a "Year 1" AB617 community, with preliminary boundaries. The following maps detail important air pollution sources and receptors within the community, which may help inform recommendations for the finalizing the boundaries for the Impacted Community and the Emissions Study Area.

The Impacted Community is defined as the area of the community where people live, work, go to school, and spend the majority of their time.

The Emissions Study Area includes the sources that affect the Impacted Community.

The maps show data for the area three miles beyond the preliminary community boundaries to provide a sense of the land use and air pollution sources within the community and near the community.



Community input

Wilmington, Carson, West Long Beach

Highest priority issues identified:

- Refineries
- Ports
- Neighborhood Truck Traffic



San Bernardino, Muscoy



Highest priority issues identified:

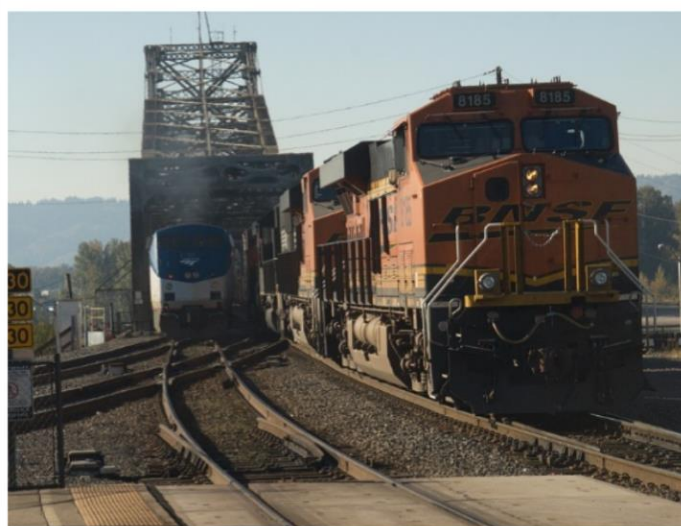
- Neighborhood Truck Traffic, especially Warehouse-related
- BNSF Rail Yard
- Warehousing



East Los Angeles, Boyle Heights, West Commerce

Highest priority issues identified:

- Neighborhood Truck Traffic, Freeways
- Warehouses (and Trucks)
- Rail Yard Emissions



Potential strategies for community plans



Regulations



Incentives



Targeted
Monitoring



Enhanced
Enforcement



Public Information
& Outreach



Inter-Agency
Collaboration

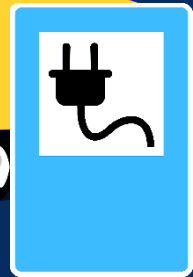


Exposure
Reduction (Air
Filtration, etc.)

Integrating Strategies Example: Diesel Truck Emissions



Monitoring and data to identify “frequent flyers”



Targeted Incentives



Targeted Enforcement Sweeps



Work with other agencies on truck routes, traffic signal timing



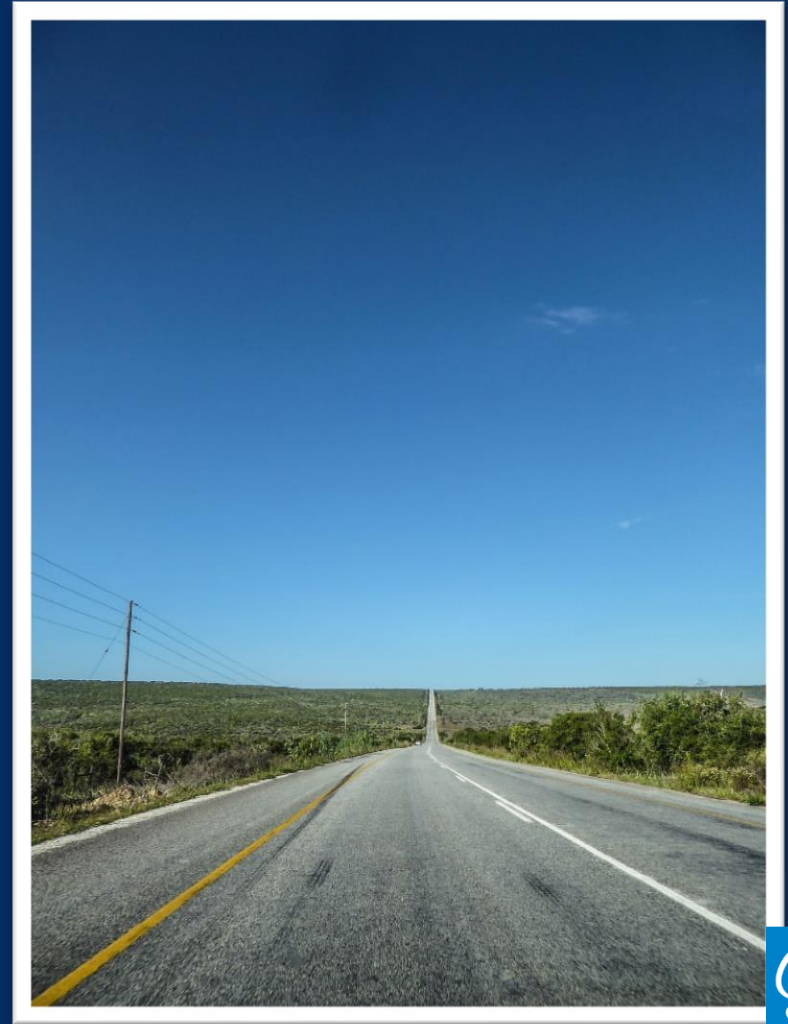
Challenges ahead for AB 617

Upcoming Work:

- Identify Year 2 communities
- Implement Year 1 Community Plans while developing plans for Year 2 communities

Funding:

- Estimated \$30.7 million per year needed for program sustainability
- Additional funding needed for incentive programs
- Diminishing funds for more communities statewide



Thank you!

Jo Kay Ghosh
Health Effects Officer
jghosh@aqmd.gov

Questions or Comments?

