

# Responding to the Wildfire Smoke Public Health Crisis and Lessons Learned for the Future

Presented by *Mark McMillan*, Deputy Director, Colorado APCD

Special thanks to *Dr. Scott Landes*



# Colorado APCD Forecasting Unit

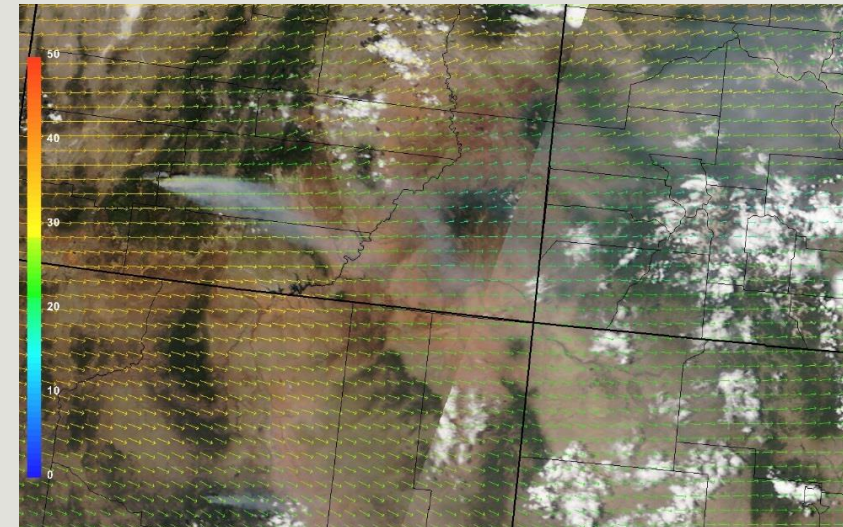
The Forecasting Unit issues air quality forecasts twice a day through our own system (via website and e-mails), and once a day through the EPA's AirNow website.

A Colorado Smoke Outlook is updated twice daily on the CDPHE APCD website.

Air Quality Health Advisories will be issued anywhere in the state when conditions warrant, including for wildfire smoke.

## Tools for forecasting wildfire smoke

- Satellite and radar imagery
- Meteorological models for various levels of the atmosphere
- Air quality specific models (BlueSky, HRRR, NOAA, CO-FPS)
- Monitor data ( $PM_{2.5}$ )



# Monitoring Wildfire Smoke

---

- CDPHE network (stationary)
- U.S. Forest Service cache (mobile)
- PurpleAir (commercial, non-regulatory)
- Other agencies (National Park Service, Southern Ute Reservation)



# Air Quality Notifications

## Air Quality Health Advisory for Wildfire Smoke

Issued for portions of southwestern Colorado  
Issued at 8:00 AM MDT, Thursday, June 7, 2018

Issued by the *Colorado Department of Public Health and Environment*

**Affected Area:** portions of southwestern Colorado, including La Plata, San Juan and Hinsdale Counties. Cities include, but are not limited to, Durango, Rockwood, Hermosa, Silverton and Lake City.

**Advisory in Effect:** 8:00 AM MDT, Thursday, June 7, 2018 to 9:00 AM MDT, Friday, June 8, 2018.

**Public Health Recommendations:** If smoke is thick or becomes thick in your neighborhood you may want to remain indoors. *This is especially true for those with heart disease, respiratory illnesses, the very young, and the elderly.* Consider limiting outdoor activity when moderate to heavy smoke is present. Consider relocating temporarily if smoke is present indoors and is making you ill. *If visibility is less than 5 miles in smoke in your neighborhood, smoke has reached levels that are unhealthy.*

**Outlook:** Heavy smoke has been observed throughout large parts of La Plata County Thursday morning, particularly along the Animas River from the fire location southward to the New Mexico state line. This will impact locations including Hermosa, Durango and the Southern Ute Reservation. The smoke will gradually decrease Thursday morning as atmospheric mixing increases. By Thursday afternoon smoke will begin to move in a northeasterly direction, which could bring periods of moderate to heavy smoke to rural parts of northeastern La Plata County, along with sections of San Juan and Hinsdale Counties. This could impact locations such as Silverton and Lake City Thursday afternoon and evening. Late Thursday night the winds will calm, and smoke will again drain southward along the Animas River and produce moderate to heavy smoke Friday morning in areas such as Hermosa, Durango and points southward to the New Mexico state line.

For the latest Smoke Outlook, visit:  
<http://www.colorado.gov/airquality/addendum.aspx#smoke>

For more information about smoke and your health, visit:  
<http://www.colorado.gov/airquality/wildfire.aspx>

For the latest Colorado statewide air quality conditions, forecasts, and advisories, visit:  
[http://www.colorado.gov/airquality/colorado\\_summary.aspx](http://www.colorado.gov/airquality/colorado_summary.aspx)

Social Media:  
<http://www.facebook.com/cdphe.apcd>  
<http://twitter.com/cdpheapcd>

[https://www.colorado.gov/airquality/colo\\_advisory.aspx](https://www.colorado.gov/airquality/colo_advisory.aspx)



# How do we distribute our Air Quality Health Advisories?

---

- E-mail subscription service (colorado.airquality)
- CDPHE Website ([https://www.colorado.gov/airquality/colo\\_advisory.aspx](https://www.colorado.gov/airquality/colo_advisory.aspx))
- Twitter (<http://twitter.com/cdpheapcd>)
- Facebook (<http://facebook.com/cdphe.apcd>)



Durango, CO 6/7/18

# Questions?

CDPHE APCD advisory page

- [https://www.colorado.gov/airquality/colo\\_advisory.aspx](https://www.colorado.gov/airquality/colo_advisory.aspx)

E-mail Listserve

- [https://www.colorado.gov/airquality/request\\_alerts.aspx](https://www.colorado.gov/airquality/request_alerts.aspx)
- Request Colorado.AirQuality for statewide advisories

Social Media

- <https://www.facebook.com/cdphe.apcd>
- <https://twitter.com/cdpheapcd>

Scott.Landes@state.co.us

