

Update for States and Regions

10/4/12

Presentation by Mike Barrette

[barrette.michael@epa.gov](mailto:barrette.michael@epa.gov)

# Background

- In March 2011, EPA launched CWA Comparative Maps and Dashboards as part of Enforcement and Compliance History Online (ECHO).
  - The purpose of this website is to make it easier for the public to see state performance and trends.
- As a follow-up, OECA committed to releasing similar features for other media – starting with CAA and RCRA in 2012.
- Rather than building off the original custom-coded website, OECA decided to build the new dashboards with a modernized Oracle database – using the latest business intelligence and GIS software.
- OECA will shortly release a beta site for Regional/state comment.
- After completing CAA and RCRA, and converting the CWA version to the new modernized platform, OECA will accept public comments while also working on SDWA and other statutes.
- Tweaks to the site in 2013 will be based on public use patterns and comments.

# Key Aspects of Comparative Maps and Dashboards

- Uses a variety of data sources – primarily originating from AFS, PCS, ICIS-NPDES and RCRAInfo.
- Leverages SRF data to the extent possible.
  - Frozen Round 3 data for 2011
  - Production Round 3 data pulls for past years and current year
  - Will utilize frozen data in future (after freeze completes)
- Standardized to yearly view of data (primarily FY unless otherwise noted)
- Uses other data sources such as the CWA Annual Noncompliance Report, permit backlog data from OW, and other program system data.
- Will continue to be “iterative” where items are added and subtracted based on use, popularity, etc.
- Will start with a 5 year time horizon for most data views.

# Review Period Sequencing

- There will be an overall review period project page that will provide Regions and states with the overall status and sequencing of data releases, along with a list of known bugs.
- Reviewers can sign up for email updates, and can comment online as items are found.
- Beta Version 0.1 – early October Roll-out
  - Will feature CAA, CWA, and RCRA Dashboard “Activity Views.”
  - Some drill downs will be available for RCRA and CAA.
  - Comparative Maps for CAA and RCRA (CWA for navigation purposes only)
- OECA will be rolling out updates – normally on a weekly basis to get information out to reviewers as quickly as possible.
- Sequence of new features planned
  - Complete drill downs for RCRA and CAA
  - Add CWA Drill Downs/Comparative Maps
  - Add Performance Views for Dashboards (CAA and RCRA)
  - Add Performance Views (CWA)
  - Augment Comparative Maps with Additional Data Views
  - Incorporate State Comments Received (will be done throughout review period)
- Version 1.0 – late December
  - Release to Public
- Version 1.1 – Spring ‘13 – Changes based on public comments and addition of some new data views.

# Changes to ECHO Homepage

Before

The screenshot shows the ECHO homepage with a blue header. On the left, there is a banner for the "2010 CWA Annual Noncompliance Report for Non-Major Facilities" with a magnifying glass over a bar chart. On the right, there is a search box with fields for ZIP and Address, and buttons for "Map Search" and "Table Search". Below the search box are navigation buttons: "Data Alerts", "Sign up for Updates", "Refresh Dates", "Comments/Feedback", and "Report Violation". The main content area starts with a welcome message and a list of features. Below this is a "Mapping Applications" section with a list of links: "EPA-State Annual Enforcement Actions", "National CWA Trends Map", "Go to CWA State Dashboard", and "Mapping Center". At the bottom, there are three navigation buttons: "Search for Facilities", "Analytics and Trends", and "Reports & Resources".

**ECHO In My Community**

ZIP Address

ZIP Code

Map Search Table Search

\*Map Search\* and \*Table Search\* results may vary. [More information.](#) Drinking water data are not yet included.

Data Alerts Sign up for Updates Refresh Dates Comments/Feedback Report Violation

Welcome to the EPA's Enforcement and Compliance History Online (ECHO)

- ECHO provides fast, integrated searches of EPA and state data for 800,000+ regulated facilities.
- ECHO integrates inspection, violation, and enforcement for the Clean Water Act, Clean Air Act, and hazardous waste laws.
- ECHO also includes Safe Drinking Water Act data, Toxics Release Inventory data, National Emissions Inventory data, and Water Quality Data ([read more about new features](#)).

Mouse over areas below to:

- search for facilities,
- review state by state analytics and trends,
- or to review contextual reports and information.

**Mapping Applications**

- EPA-State Annual Enforcement Actions
- National CWA Trends Map
- Go to CWA State Dashboard [More Selected](#)
- Mapping Center

Search for Facilities Analytics and Trends Reports & Resources

After

The screenshot shows the updated ECHO homepage. The banner on the left now features "New Air, Water, and Hazardous Waste Comparative Maps and State Dashboards" with a map of the United States. The search box and navigation buttons remain the same. The main content area is updated with a new "Performance and Trends" section, which is highlighted with a red box. This section includes links for "Go to State Comparative Maps", "Go to State Dashboards", and "Information for Reviewers". The "Mapping Applications" section is also updated, now including "ECHO Mapping" with sub-links for "Mapping Center", "EPA-State Annual Enforcement Actions", and "Mapping Widget". The bottom navigation buttons are also present.

**ECHO In My Community**

ZIP Address

ZIP Code

Map Search Table Search

\*Map Search\* and \*Table Search\* results may vary. [More information.](#) Drinking water data are not yet included.

Data Alerts Sign up for Updates Refresh Dates Comments/Feedback Report Violation

Welcome to the EPA's Enforcement and Compliance History Online (ECHO)

- ECHO provides fast, integrated searches of EPA and state data for 800,000+ regulated facilities.
- ECHO integrates inspection, violation, and enforcement for the Clean Water Act, Clean Air Act, and hazardous waste laws.
- ECHO also includes Safe Drinking Water Act data, Toxics Release Inventory data, National Emissions Inventory data, and Water Quality Data ([read more about new features](#)).

**Performance and Trends**

- Go to State Comparative Maps
- Go to State Dashboards [More Selected](#)
- Information for Reviewers

**ECHO Mapping**

- Mapping Center
- EPA-State Annual Enforcement Actions
- Mapping Widget

Mouse over areas below to search for facilities, review state by state analytics and trends, or to review contextual reports and information.

Search for Facilities Analytics and Trends Reports & Resources

# Review Period Home Page



## Enforcement & Compliance History Online (ECHO)

[Recent Additions](#) | [Contact Us](#)

You are here: [EPA Home](#) » [Compliance and Enforcement](#) » [ECHO](#) » Comparative Maps and Dashboards Review Period

- ECHO Home
- All Data Search
- Air Data Search
- Water Data Search
- Drinking Water Data Search BETA
- Hazardous Waste Search
- EPA Enforcement Cases Search
- EPA Criminal Cases Search New
- EPA Enforcement SEP Search
- Multiple ID Search
- Performance and Trends New
- About the Site
- About the Data
- More State Data
- Related Links
- Frequently Asked Questions
- Site Map

## Comparative Maps and Dashboards Project Status Page



*This page is to keep government reviewers up to date on the project status.*

In March 2011, EPA released version 1 of the Clean Water Act State [Comparative Maps](#) and [Dashboards](#). Launch of this website was a key component of the Agency's ongoing efforts to provide more transparent information to the public regarding compliance and enforcement. After completing this first set of maps and dashboards for the CWA, a follow-on project was announced that would:

1. expand the maps to other media, and
2. use enhanced technology and software to deliver a better and more sustainable product.

To accomplish these goals, EPA will release new [comparative maps](#) and [state dashboards](#), starting with Clean Air Act and RCRA, while upgrading the existing Clean Water Act site. The new site will incorporate enhanced business intelligence and geospatial software that allows users to graphically view enforcement and compliance data and drill into these reports to better understand the data behind them. The maps and dashboards will be a living project - meaning that EPA will monitor use of each aspect of the project and will add or subtract features as needed based on web use patterns.

During 2012, EPA developed the new format for the dashboards and maps and provided several briefings to states and state associations about the progress of the project. EPA completed the database modernization component of the project and is now building out the maps and dashboards. The website that is linked below is a work in progress that provides a good look at how the information is organized. EPA would like feedback from Regional, state, local, and tribal partners prior to the time that the site is launched to the public (anticipated for December 2012).

As you review the site, you will find that a green comment button is available - allowing you to send in any information you would like. Throughout October, November and December, EPA will continue adding data views. Most data views draw upon data in the State Review Framework, the Clean Water Act Annual Noncompliance Report, and other data associated with national data sets such as AFS, PCS, ICIS-NPDES and RCRAInfo. EPA plans to launch the site in ECHO by the end of the calendar year. The sooner we receive your comments, the more time we will have to evaluate them and make necessary site adjustments. Note that the site allows you to subscribe to updates - we will notify you of important additions or changes to the site if you subscribe. Dashboards and Maps for other media, such as SDWA will be developed in 2013.

The Site Status area below will provide you with current information on what is completed, and what is on the way. Feel free to comment as often as you would like.

**Site Status (last updated 9/21/12)**

### Sign-up for State Dashboard and Comparative Map Updates

To receive email notices about important updates to the State Dashboard and Comparative Maps, or to manage your subscription preferences, please enter your email address below, then click on the "Submit" button:

Email Address

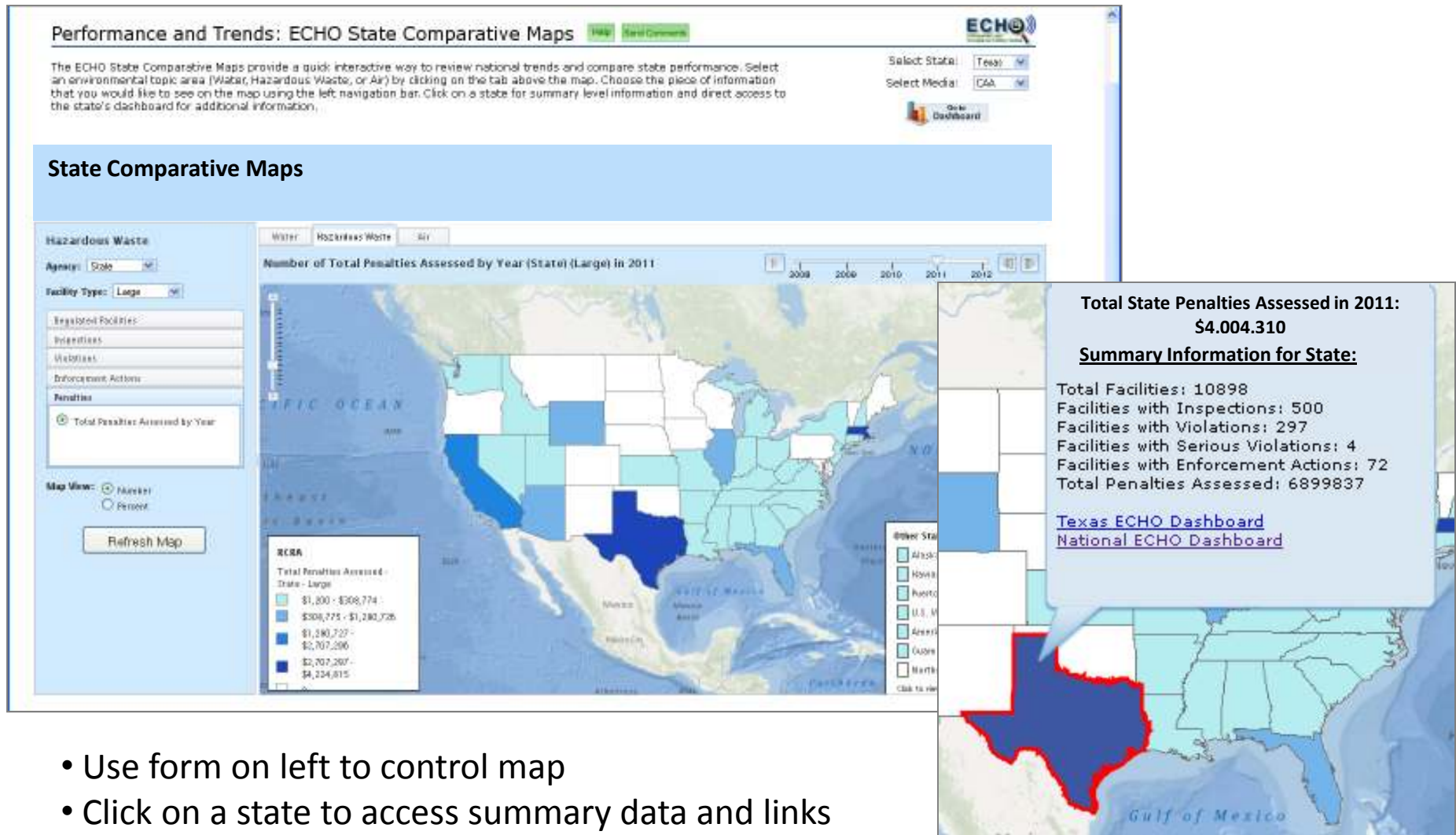
Submit

[EXIT Disclaimer](#) Clicking on Submit will take you to GovDelivery, a contractor that EPA uses to manage mailing lists.

*Page will include known problems, documentation, and a list of updates that occurred with dates.*

# State Comparative Maps

\*Screen Captures Below Will Change Slightly Before Beta Version is Released for Comment.



- Use form on left to control map
- Click on a state to access summary data and links



# Dashboards (Navigation/Top)

## Performance and Trends: Texas Hazardous Waste State Dashboard

[Help](#)
[Send Comments](#)
[Sign up for Updates](#)



The Resource Conservation and Recovery Act of 1976 (RCRA) established a regulatory structure for the management of solid and hazardous wastes. This law and its associated regulations are intended to ensure proper management and disposal of hazardous waste. A significant component of the RCRA program is tracking, including hazardous waste manifests, facility record keeping, and biennial waste reports. State dashboards provide an easy-to-use summary of key activities to answer questions like: which facilities are regulated, how many have been inspected, and how many have violations and enforcement taken.



[Information for Reviewers](#)
[View Dashboard Full Screen](#)

Air **Hazardous Waste** Water
State Texas

Performance Dashboard **Activity Dashboard**
?

**Facilities Regulated**

Fiscal Year: 2011

**Inspections**

View More: Facilities Inspected by State and EPA Apply Reset

**Violations**

View More: Facilities with New Violations in Fiscal Year Apply Reset

Facility Type	Count
TSDFs	91
LQGs	1,364
SQGs	3,015
Others	6,516

[Refresh](#) - [Print](#) - [Export](#)

Year	State	EPA
2008	~780	~50
2009	~550	~30
2010	~680	~30
2011	~500	~30
2012	~350	~20

[Refresh](#) - [Print](#) - [Export](#)

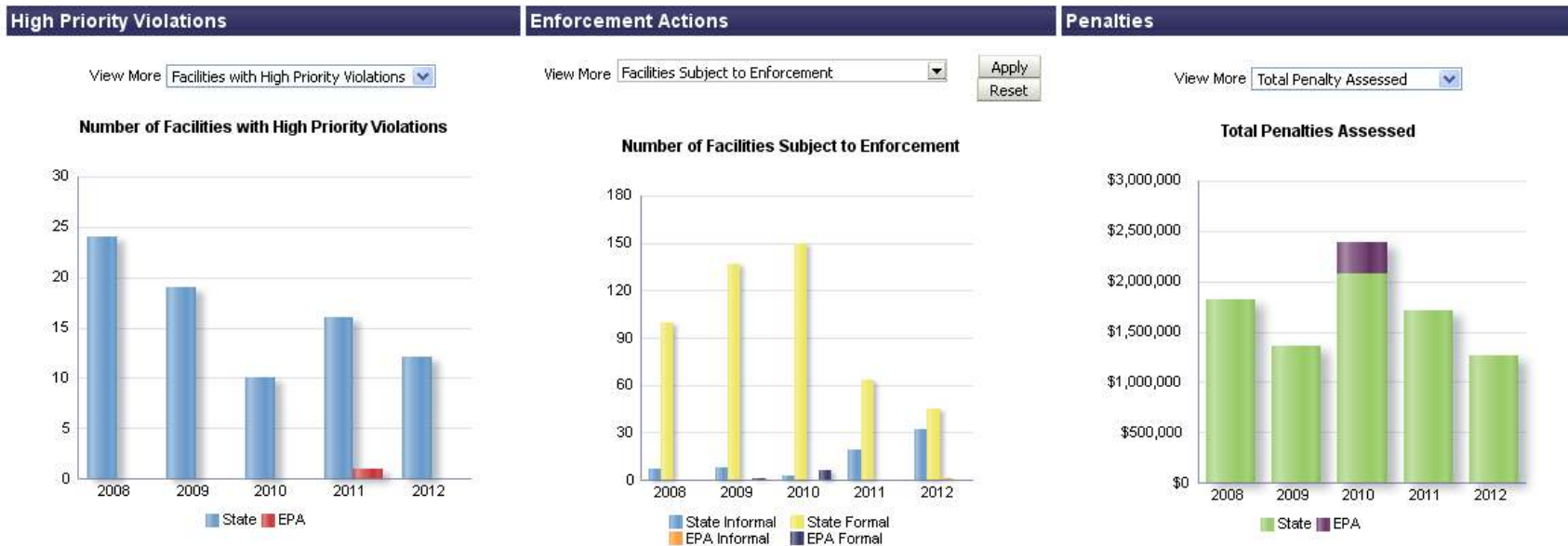
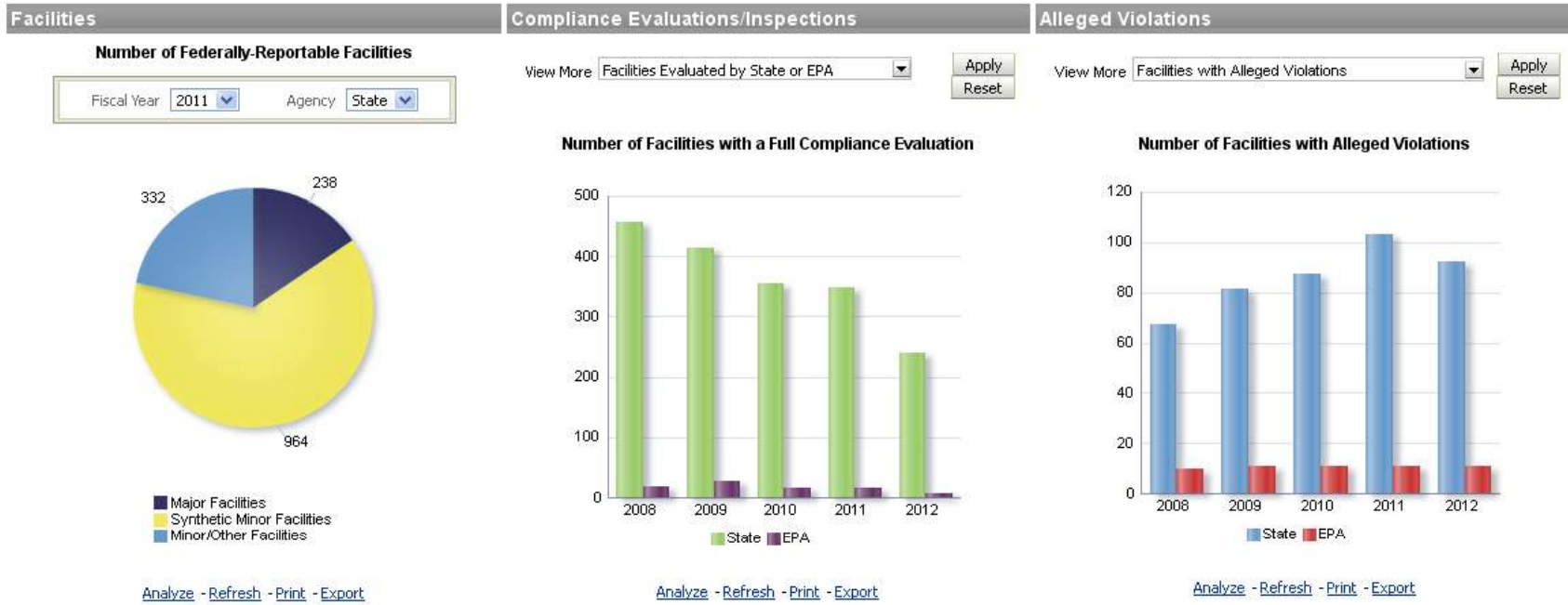
Year	State	EPA
2008	~380	~10
2009	~330	~10
2010	~400	~10
2011	~300	~10
2012	~200	~10

[Refresh](#) - [Print](#) - [Export](#)

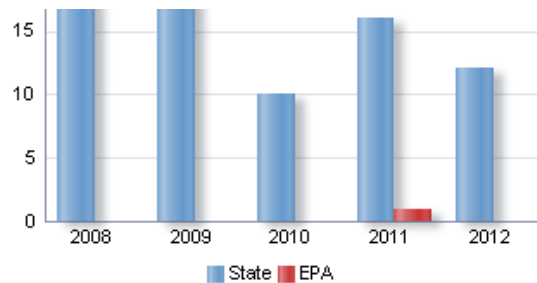




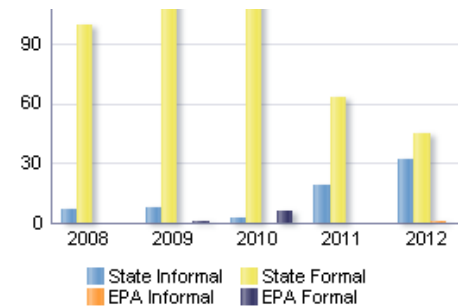
# Dashboards (Middle – 6 graph format)



# Dashboards (Bottom of Page - Links)



[Analyze](#) - [Refresh](#) - [Print](#) - [Export](#)



[Analyze](#) - [Refresh](#) - [Print](#) - [Export](#)



[Analyze](#) - [Refresh](#) - [Print](#) - [Export](#)

powered by **ORA**

## State Review Framework

The State Review Framework (SRF) is a tool used by EPA to consistently assess each state and local agencies' enforcement of the Clean Air Act, the Clean Water Act, and hazardous waste laws; and the SRF tracks recommendations made by EPA for state and local agencies to improve their compliance and enforcement programs. The information presented in these boxes is from SRF Round 2. Round 3 will be available soon.

- [SRF National Homepage](#)
- [SRF Recommendation Report](#)
- [SRF Round 3 Query \(coming soon\)](#)

## Data Download and Data Corrections

- [Comments on State Data](#)
- [ECHO Exporter](#)
- [How to Report an Error](#)
- [Annual Noncompliance Reports](#)

## Common Questions

*What types of facilities are regulated by the Clean Air Act?*

*Where does the data come from - is the data frozen, or does it use production data from the systems?*

*How can I find CAA compliance and enforcement information for a specific facility?*

*Where can I find emissions and chemical release data for a facility?*

*How can I find air quality information for an area of interest to me?*

*Does EPA require that all violations or permit deviations at every air emission source be reported to them?*

*How can I download detailed information about compliance and enforcement activity?*

## Air Quality in State

- [AirNow - The official EPA real-time air quality website](#)
- [AirData - Gives you access to air quality data collected at outdoor monitors across the United States](#)
- [MyEnvironment](#)
- [Toxics Release Inventory Search](#)

## Other Resources

- [State Environmental Web site](#)
- [Ultraviolet \(UV\) Index](#)
- [EPA and State Enforcement Action Map](#)
- [Toxics Release Inventory Comparative Tool](#)
- [ECHO Air Search](#)
- [Greenhouse Gas Emissions](#)

# Drill Down to Facility Details

- EPA's new Dashboards provide more powerful analytics – allowing users to check data below graphs by clicking on a bar and drilling down.
- EPA is still working to turn on all the drill downs, and make them specific to each bar.

**Compliance Evaluations/Inspections**

View More: Facilities Evaluated by State or EPA Apply Reset

**Number of Facilities with a Full Compliance Evaluation**

Year	State	EPA
2008	650	10
2009	650	10
2010	650	10
2011	650	10
2012	10	10

**FCE Facility and Activity Details - Summary**

Agency	# of Evaluations	# of Facilities
STATE	192	191
EPA	5	5
<b>Grand Total</b>	<b>197</b>	<b>196</b>

**FCE Facility and Activity Details**

Facility ID	Facility Name	Street Address	City	State	Action Description	Date Conducted (YYYYMMDD)
4800500002	DIBOLL LUMBER OPERATION 100 MILL STREET	600 A ST	DIBOLL	Texas	STATE CONDUCTED FCE/ON-SITE	090603
4800500007	GEORGIA-PACIFIC RESINS LUFKIN PLANT	1429 E LUFKIN AVE	LUFKIN	Texas	STATE CONDUCTED FCE/ON-SITE	090712
4800500015	LUFKIN INDUSTRIES OILFIELD DIVISION	7305 HWY 69 S	LUFKIN	Texas	STATE CONDUCTED FCE/ON-SITE	090805
4801100003	CLAUDE COMPRESSOR STATION	1111 S 103RD ST	OMAHA	Texas	STATE CONDUCTED FCE/ON-SITE	090310
4802100003	HANSON BRICK ELGIN FACILITY	506 HIGHWAY 290 E	ELGIN	Texas	STATE CONDUCTED FCE/ON-SITE	090514
4802100013	BASTROP ENERGY CENTER	125 OLD BASTROP RD	CEDAR CREEK	Texas	STATE CONDUCTED FCE/ON-SITE	090818
4802900005	V H BRAUNIG A VON ROSENBERG PLANT	15290 STREICH RD	SAN ANTONIO	Texas	STATE CONDUCTED FCE/ON-SITE	090826
4802900068	ALAMO CEMENT 1604 PLANT	6055 W GREEN MOUNTAIN RD	SAN ANTONIO	Texas	STATE CONDUCTED FCE/ON-SITE	081126
4803900667	SEABREEZE ENVIRONMENTAL LANDFILL	10310 FM 523	ANGLETON	Texas	STATE CONDUCTED FCE/ON-SITE	090608
4803900729	FREEPORT LNG IMPORT TERMINAL	1500 LAMAR ST	QUINTANA	Texas	STATE CONDUCTED FCE/ON-SITE	090828
4805700026	POINT COMFORT CRYOGENIC GAS PLANT	103 FANNIN RD	POINT COMFORT	Texas	STATE CONDUCTED FCE/ON-SITE	090428
4806100005	SILAS RAY POWER PLANT	94 WEST 13TH ST BROWNSVILLE TX	BROWNSVILLE	Texas	STATE CONDUCTED FCE/ON-SITE	090527
4806100034	VALLEY CO-OP HARLINGEN FACILITY	1901 N EXPRESSWAY 77	HARLINGEN	Texas	STATE CONDUCTED FCE/ON-SITE	090814
4806100087	CHEM-PRUF DOOR	5224 FM 802	BROWNSVILLE	Texas	STATE CONDUCTED FCE/ON-SITE	090527
4806500044	BURNETT A COMPRESSOR STATION	11 MI S OF BORGER ON HWY 207,	BORGER	Texas	STATE CONDUCTED	090706

Click to Drill Down

# How to Participate and Comment

- EPA will email a link to the home page for the Review Period (planned release within 7-10 days). The OTIS Lab and homepage will also contain that link.
- That page will be frequently updated with status reports, etc.
- The site will look “live” but is using the OTIS security protection – meaning that you have to be behind an approved firewall to test.
- The green “Submit Comment” button on the site will allow you to provide EPA with suggestions or report bugs.
- Because this site is a work in progress, we expect that you will help us identify items to correct. Please be patient as the site may from time to time be brought down to allow us push updates into production.
- If you find something we have not listed as a known problem – please let us know.

# Development Team

- Dashboard Programming
  - Jason Swift, Carey Johnston, Rebecca Kane
- Database Design and Development
  - Leads - John Veresh and Andrew Schulman
  - Charles Tamulonis, Jerry Lappan
- Web Design
  - Allison Landsman (Maps)
  - Melissa Saddler (Dashboards)
- Thanks to others that assisted on the project, including contractors: Abt, Guident, and INDUS and the Office of Environmental Information (OEI).