

Interstate Air Transport Workshop for the 2008 Ozone NAAQS April 8, 2015

Rob Kaleel
Lake Michigan Air Directors Consortium

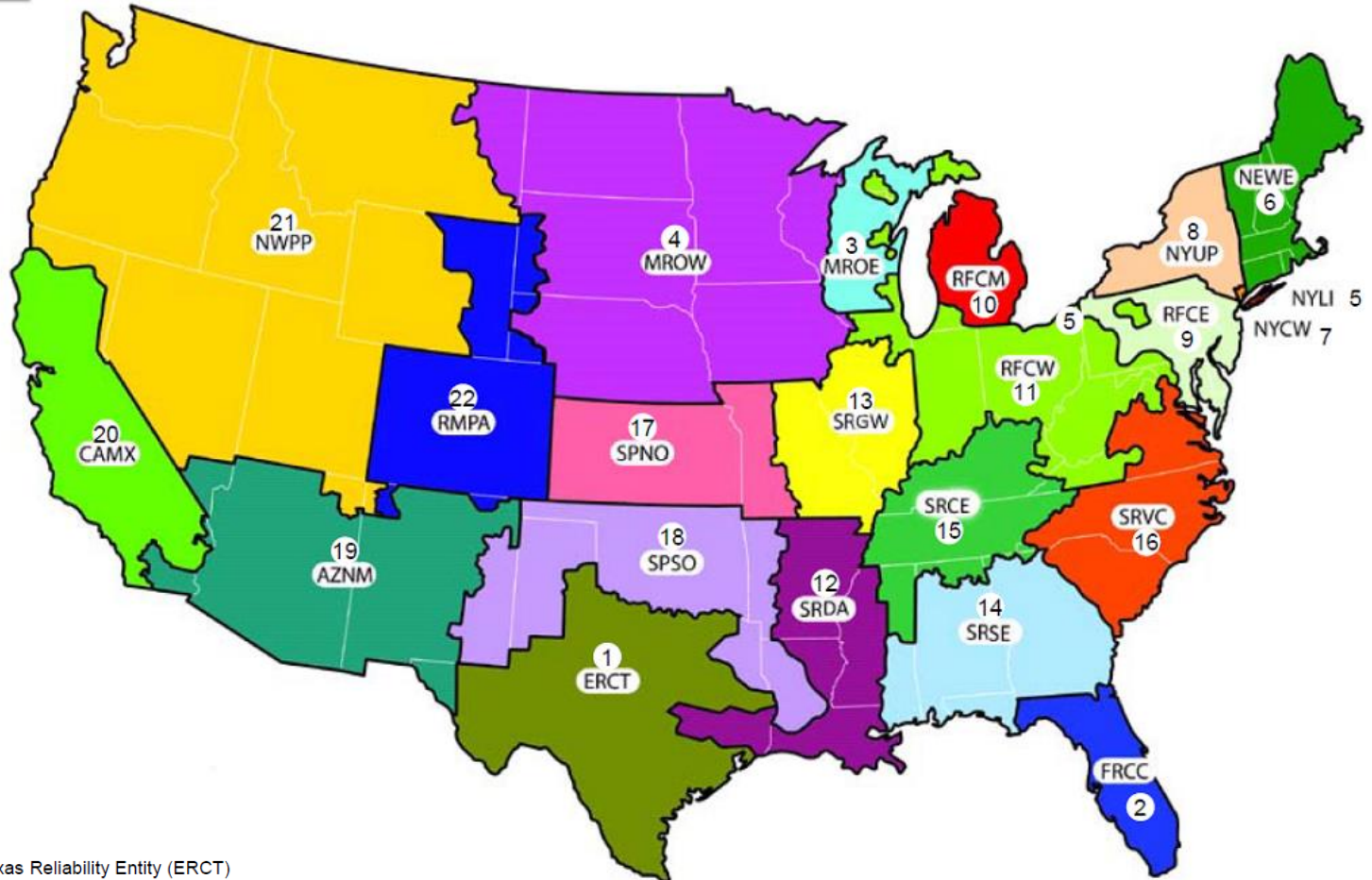
Overview

- ▶ Projected controls, shut-downs, and new units – LADCO States
- ▶ Current and historical SCR performance on coal EGU's – LADCO States
- ▶ Potential air quality benefits from SCR - SNCR optimization



Electricity Market Module Regions

NEMS22Reg



1 – Texas Reliability Entity (ERCT)

2 – Florida Reliability Coordinating Council (FRCC)

3 – Midwest Reliability Organization – East (MROE)

4 – Midwest Reliability Organization – West (MROW)

5 – Northeast Power Coordinating Council / Northeast (NEWE)

6 – Northeast Power Coordinating Council / NYC – Westchester (NYCS)

7 – Northeast Power Coordinating Council / Long Island (NYLI)

8 – Northeast Power Coordinating Council / Upstate New York (NYUP)

9 – Reliability First Corporation/ East (RFCE)

10 – Reliability First Corporation/Michigan (RFCM)

11 – Reliability First Corporation/West (RFCW)

12 – SERC Reliability Corporation / Delta (SRDA)

13 – SERC Reliability Corporation / Gateway (SRGW)

14 – SERC Reliability Corporation / Southeastern (SRSE)

15 – SERC Reliability Corporation / Central (SRCE)

16 – SERC Reliability Corporation / Virginia-Carolina (SRVC)

17 – Southwest Power Pool Regional Entity / North (SPNO)

18 – Southwest Power Pool Regional Entity / South (SPSO)

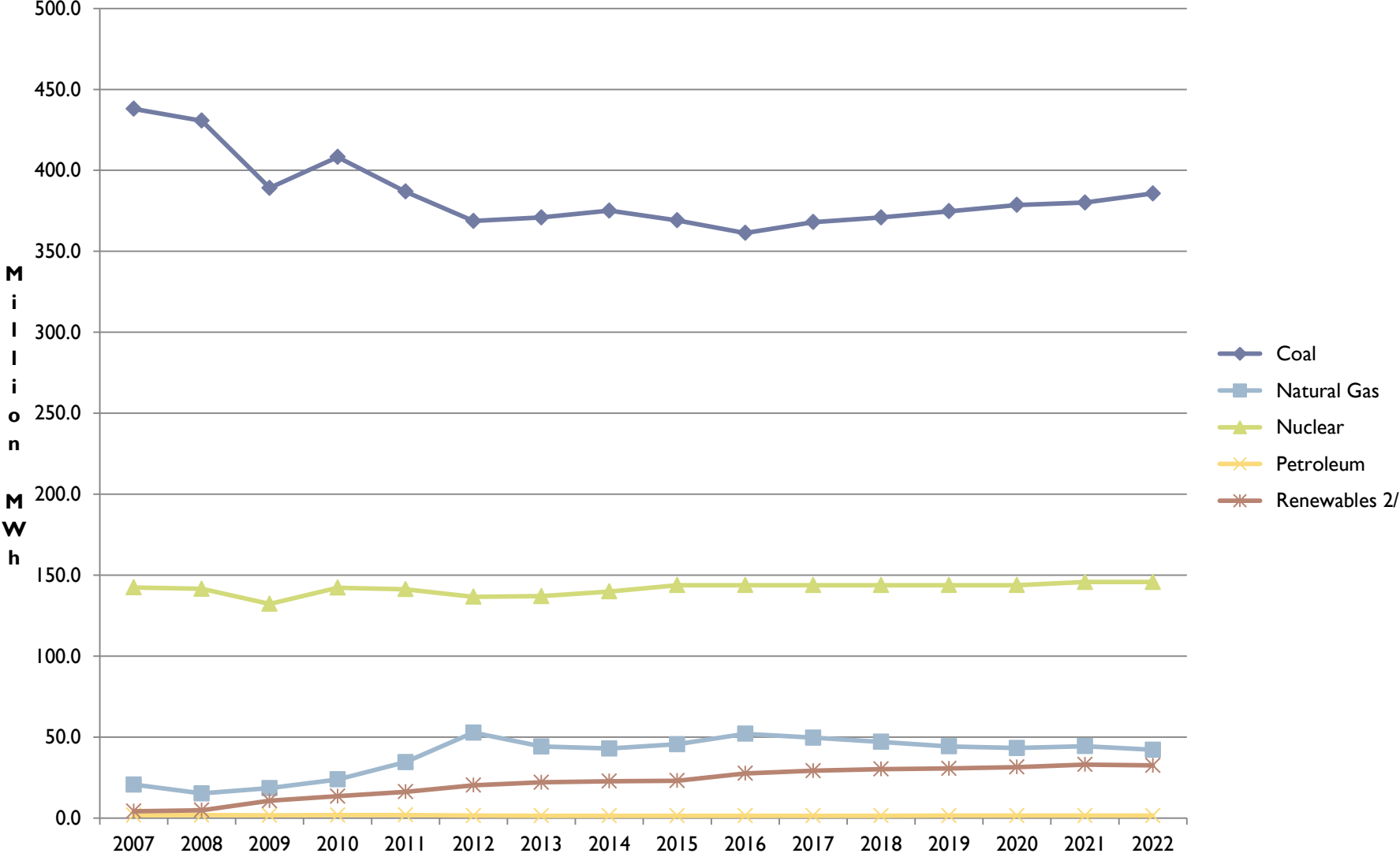
19 – Western Electricity Coordinating Council / Southwest (AZNM)

20 – Western Electricity Coordinating Council / California (CAMX)

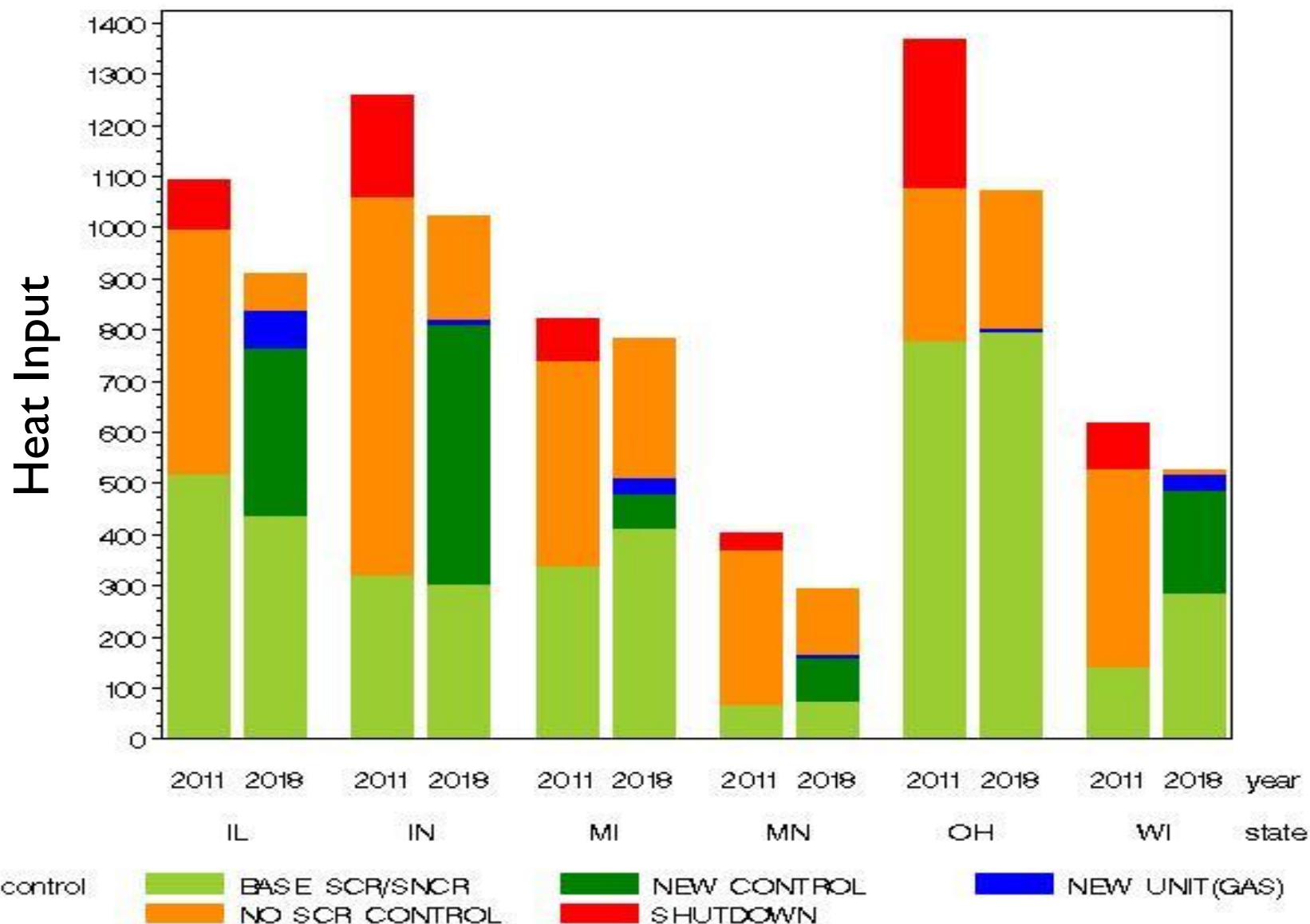
21 – Western Electricity Coordinating Council / Northwest Power Pool Area (NWPP)

22 – Western Electricity Coordinating Council / Rockies (RMPA)

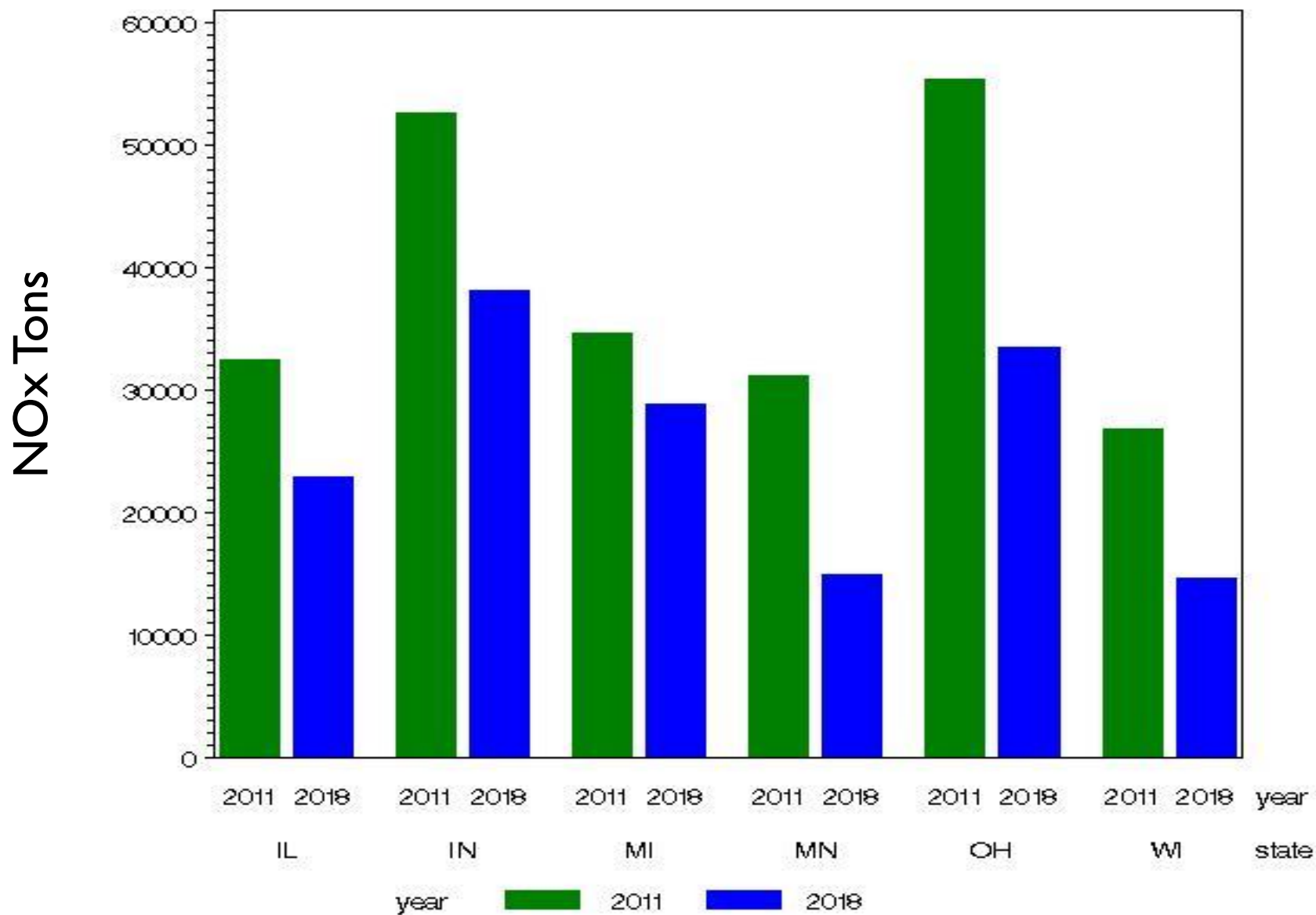
RFCW Region-Specific Trend - Annual Generation



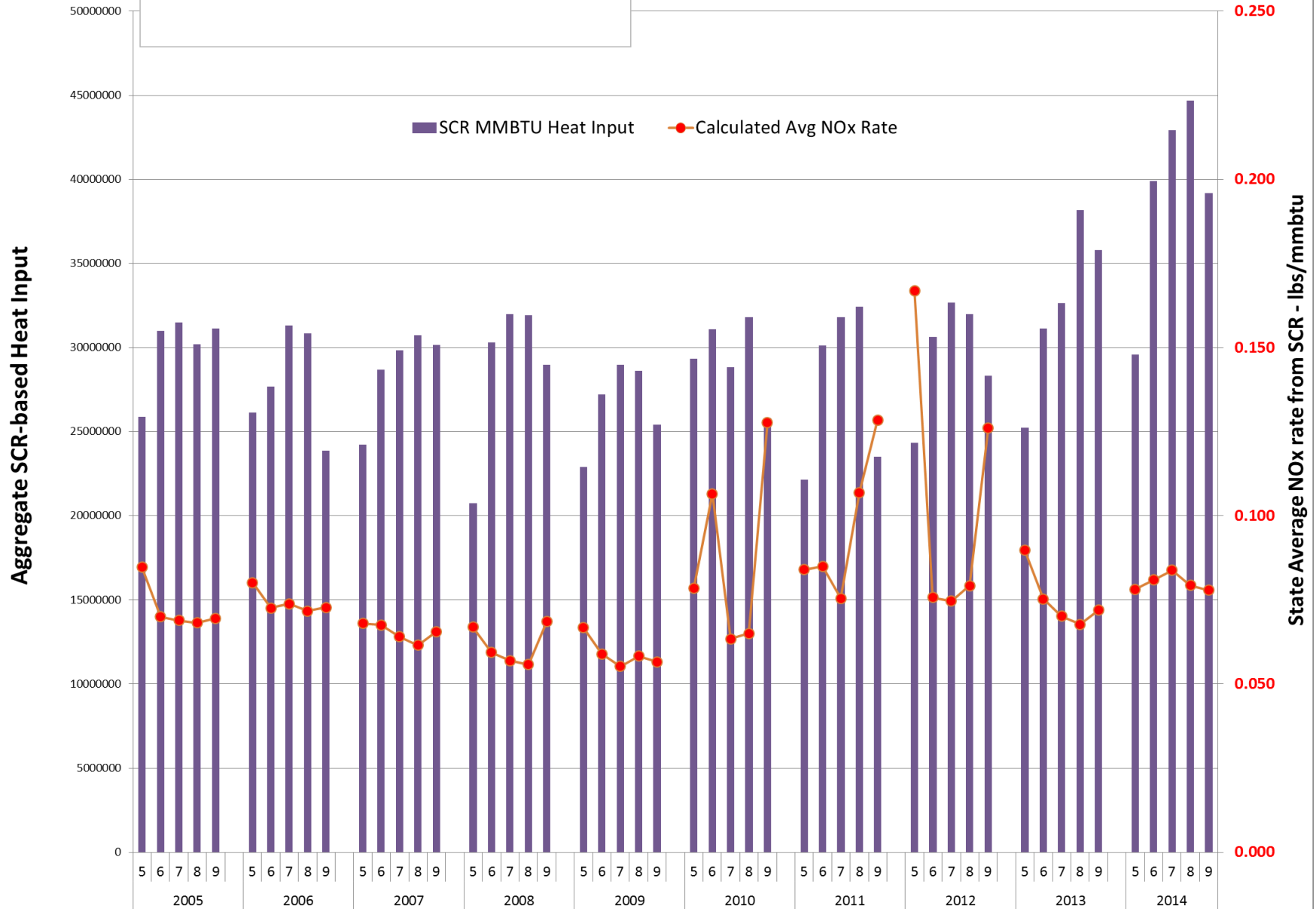
Coal EGU Projection Summary – LADCO States



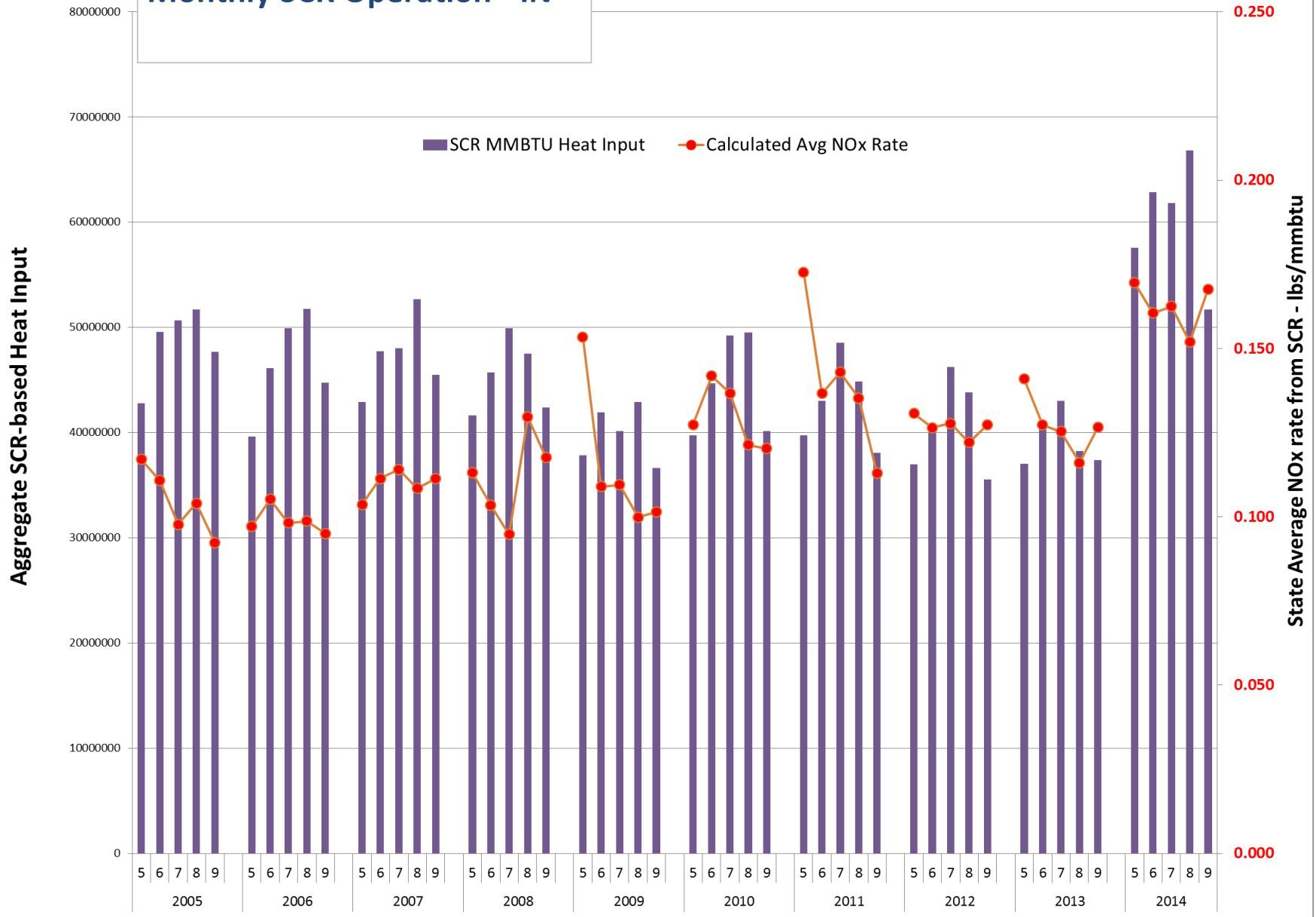
Coal EGU Projection Summary – LADCO States



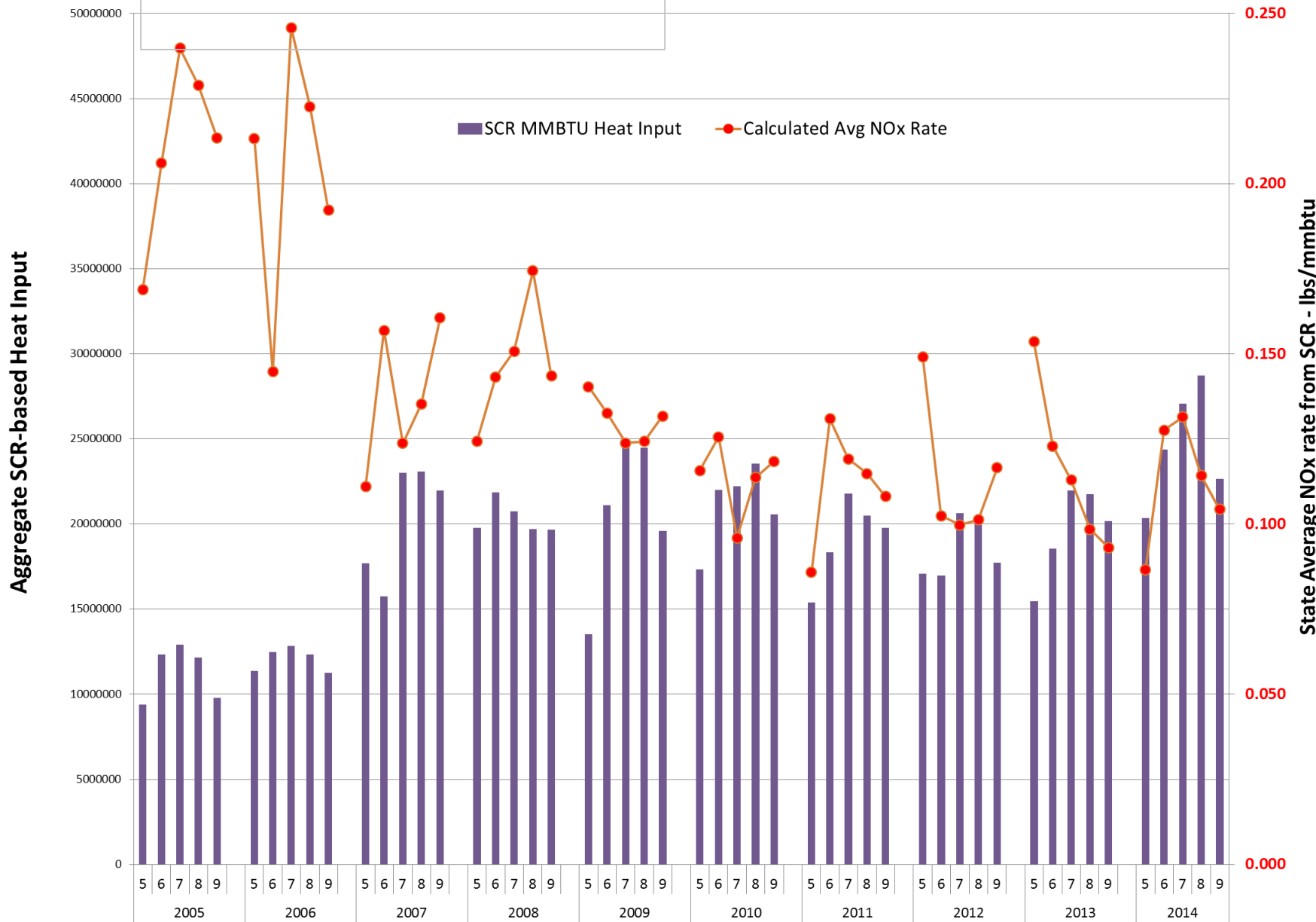
Monthly SCR Operation - IL



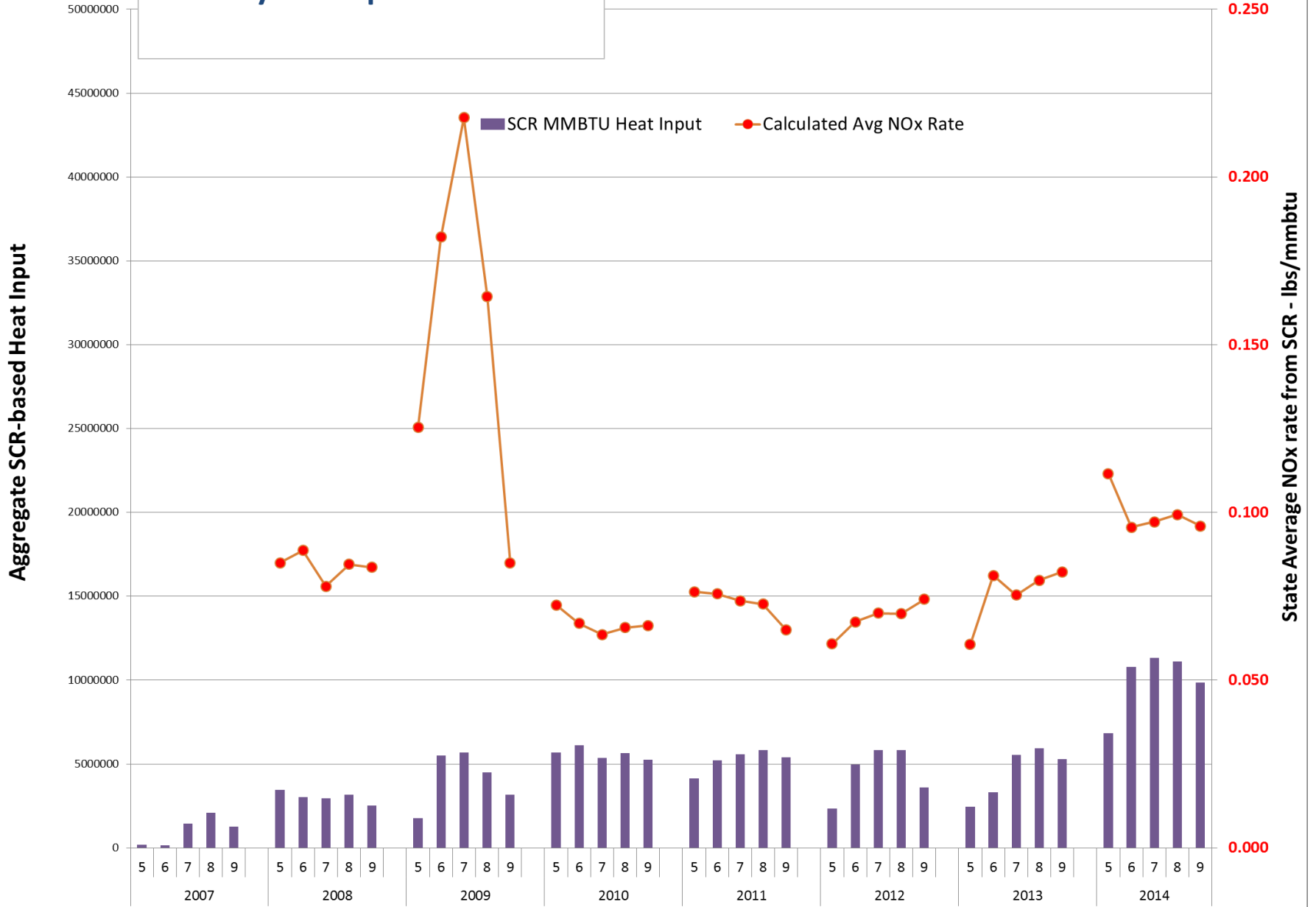
Monthly SCR Operation - IN



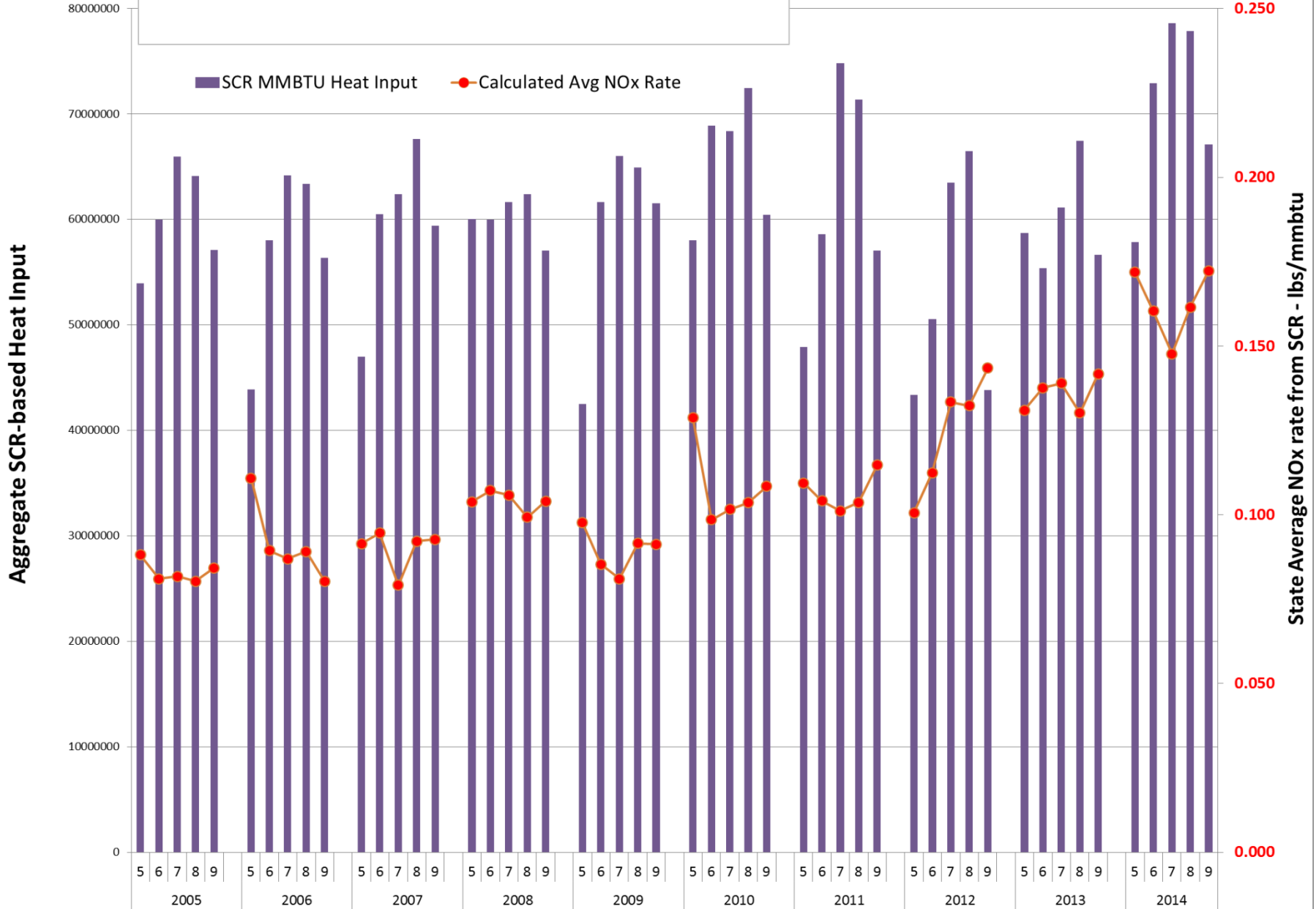
Monthly SCR Operation - MI



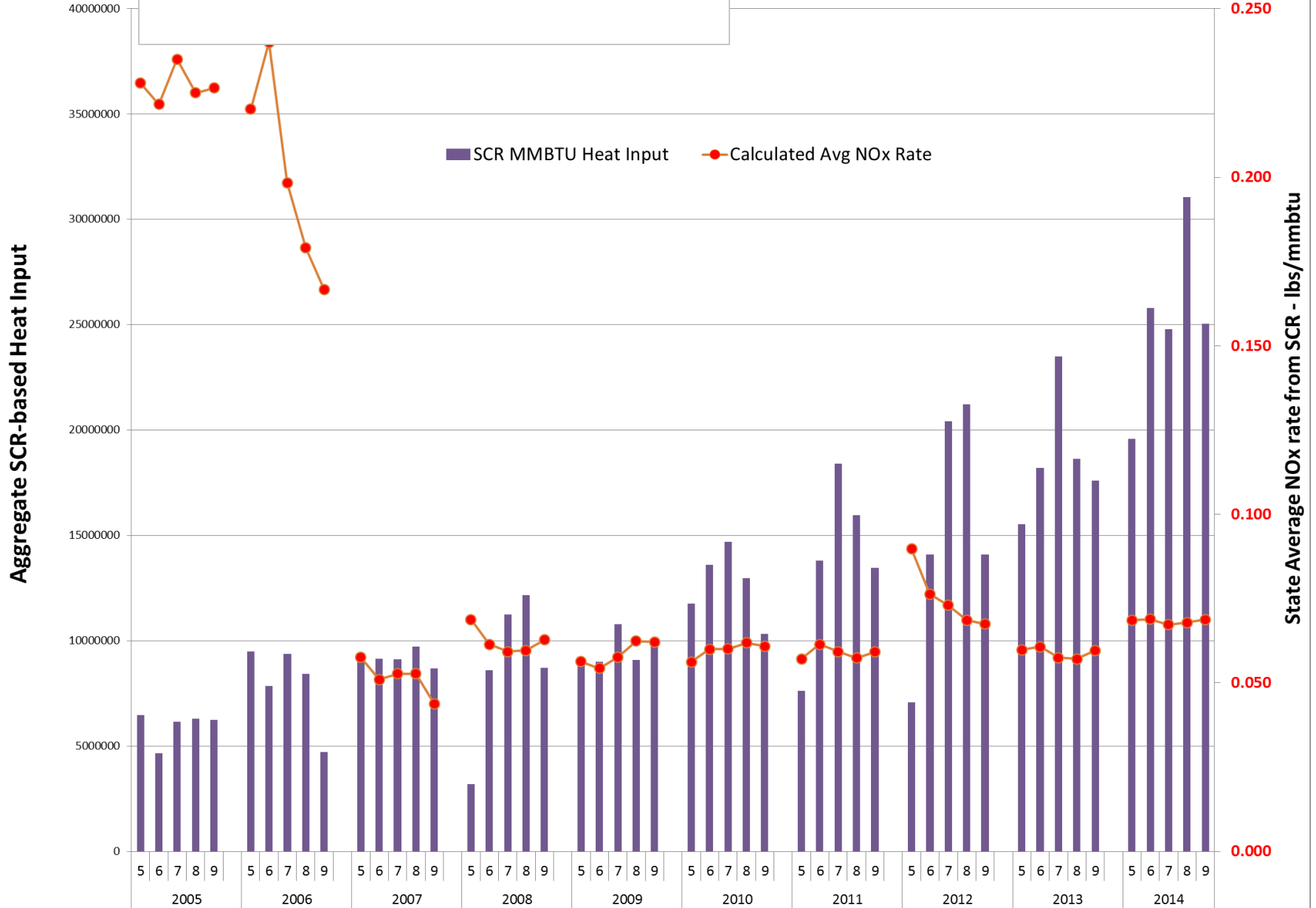
Monthly SCR Operation - MN



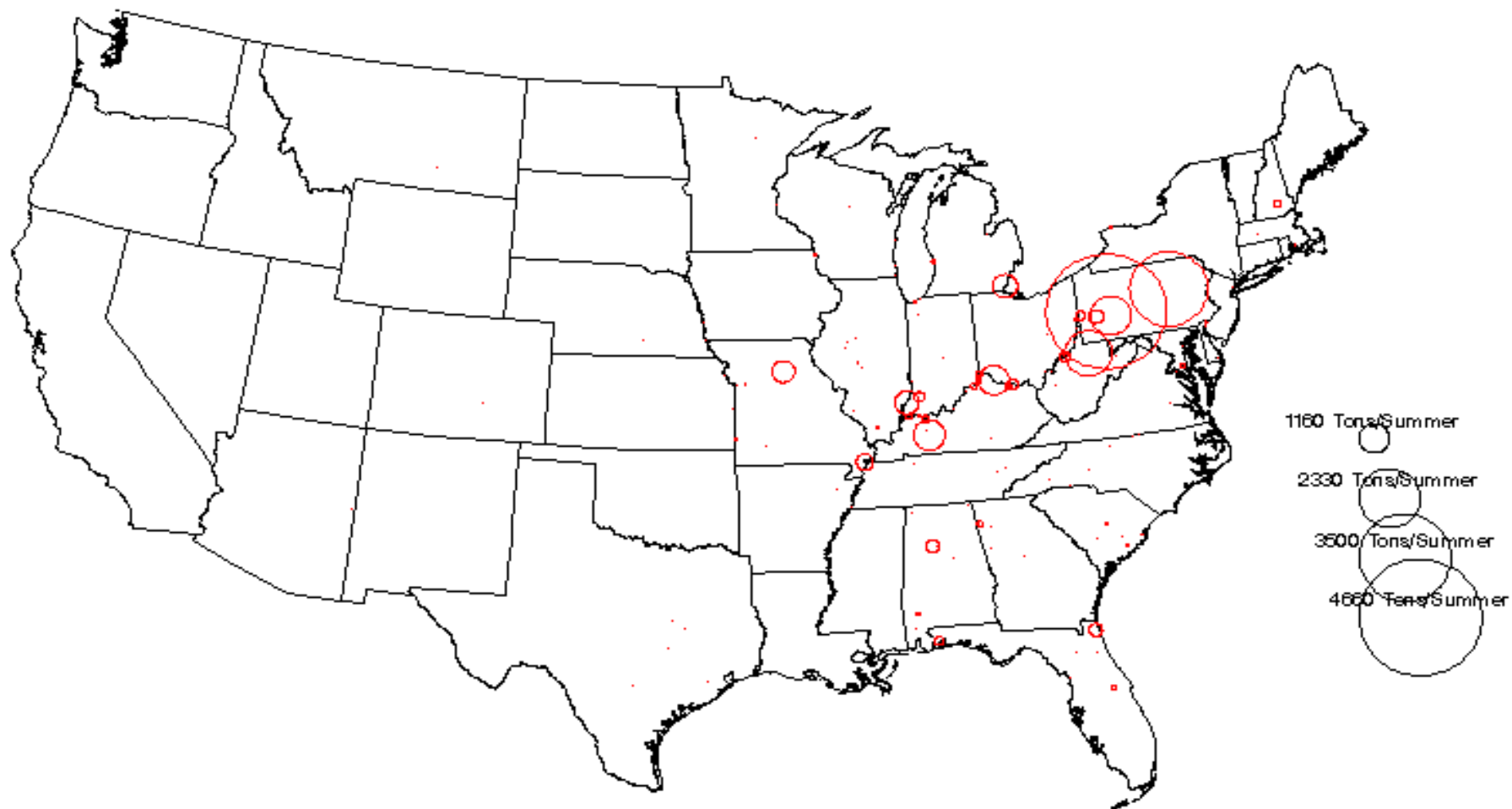
Monthly SCR Operation - OH



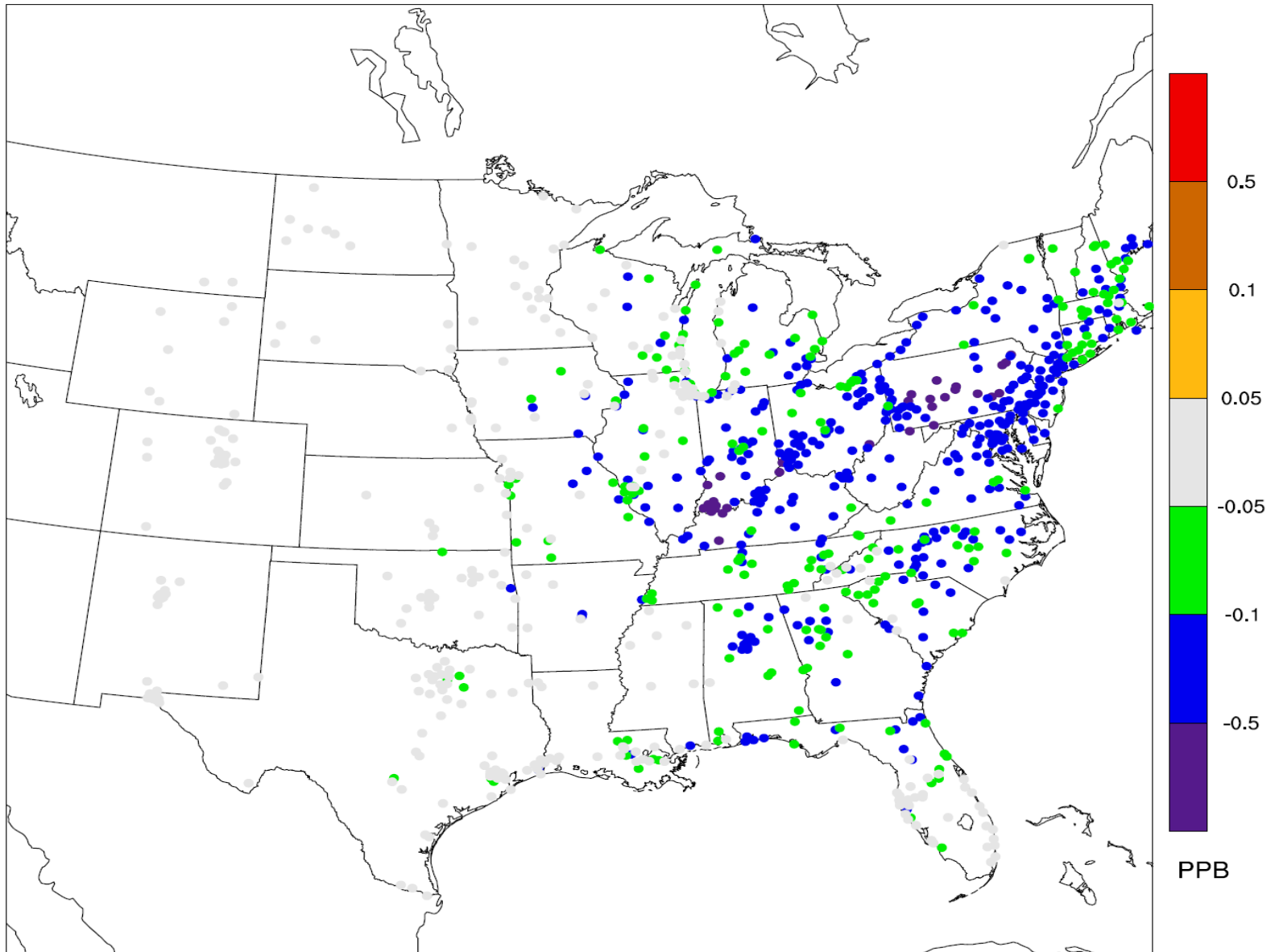
Monthly SCR Operation - WI



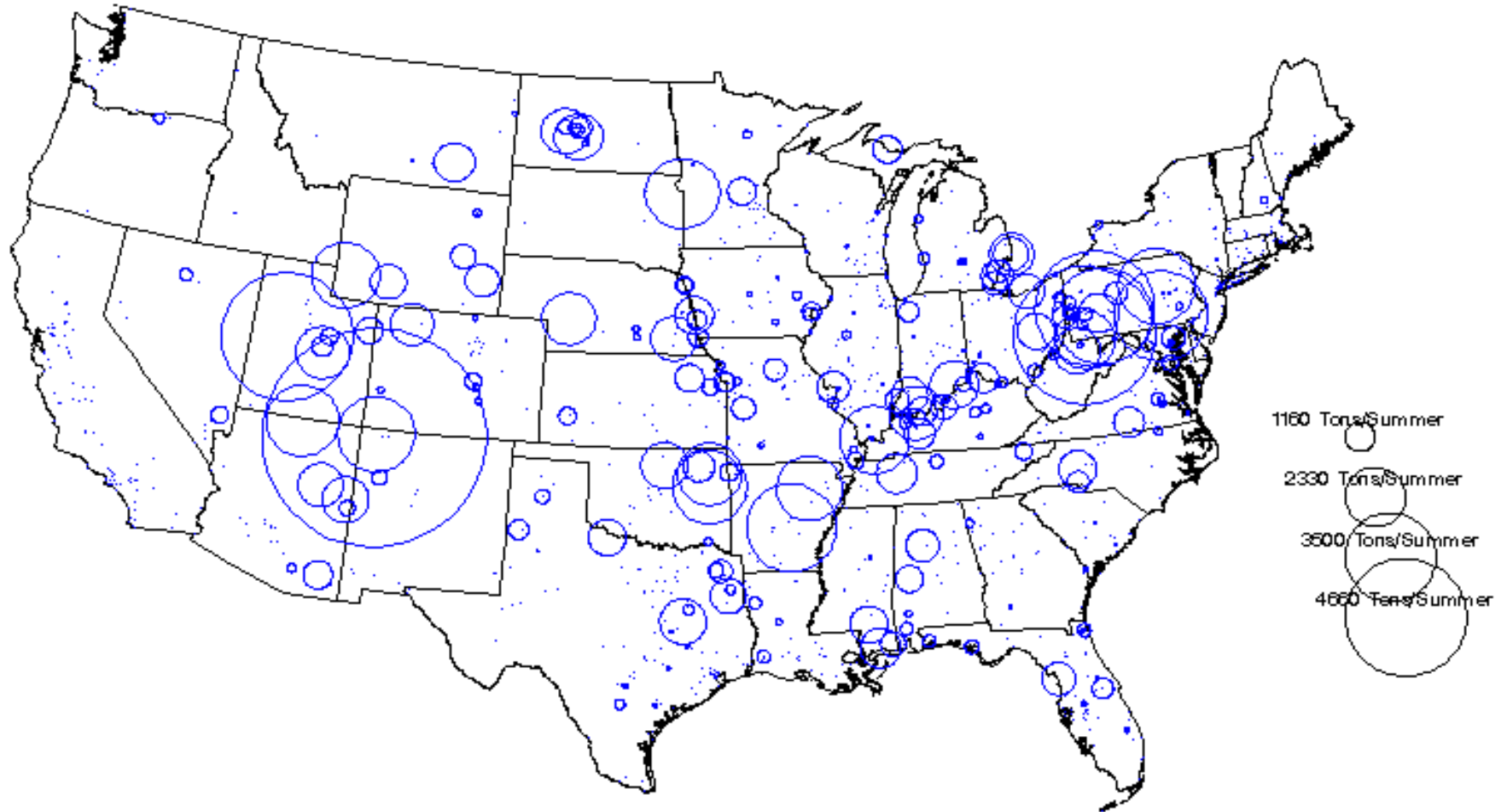
SCR's Exceeding 0.10 lb/mmbtu – ERTAC 2.2 (2011 base projected to 2018)



2018 Ozone Improvement SCR Units @ 0.10 lb/mmbtu NOx Emissions Cap



All EGU's Exceeding 0.10 lb/mmbtu – ERTAC 2.2 (2011 base projected to 2018)



Questions?

Rob Kaleel, LADCO

kaleel@ladco.org

847-720-7880

