

DISTRICT OF CANNABIS

Air Quality Impacts of Cannabis Cultivation within the District of Columbia

Kelly Crawford

Chief, Compliance and Enforcement Branch

Air Quality Division

Department of Energy & Environment

★ ★ ★ DEPARTMENT
OF ENERGY &
ENVIRONMENT



GOVERNMENT OF THE
DISTRICT OF COLUMBIA
MURIEL BOWSER, MAYOR

THE CURRENT STATE OF CANNABIS IN THE DISTRICT

Title 7 Chapter 16B § 7-1671.06

Current code restricts number
marijuana cultivation facilities to 8

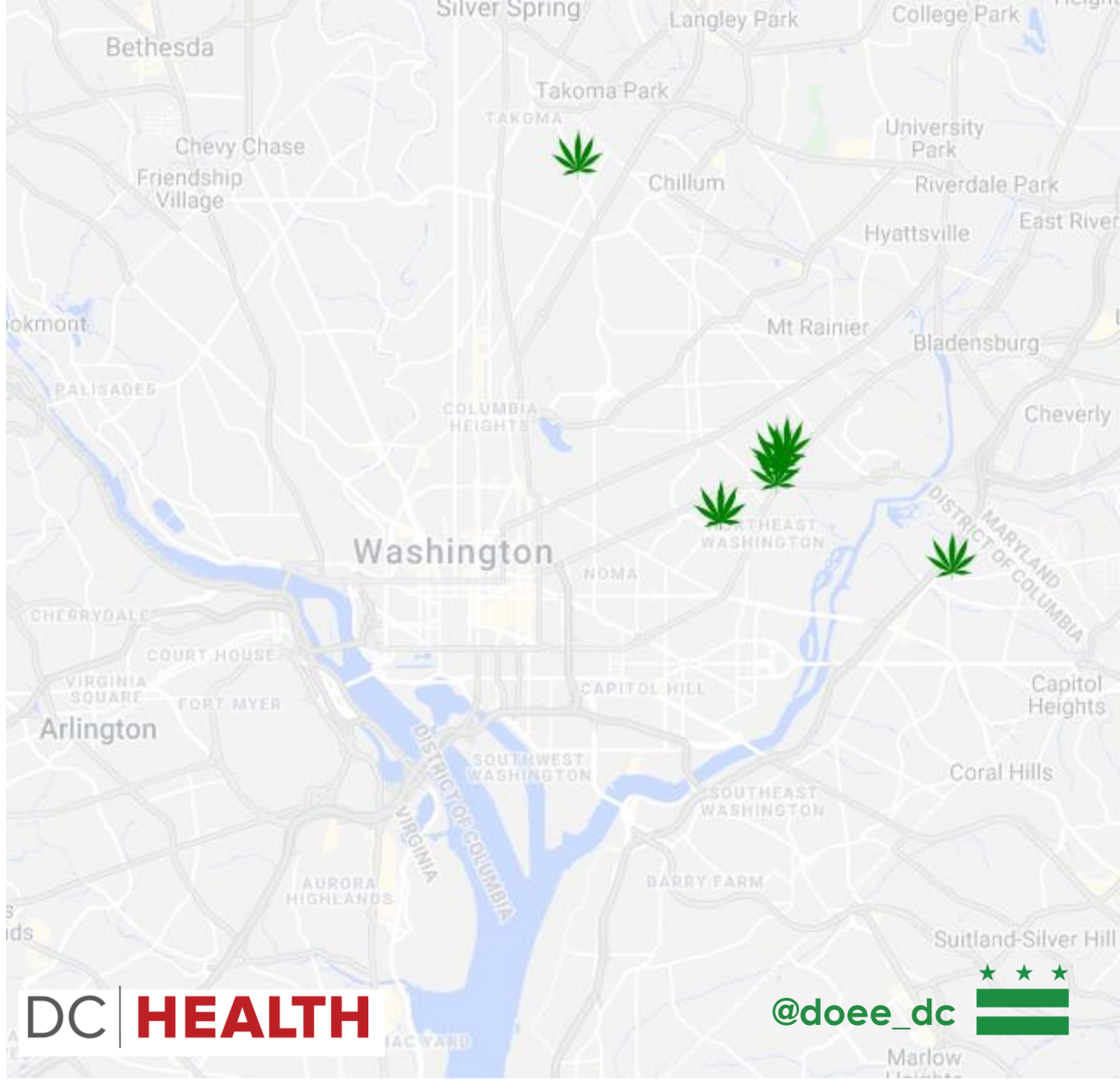
Limits cultivation centers to not
possess more than 1,000 living
marijuana plants at any time

Limits locations where marijuana can
be cultivated, handled or dispensed

A dispensary, cultivation center, or
testing laboratory shall not locate
within any residential district or within
300 feet of a preschool, primary or
secondary school, or recreation
center.

Cultivation Centers

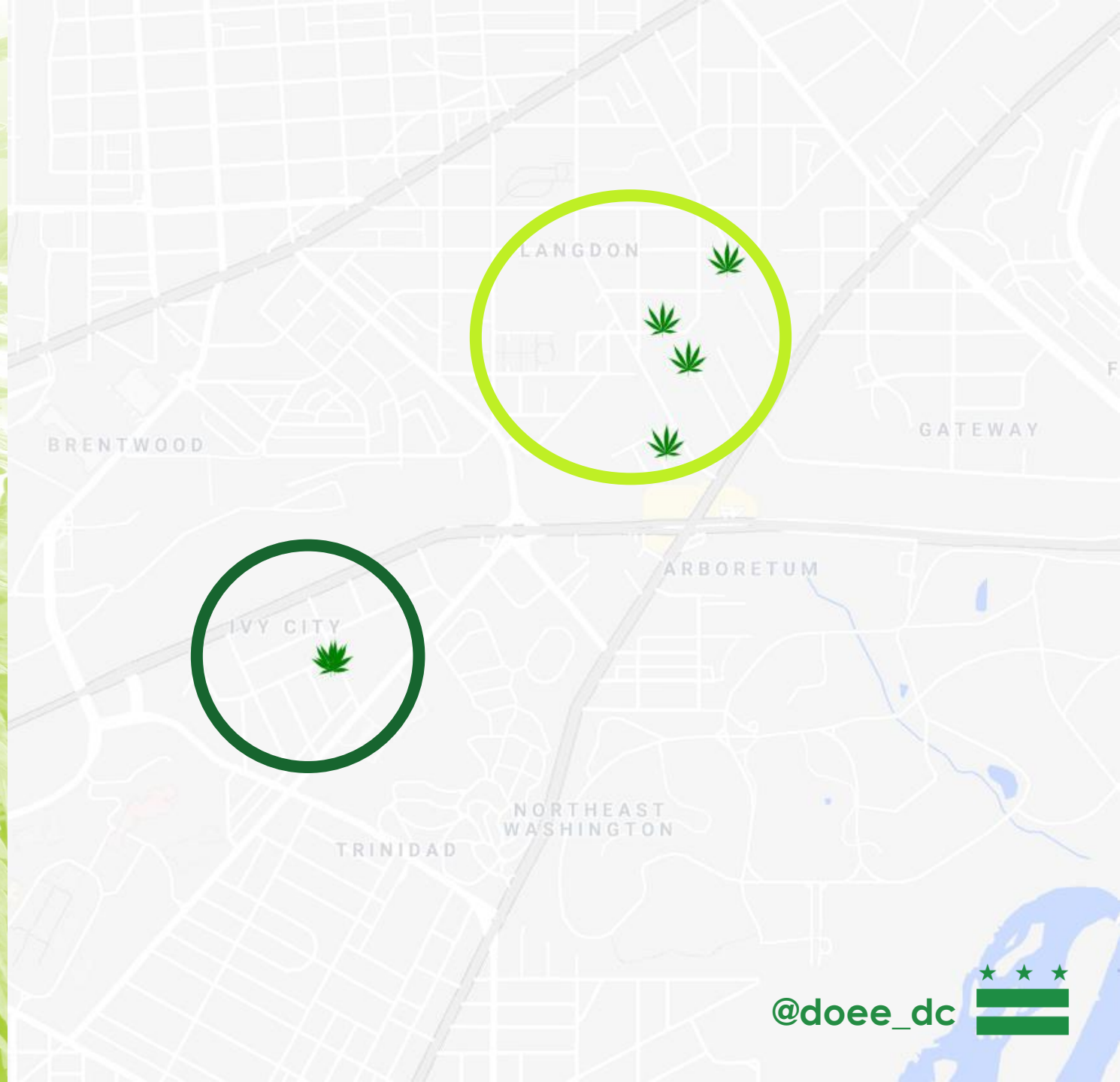
There are a total of eight (8) operational cultivation centers. Cultivation Centers are licensed by DC Health.



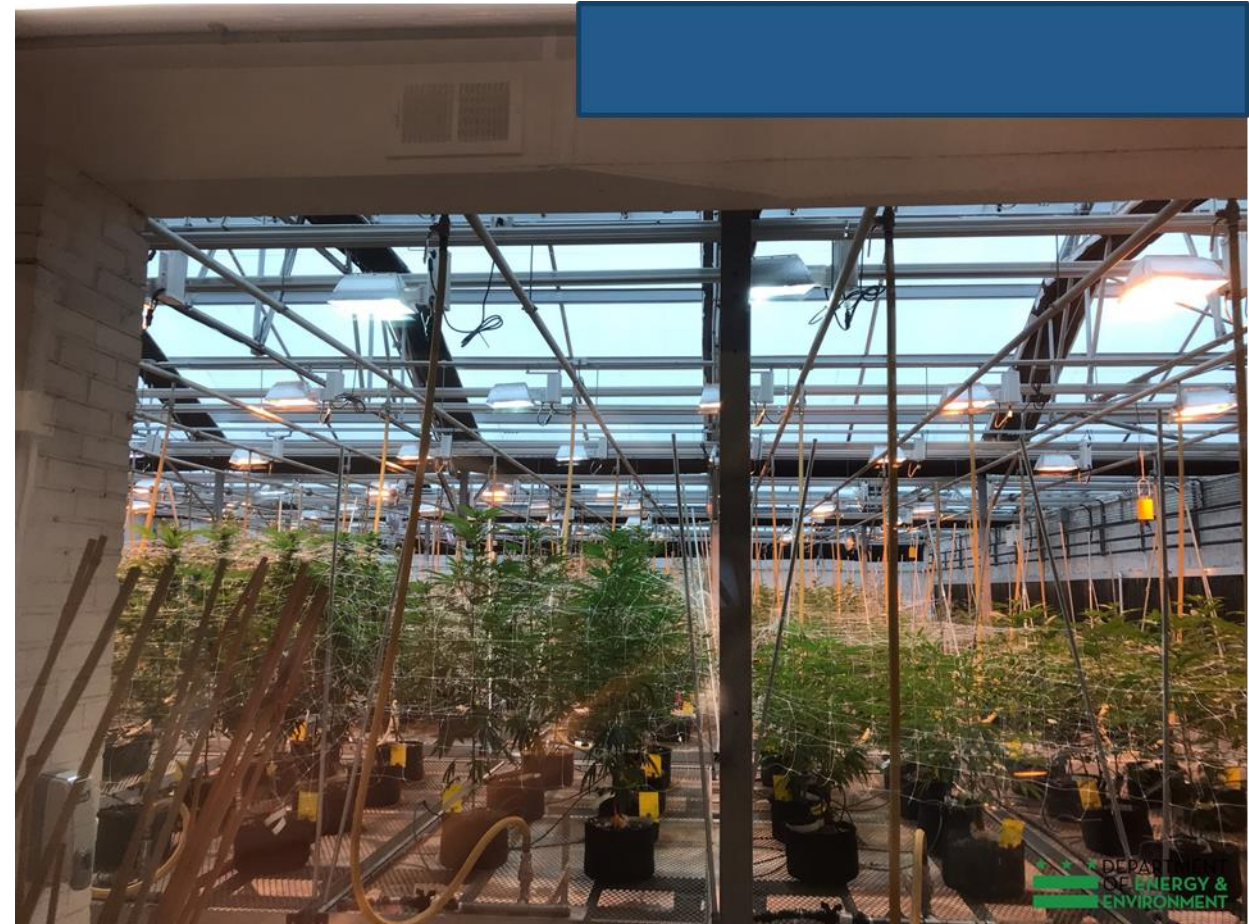
Cultivation Centers Facility Distribution

The majority of cultivation facilities are located in the Langdon and Ivy City neighborhoods in the Northeast quadrant of the city.

There are seven (7) medical marijuana facilities distributed throughout the city.



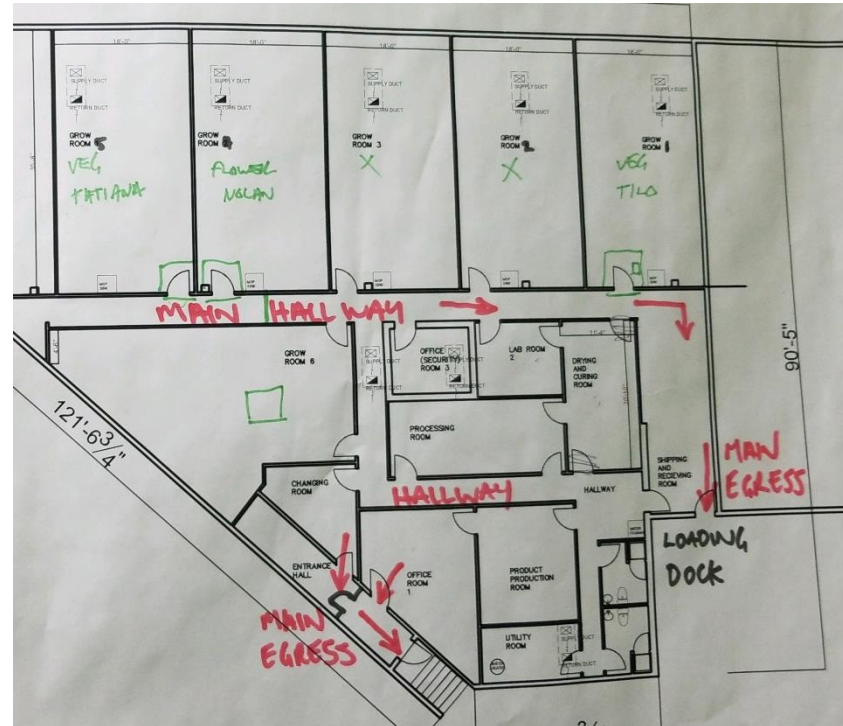
Grow Operations



Anatomy of a Cultivation Center

Indoor yields can range from **1 – 5 oz. per plant** depending on growing conditions.

- Grow Rooms
 - Propagation (Prop)
 - Vegetation (Veg)
 - Flowering (Bloom)
- Processing Rooms
 - Dry Room
 - Cutting Room
 - Extraction



Grow Rooms



Grow Rooms



Processing Rooms



Processing Rooms

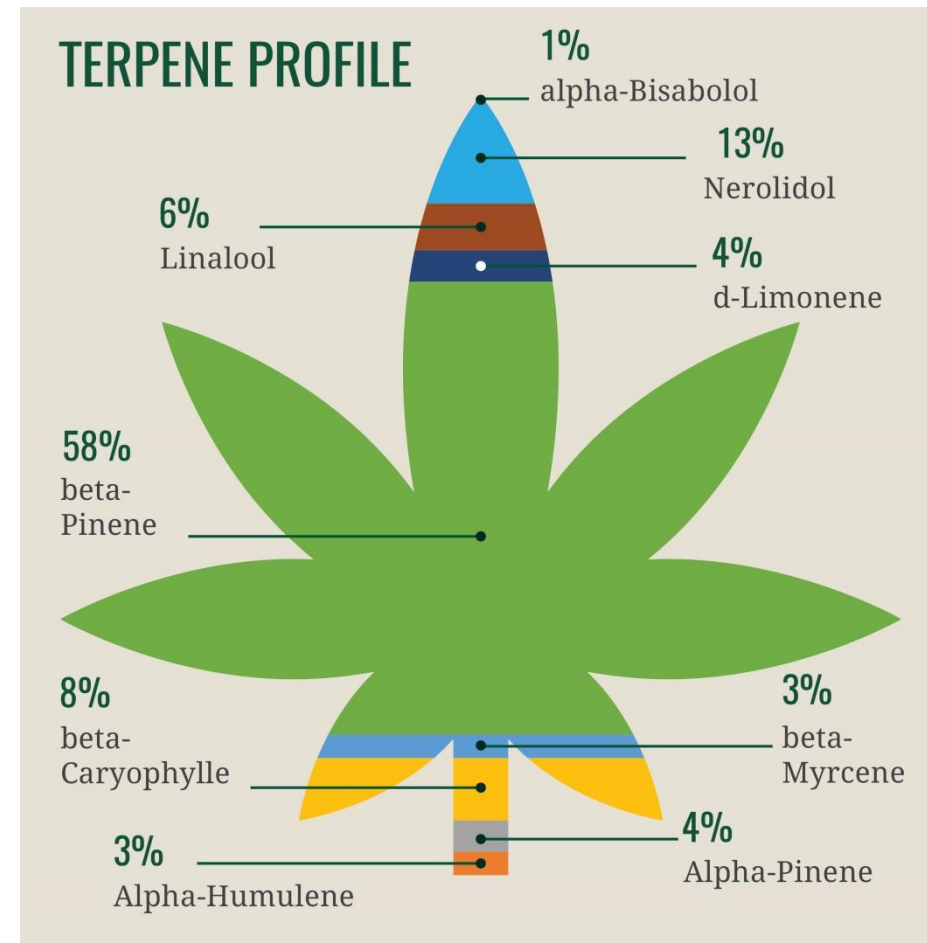


AIR QUALITY IMPLICATIONS

Cannabis cultivation emits terpenes which are VOC's characterized by strong odors.

20 DCMR § 200

- Requires permits for stationary sources of air pollution



WHAT ABOUT ODOR?

20 DCMR § 903.1

An emission into the atmosphere of odorous or other air pollutants from any source in any quantity and of any characteristic, and duration which is, or is likely to be injurious to the public health or welfare, or which interferes with the reasonable enjoyment of life and property is prohibited.



Engineering Controls



Engineering Controls



ON THE CANNABIS HORIZON



Increased Capacity

- 10-fold increase in allowable live plants at existing cultivation centers
- Recreational sale and on premises consumption facilities
- Additional cultivation centers and dispensaries

Questions ?

