



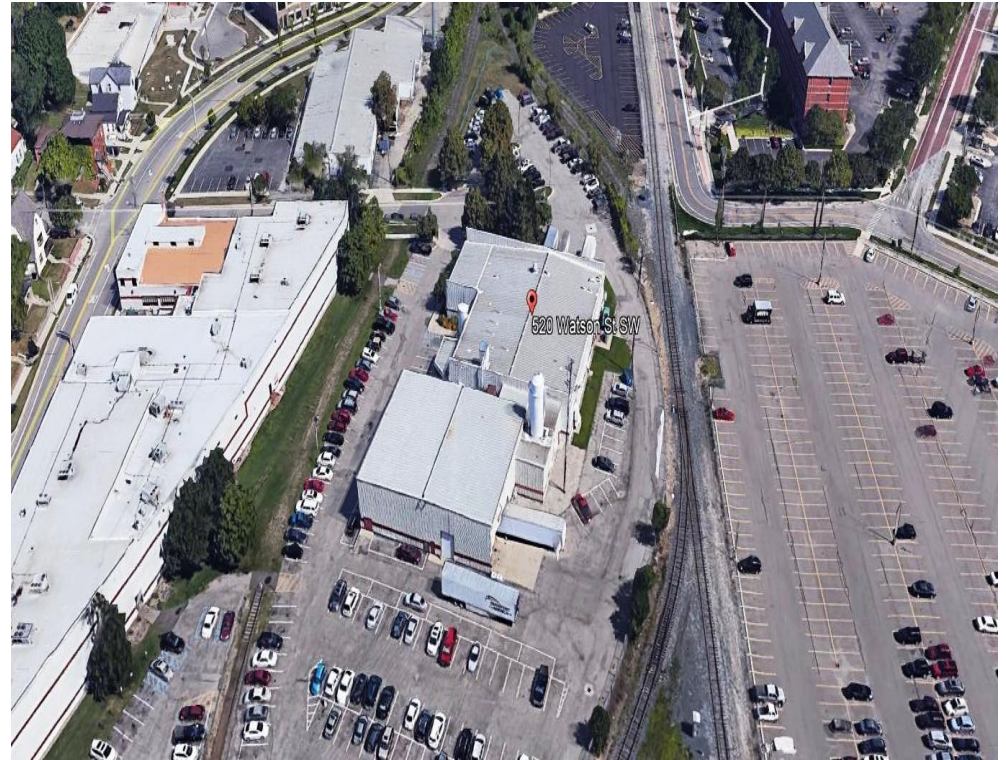
MICHIGAN DEPARTMENT OF
ENVIRONMENT, GREAT LAKES, AND ENERGY

Michigan's Efforts to Address Ethylene Oxide: The Viant Case Study

Chris Ethridge
Air Quality Division
517-582-3063
ethridgec@Michigan.gov

The Facts

- Viant Medical – Largest EtO emitter in Michigan
- Documented non-compliance issues
- Potential health concerns



Michigan/AQD's Approach

- NATA data released in August 2018
- AQD staff conduct a site inspection
- Modelling analysis completed
- Two phases of summa cannister sampling completed



Michigan/AQD's Approach continued

- AQD staff notify the community and host a public information meeting in March 2019
- Public outreach resources including a website are created
www.Michigan.gov/viant
- Coordination with local and county health officials



Ongoing Efforts

- Viant escalated enforcement action and public hearing
- Investigation of additional EtO emitting sources
- Additional interactions with interested media and community representatives



OPEN HOUSE, INFORMATION MEETING and PUBLIC HEARING

About Viant Medical, Inc., Kent County, Michigan

October 23, 2019, 5:30P.M. – 9:00 P.M.

Grand Valley State University Eberhard Center

301 Fulton W, Grand Rapids, Michigan

The Michigan Department of Environment, Great Lakes and Energy (EGLE) will host an open house, information meeting, and public hearing on the DRAFT Consent Order for the Viant Medical Facility located at 520 Watson Street SW, Grand Rapids, Michigan. The Kent County Health Department (KCHD) and the Michigan Department of Health and Human Services (MDHHS), and the United States Environmental Protection Agency (USEPA) will also participate in the evening's activities.

Due to Viant's numerous air quality violations related to ethylene oxide, an enforcement case is in process. Part of this process is Viant and EGLE entering into a legally binding enforcement agreement which includes a DRAFT Consent Order. The public is invited to make comments on the record related to this drafted agreement.



Viant Medical Facility

USEPA has classified ethylene oxide as a "known human carcinogen". Studies of people that work with ethylene oxide show an increased risk of breast cancer and blood cancers (including multiple myeloma, leukemia, and non-Hodgkin's lymphoma).

AGENDA

- 5:30 P.M.** Open House – The community is invited to meet one-on one with staff from EGLE, KCHD, and the MDHHS. Questions and conversation with staff are welcome.
- 6:00 P.M.** Presentation – Learn the background of the facility, what has been done, as well as what USEPA is doing nationwide. An update on the enforcement case will also be presented
- 6:30 P.M.** Informational Session – The community is invited to ask questions of a panel of representatives from EGLE, MDHHS and USEPA.
- 7:30 P.M.** Public Hearing – EGLE staff will take comments on the DRAFT Consent Order for the record. This is not an interactive session.

Questions
