A composite image showing a blue surgical mask superimposed over a view of the Earth from space. The mask covers the lower half of the globe, symbolizing the connection between air quality, climate change, and public health.

The Clean Air Act, Climate Change and COVID-19

Dr. Adrienne Hollis
Senior Climate Justice and Health Scientist

**[Union of
Concerned Scientists**

The Clean Air Act

- **Air Pollution**
 - CO
 - NAAQS
 - Particulate Matter Pollution
 - Automobile Emissions
- **Acid Rain and Regional Haze**
- **Toxic Air Emissions**
 - Industrial and other stationary sources
 - Mercury and Air Toxics Standards
- **Ozone Layer Protection**
 - Protecting the Ozone Layer







PORT ARTHUR, TEXAS



JOSH EDELSON | AFP VIA GETTY IMAGES



VALERO
REFINING & CHEMICALS L.P.
CIMA
STATION

CENTRAL 400

VALERO
REFINING & CHEMICALS L.P.
PROHIBITED
FROM
ENTERING
WITHOUT
PROPER
AUTHORITY

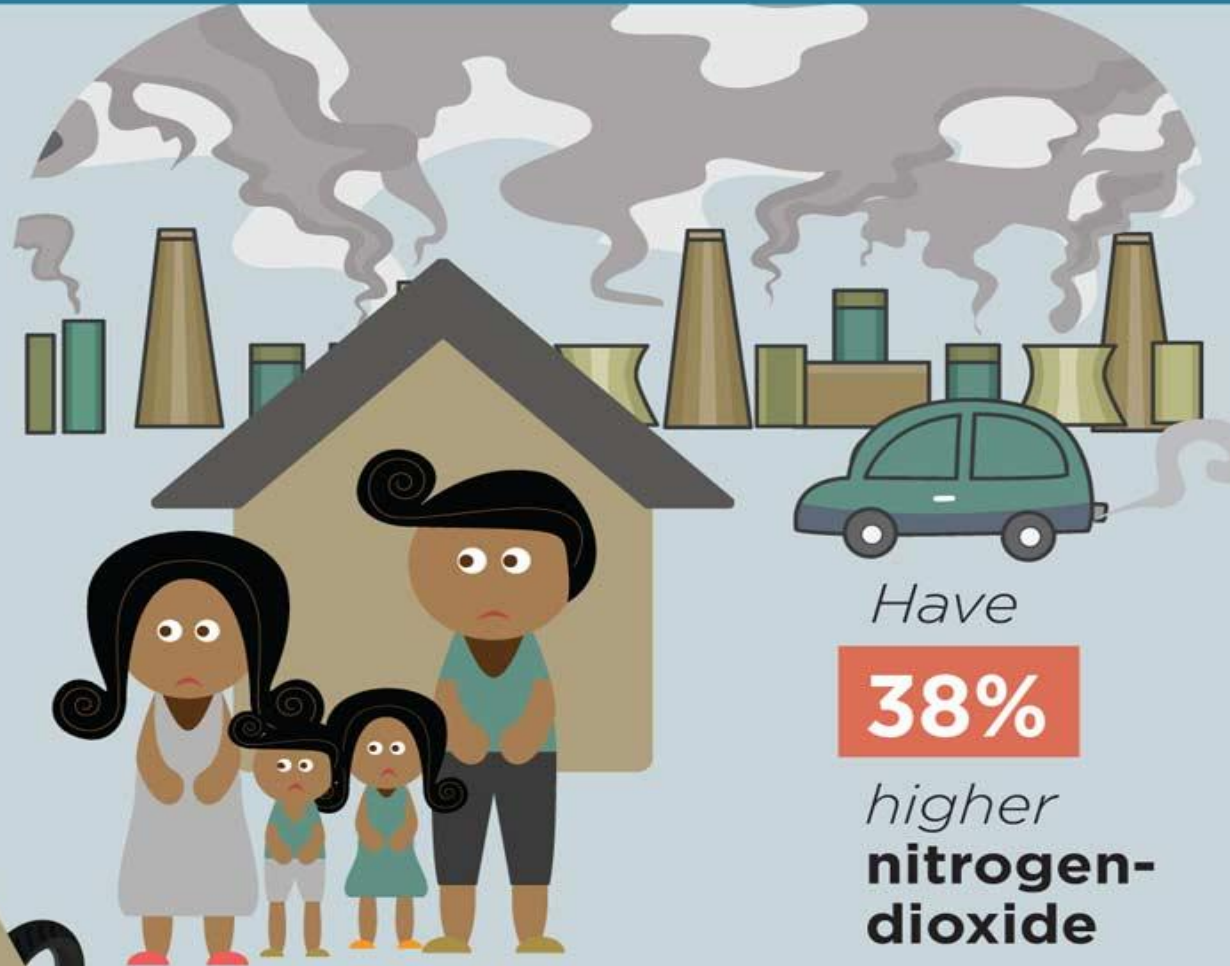


Environmental Racism Is Nothing New

Race is the most significant predictor of a person living near contaminated air, water, or soil.

56%

*of the population near **toxic waste** sites are people of color.*



People of color:

Have seen

95%

*of their claims against polluters **denied by the EPA.***

Have

38%

*higher **nitrogen-dioxide** exposure.*

Are

2x

*more likely to live without **potable water** and **modern sanitation.***

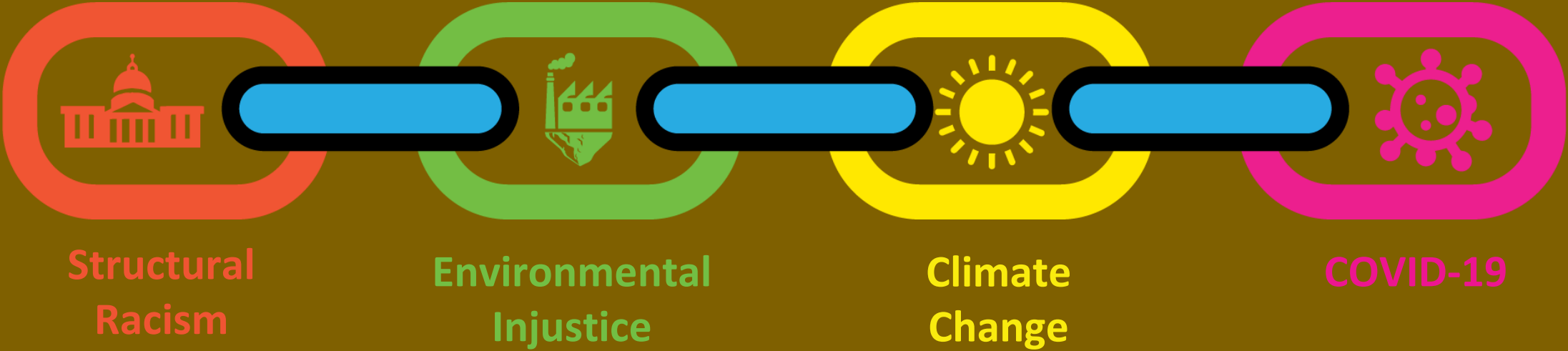








Syndemic



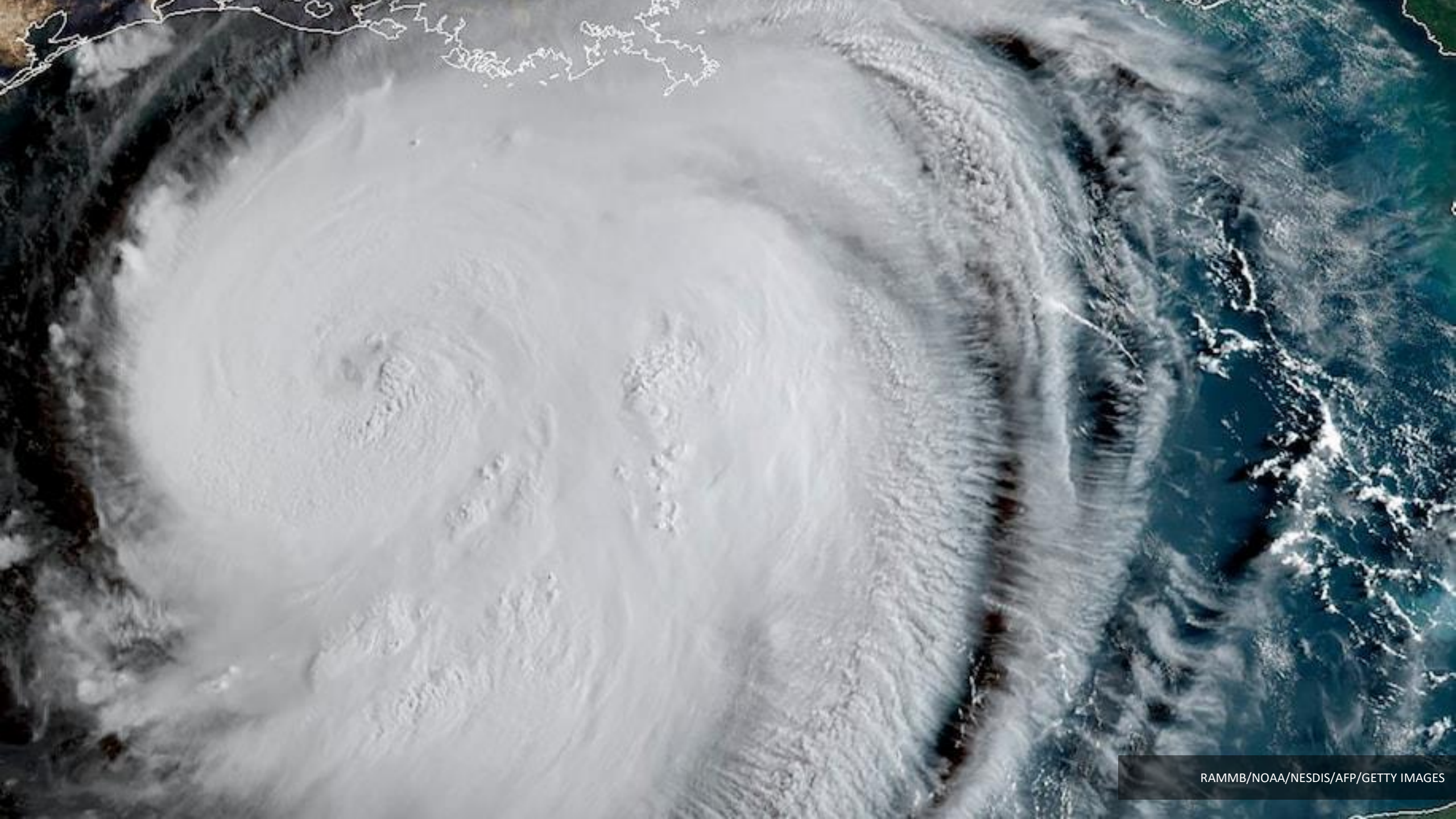


CLIMATE
CHANGE

COVID-19

ENVIRONMENTAL
INJUSTICE

RACISM





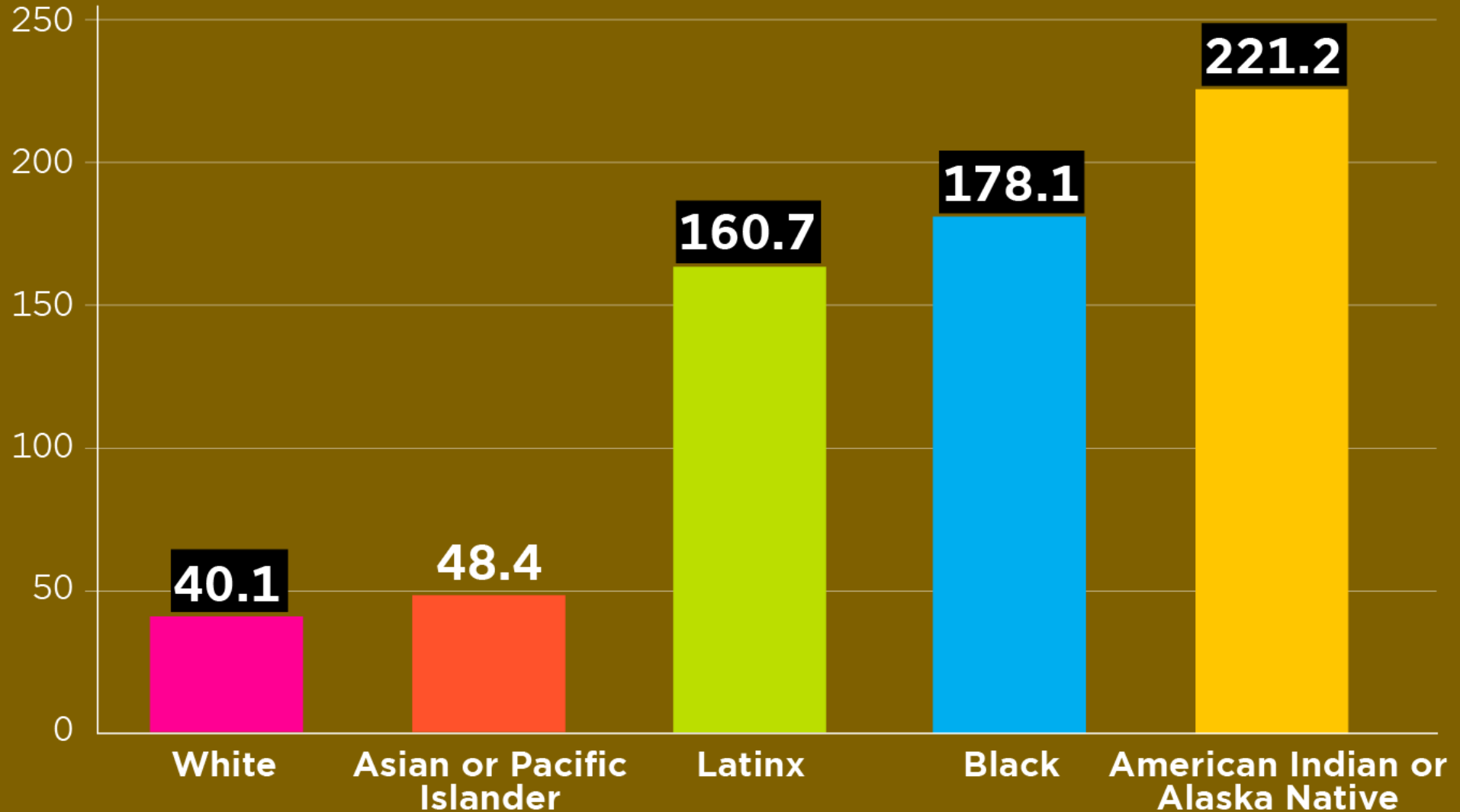
ANDREW CABALLERO-REYNOLDS/AFP VIA GETTY IMAGES



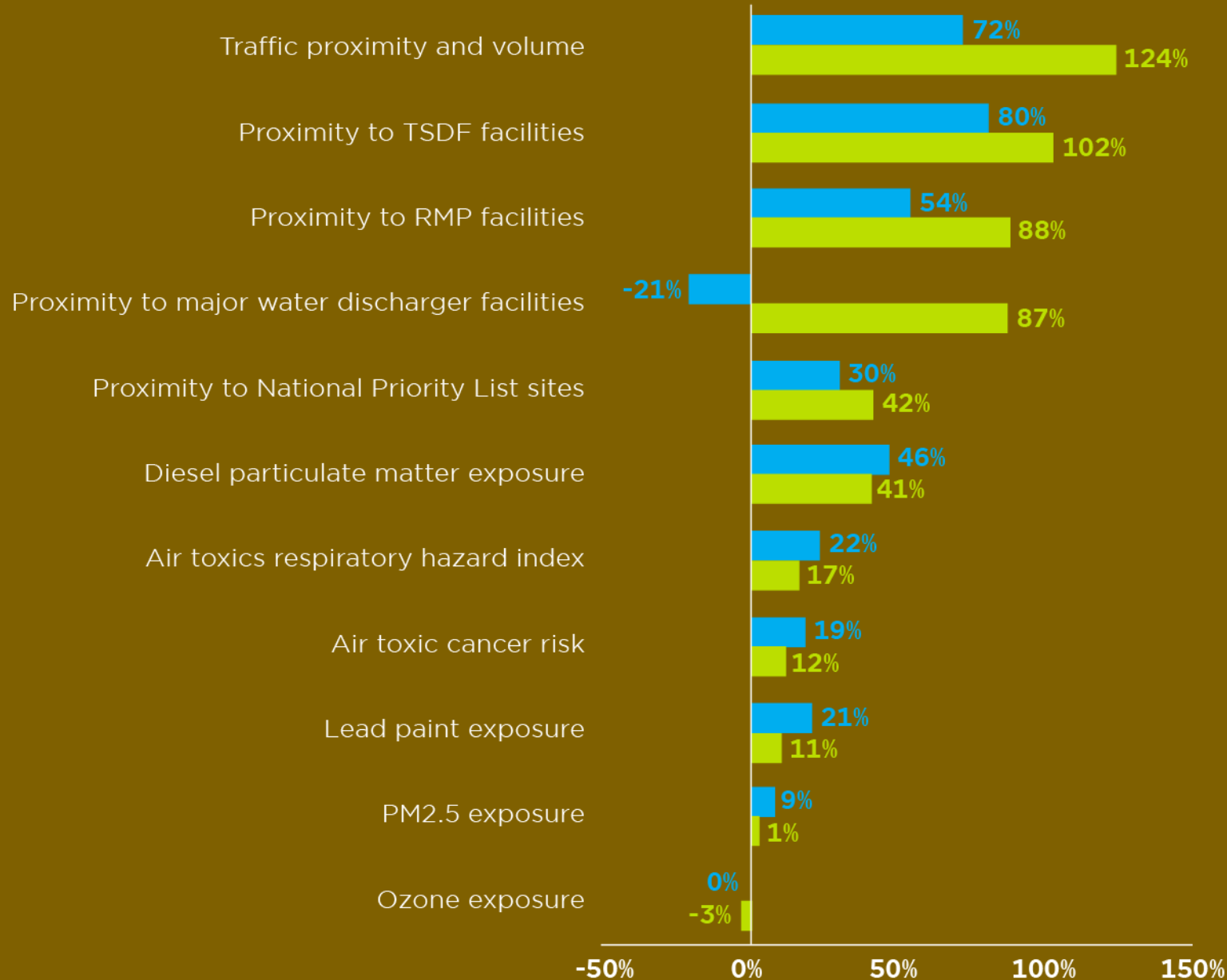


COVID-19 Hospitalization Rates

Rate per 100,000, age-adjusted, March-June 13, 2020



Difference in Environmental Risk Exposure Compared to White Americans *Percent, 2019*



Clean Air Act, Generally

- NAAQS
- Criteria Air Pollutants
- Hazardous Air Pollutants
- Emissions Estimating Methodologies for Animal Ag.
- Community Input
 - Administrative Procedures Act





{ Thank You

Want to Contact Me?

ahollis#@ucsusa.org

[Union of
Concerned Scientists

