



Addressing inequities in air

Frank Kohlasch | Climate Director &

Helen Waquiu | Director of Public Engagement & Tribal Liaison

October 21, 2020

Minnesota ~~Nice~~ Facts

- Median income for black families in the Twin Cities is **LESS THAN HALF** of median income for white families
- Twin Cities has second worst income inequality for urban areas
- Minnesota as a state has the second biggest income equality
- Black unemployment rate has been 2-3X that of white unemployment
- Black poverty rate in Twin Cities is **FOUR TIMES** the white poverty rate



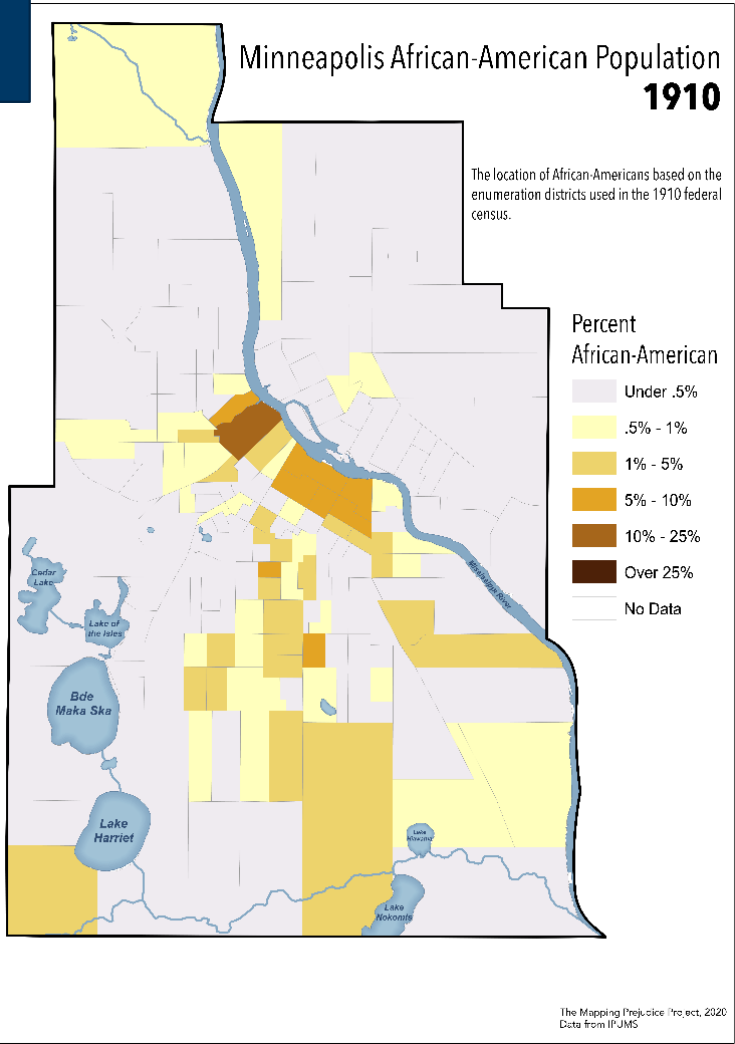
Minnesota ~~Nice~~ Facts

- Incarceration rate of blacks in Twin Cities is 11 TIMES that of whites
- Minnesota is ranked 50th in racial disparities for high school graduation rates
- Black or Native American infants has twice the chance of dying in the first year of life compared to a white baby
- 25% of black families own homes while 75% of white families own homes

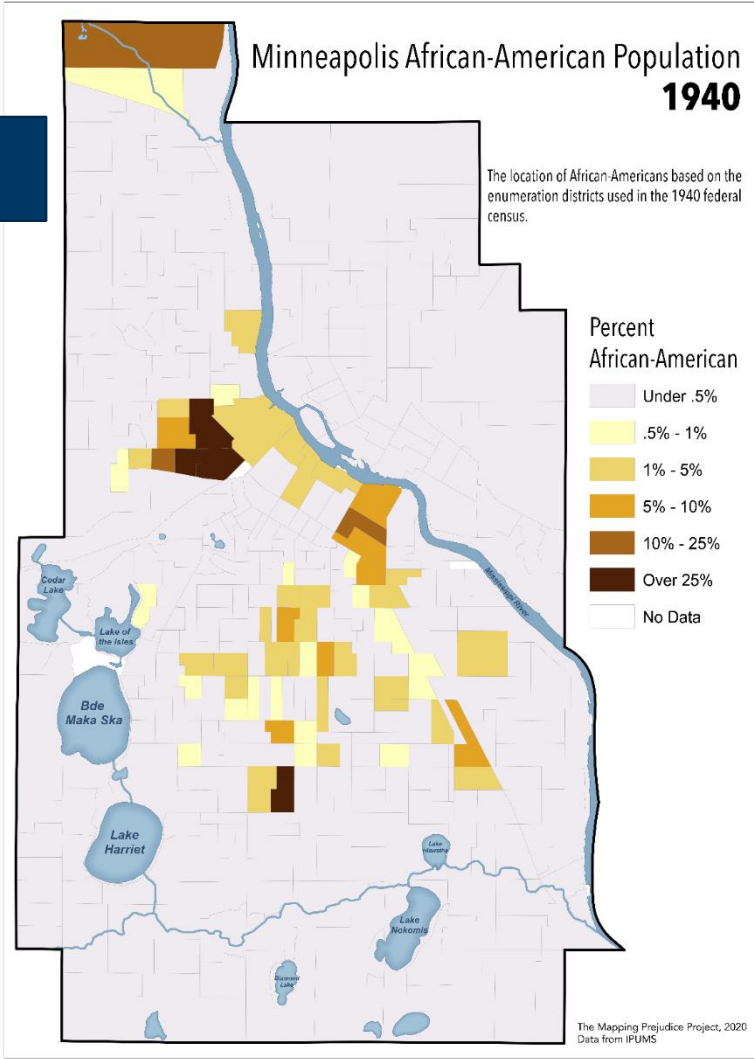


Racial Covenants in Minneapolis

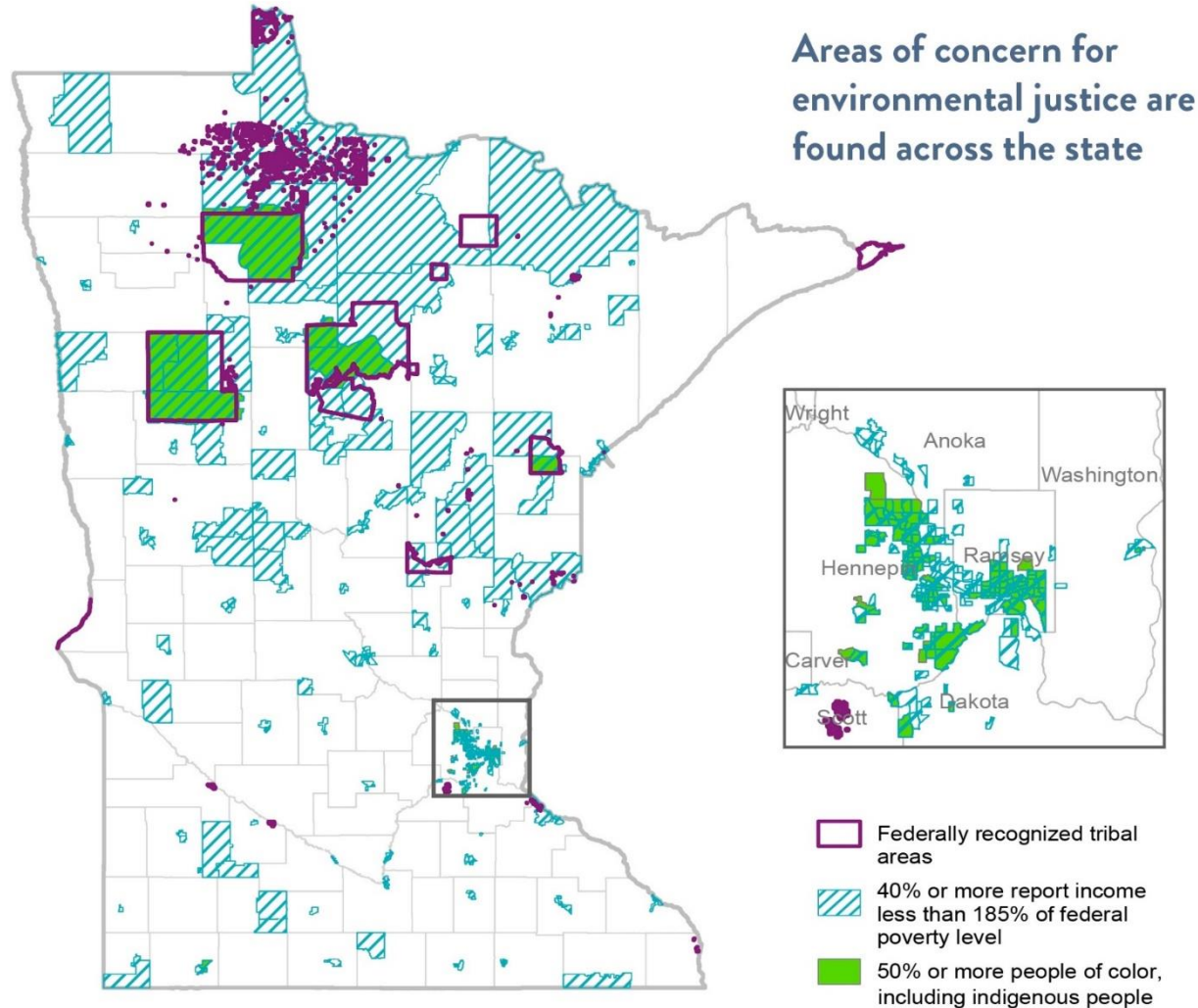
Before



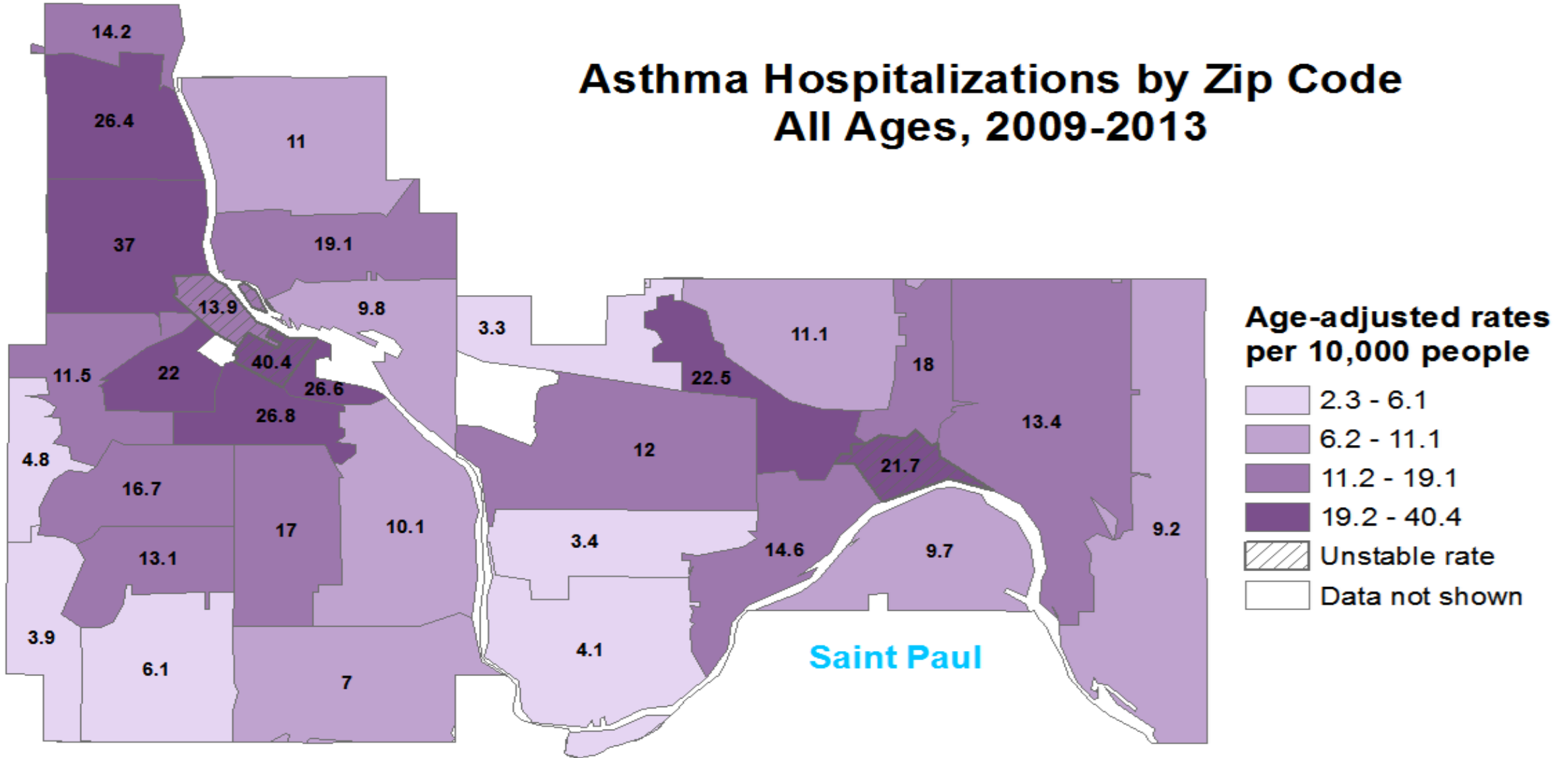
After



Environmental Justice Mapping



Asthma Hospitalizations by Zip Code All Ages, 2009-2013



“Environmental justice” means the right of communities of color, Indigenous communities, and low-income communities, to the enjoyment of a healthy environment and to fair treatment with respect to the development, adoption, implementation, and enforcement of environmental laws, regulations, and policies.

- Identify areas where Minnesotans may be experiencing more harm
- Better understand sources of pollution and risks
- Prioritize and track progress for emission reductions in Environmental Justice areas
- Reduce pollution, improve livability
- Communicate early, often, and better
- Incorporate environmental justice policies in agency strategic plan and framework



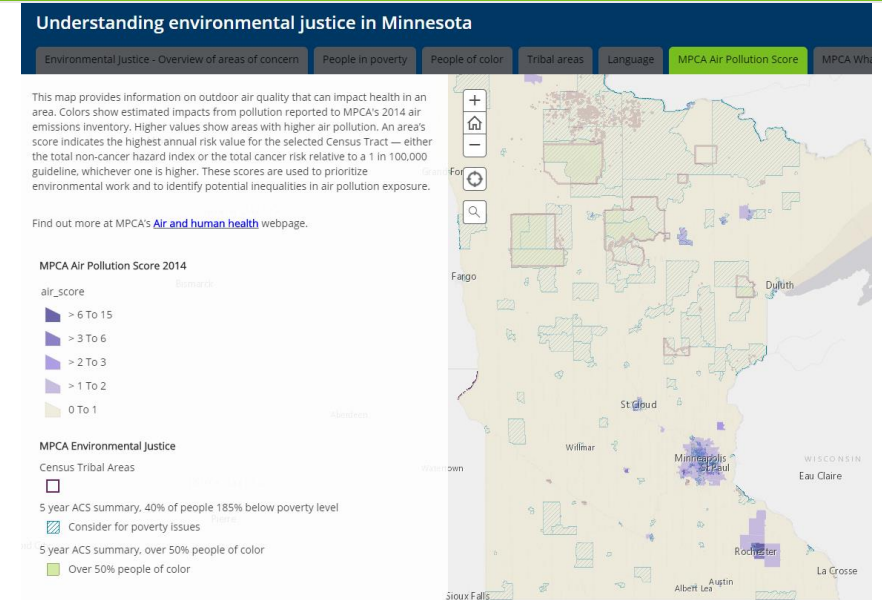
Air permitting strategies

- Inform and involve public early and often in permitting process
- Develop outreach approaches appropriate for the real or perceived risk posed by the facility
- Identify ways to reduce risk and improve quality of life
- Encourage facilities to be engaged with their neighbors, even outside of permit action



Air assessment strategies

- Working with Tribal Nations to monitor air on Tribal land and include their monitors in Minnesota's Air Quality Index reporting and forecasting
- Highlighting air monitoring, emissions and modeling data for environment justice areas
- Prioritizing and tracking progress for emission reductions in environmental justice areas



Total air quality

Some communities are more likely to be near higher levels of air pollution



Non-Point Air – EJ Strategies and Measures



Engage with MN Tribal Nations



Volkswagen settlement funds – environmental justice



Grants to businesses in environmental justice areas

Thank you!

Frank Kohlasch

Frank.Kohlasch@state.mn.us

651-757-2500

Helen Waqui

Helen.Waqui@state.mn.us

651-757-2286