

Fostering Community Collaboration for Environmental Protection and Clean Air Around the Port of Providence

Innovative Initiatives to Improve Air Quality at Ports

NACAA Members Meeting

December 16, 2020



Rhode Island
Department of
Environmental
Management



Port Overview

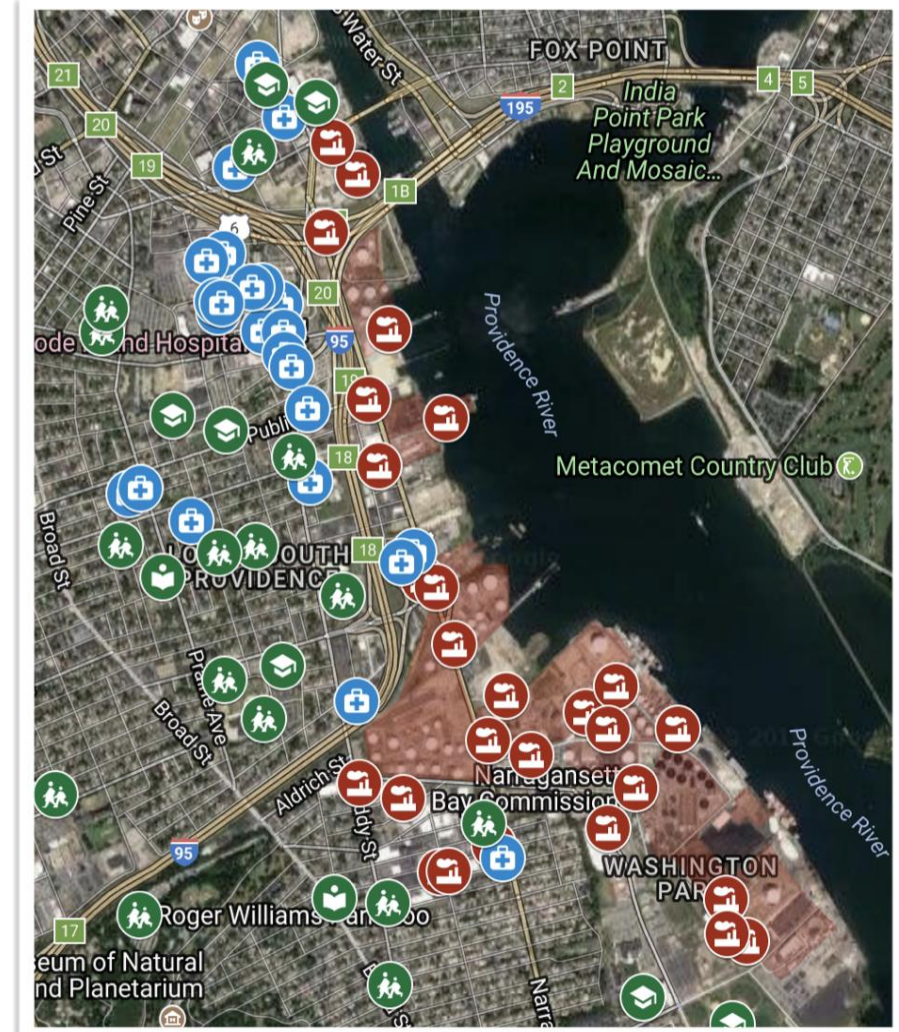


Bulk commodity port:

- Petroleum products
- Scrap Metal
- Chemicals
- Asphalt
- Cement
- Road Salt
- Liquid Propane Gas (LPG)
- Liquefied Natural Gas (LNG)
- Hazardous materials and waste

Key Geographical Aspects:

- Intersection of two major interstate highways
- Adjacent to major medical/health complex
- Historically filled land
- Low elevation- threatened by impacts from climate change





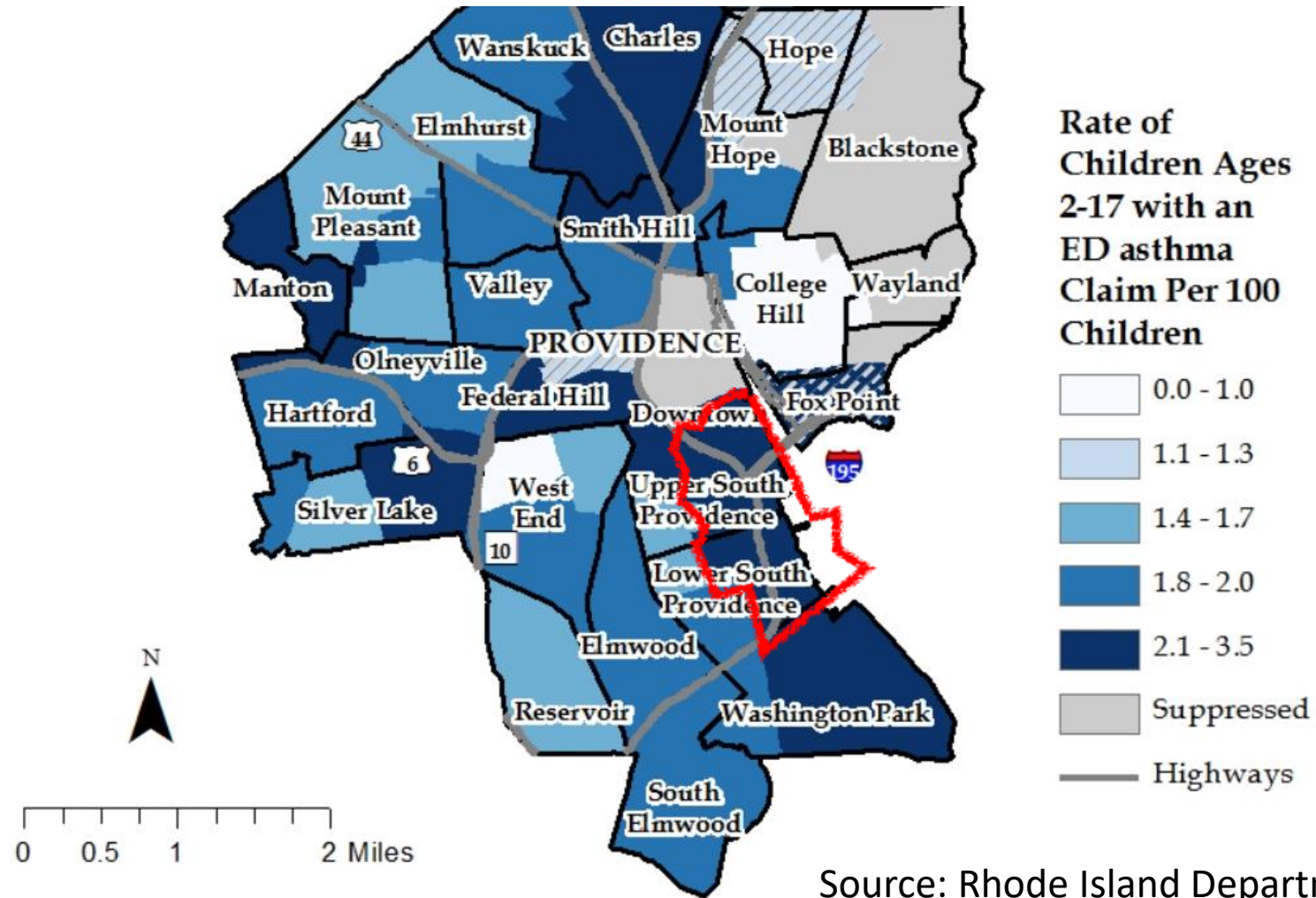
Near Port Communities & Demographics

Near-port communities:

- 15,000 people within 1/2 mile
- 74% people of color
- 61% low-income families
- 18% English not primary language

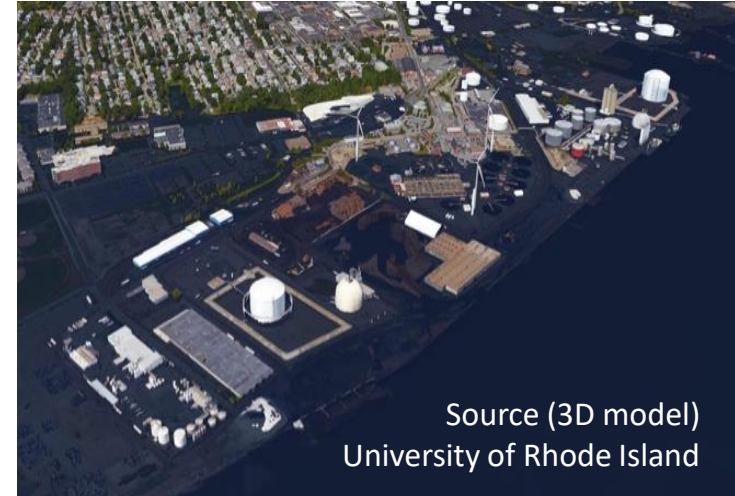


Medicaid Asthma Data



Source: Rhode Island Department of Health, 2019

Ports and Climate Change



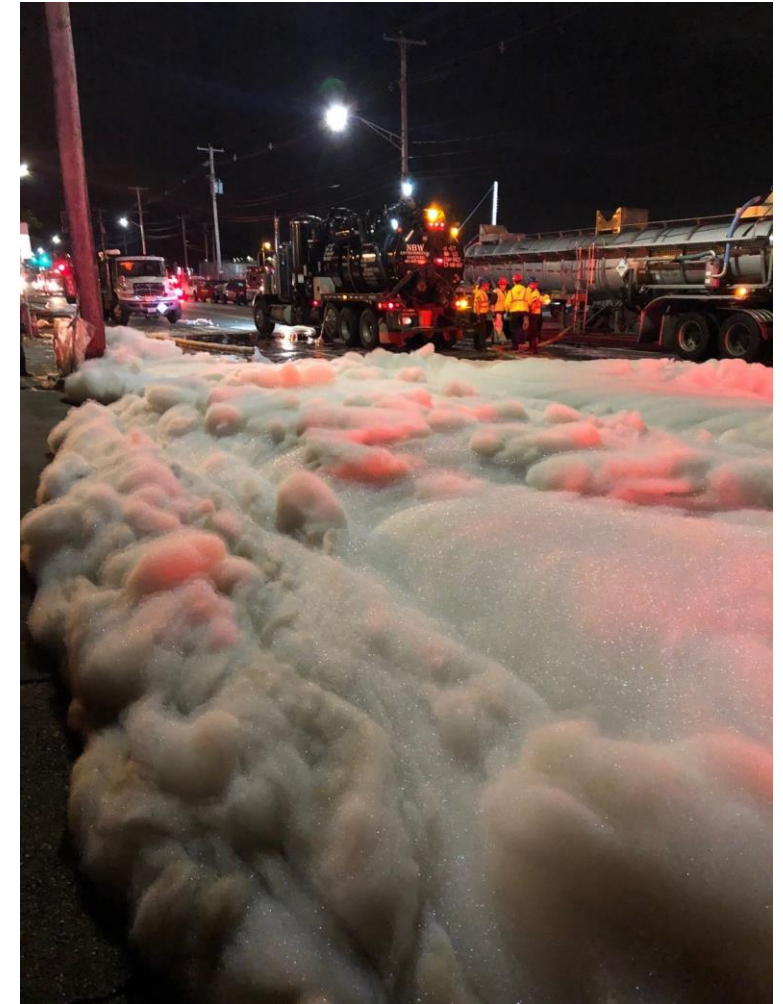
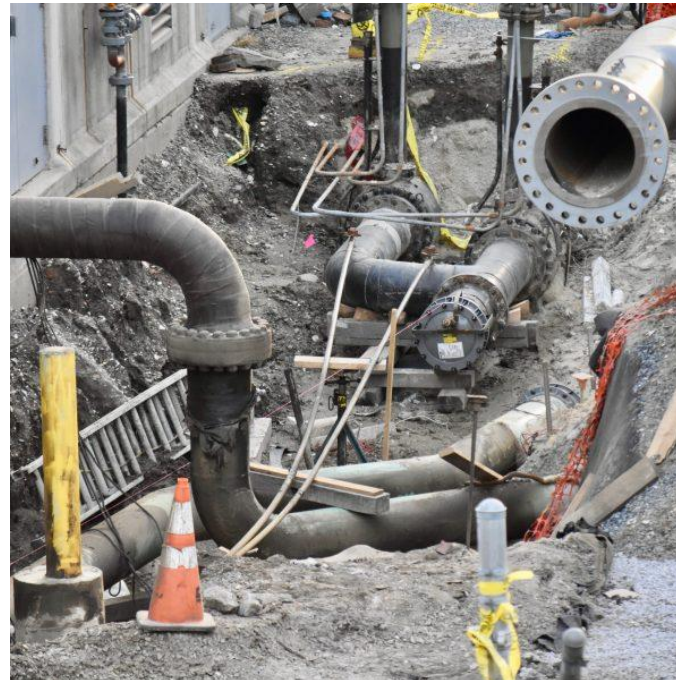
HURRICANE RHODY SIMULATION

- 1938 Hurricane Flood Model (StormTools)
- Category 3 storm
- Direct hit on Narragansett Bay
- Winds at 111-129 mph
- 6-10 foot wave height
- Storm tide 21"

Recent Incidents



- March 2017-Natural Gas Pipeline
- October 2017- Sinking of Barge
- October 2018-Gasoline Spill



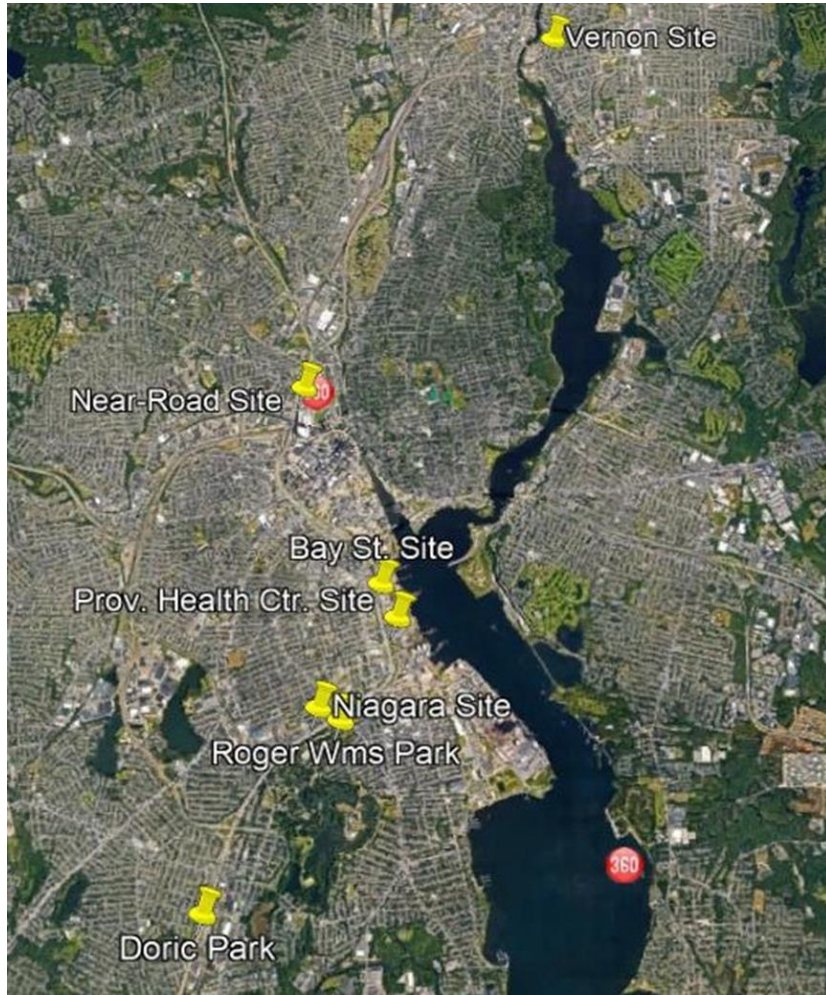


Recent Other Regulatory Issues

- Shell Terminal Title V Operating Air Permit renewal
- Sprague Oil Terminal Odor Issues
- LNG Liquifaction Project
- Proposed Transfer Station & Construction & Demolition Debris Processing Facility



Previous Air Monitoring



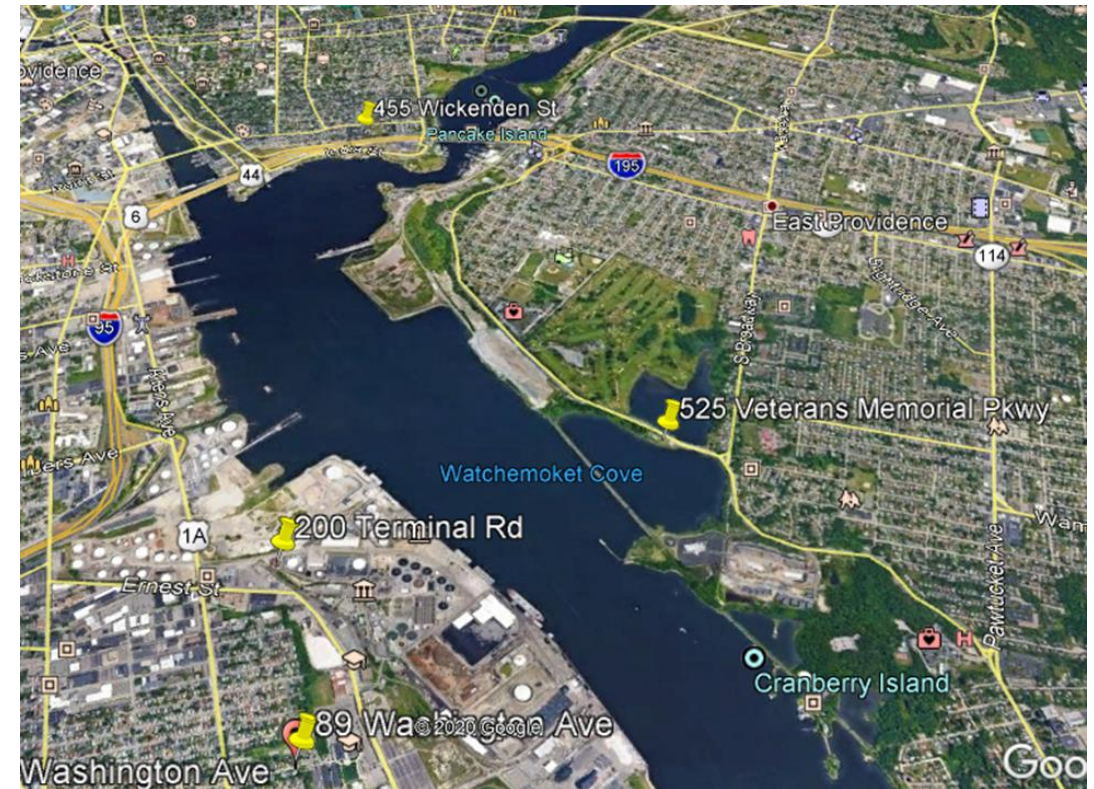
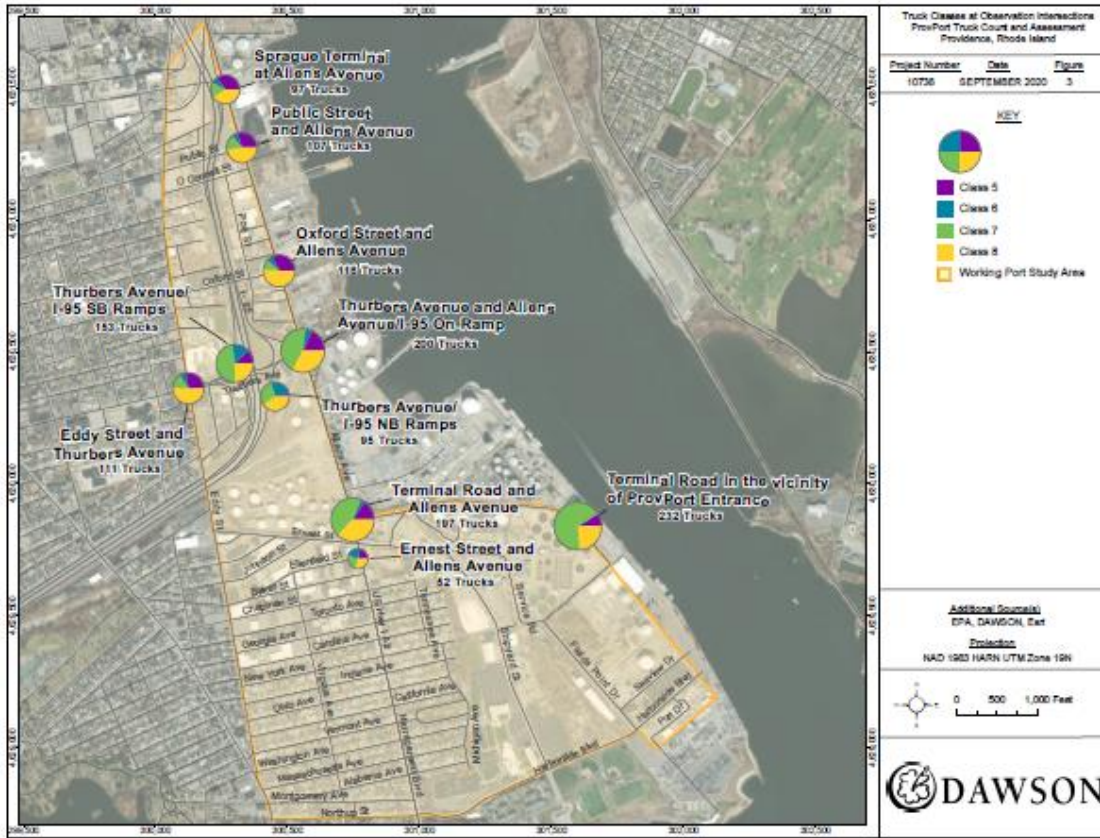
- 2015 Community Scale Air Toxics Monitoring Study
- Near Road (Rt 95) emissions of Black Carbon, Particulate and Volatile Organic Compounds
- Monitors located in vicinity of the Port



Ongoing Studies

- Port Area Truck Count & Assessment Study

- Community Scale Air Toxics Study & Low-Cost Sensors





Investments

- Vehicle Replacement Program- Focused at the Port of Providence & ProvPort
- Brownfields- MSC Campus & Fields Point Investments

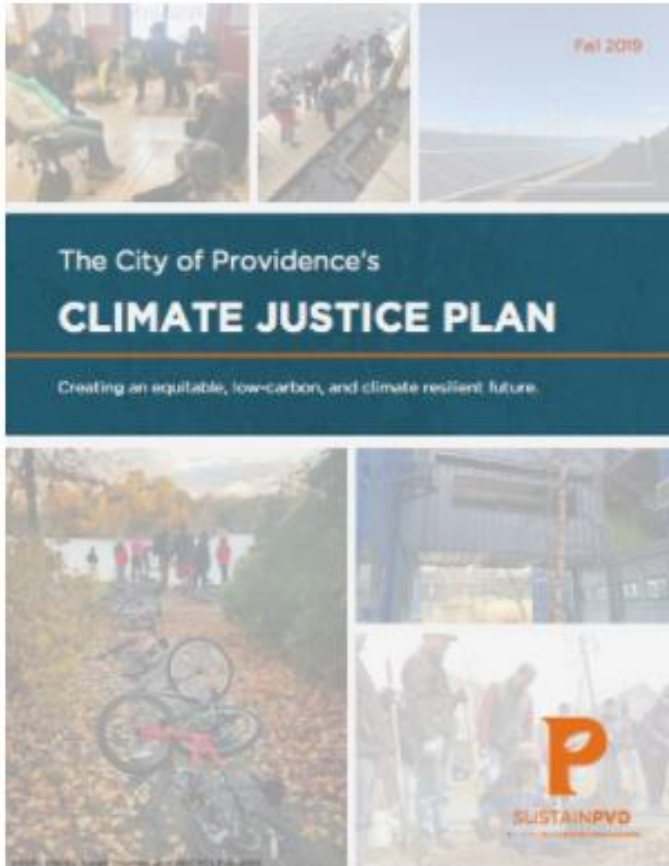


Clear Gaps/Issues on Communication & Coordination



- Only communications were in “crisis mode” related to projects
- Format for interactions not conducive to actually communicating
- Government silos were ineffective for answering concerns and frustrating to the community
- Hard for people in the neighborhoods to actively engage in their “free time”
- Concerns over cumulative historic impacts

[This Photo](#) by Unknown Author is licensed under [CC BY-NC](#)



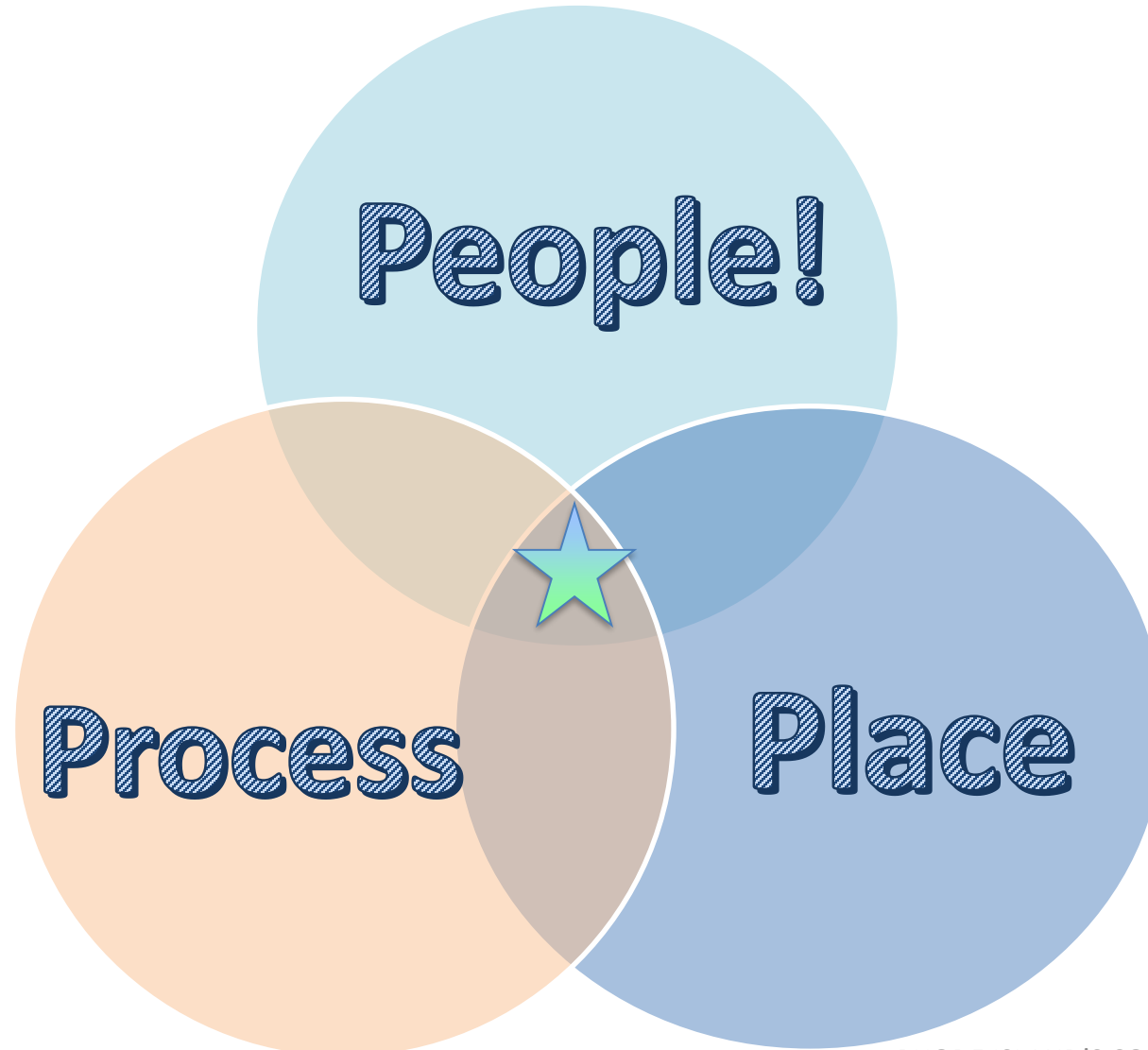
(Fall 2019)

- **PVD Climate Justice Plan** - Co-developed by the City's Office of Sustainability and the Racial and Environmental Justice Committee (REJC) of Providence, includes seven key objectives, 20+ targets, and over 50 strategies aiming to create a truly equitable, low-carbon, climate resilient city.

Green Justice Zones



- Develop a Community-led vision for the Port Green Justice Zone in order to create an equitable green Port of Providence
- Logistics and set up:
 - Identified as an EPA-DEM Area of Collaboration in PPA
 - Funded through the PPG
 - Structured as a grant/contract with REJC
- Project Design Principles:
 - Support frontline community members to be central collaborators of the Port of Providence, by providing resources to lead, vision, and build a green justice zone in the Port of Providence
 - Build relationships between DEM and port community members of color based on mutual respect and accountability
 - Create a frontline-community led vision and plan for the Port Green Justice Zone (aligned with the Climate Justice Report)





Community Goals for the Port GJZ

- *Making investments in sustainability and equity in neighborhoods that have been disinvested in and are overburdened with pollution, support community members in developing action plans alongside City officials to address the priorities and concerns of the neighborhood. Green Justice Zones seek to achieve health equity, improved quality of life, and climate resilience in frontline communities.*
- *Work towards a zero emissions, pollution-free port: Implement strategies to reduce climate and other pollution from port operations including vessels, trucks, cargo-handling equipment, and other industrial processes.*
- *Work towards a clean port economy that restricts the import and storage of hazardous and polluting materials in the Port with a goal to phase out such materials by 2040.*



Key Goals from DEM



Enhanced dialog with community

Enhanced training on anti-racism and equity

Building better, stronger networks and relationships

Understanding, respecting, and responding to community-centric perspective on things

Strive towards collaborative decision-making

Be more directly responsive to needs, desires, and vision of community

Future Collaboration



- Creation and Implementation of Green Justice Zones
- Collaborative, Community-Centric Decision-Making
- Game Changing Innovations- Transportation & Climate Initiative
- Joint Projects and Grant Opportunities



Thank You!

Terry Gray

RI Department of Environmental Management

Deputy Director for Environmental Protection

401-222-4700, x 7100

Terry.Gray@dem.ri.gov



Rhode Island
Department of
Environmental
Management