

Environmental Justice Coordination

Trish Koman, PhD, MPP, Senior Environmental Justice Coordinator & Scientist

US EPA Office of Air and Radiation

October 20, 2022

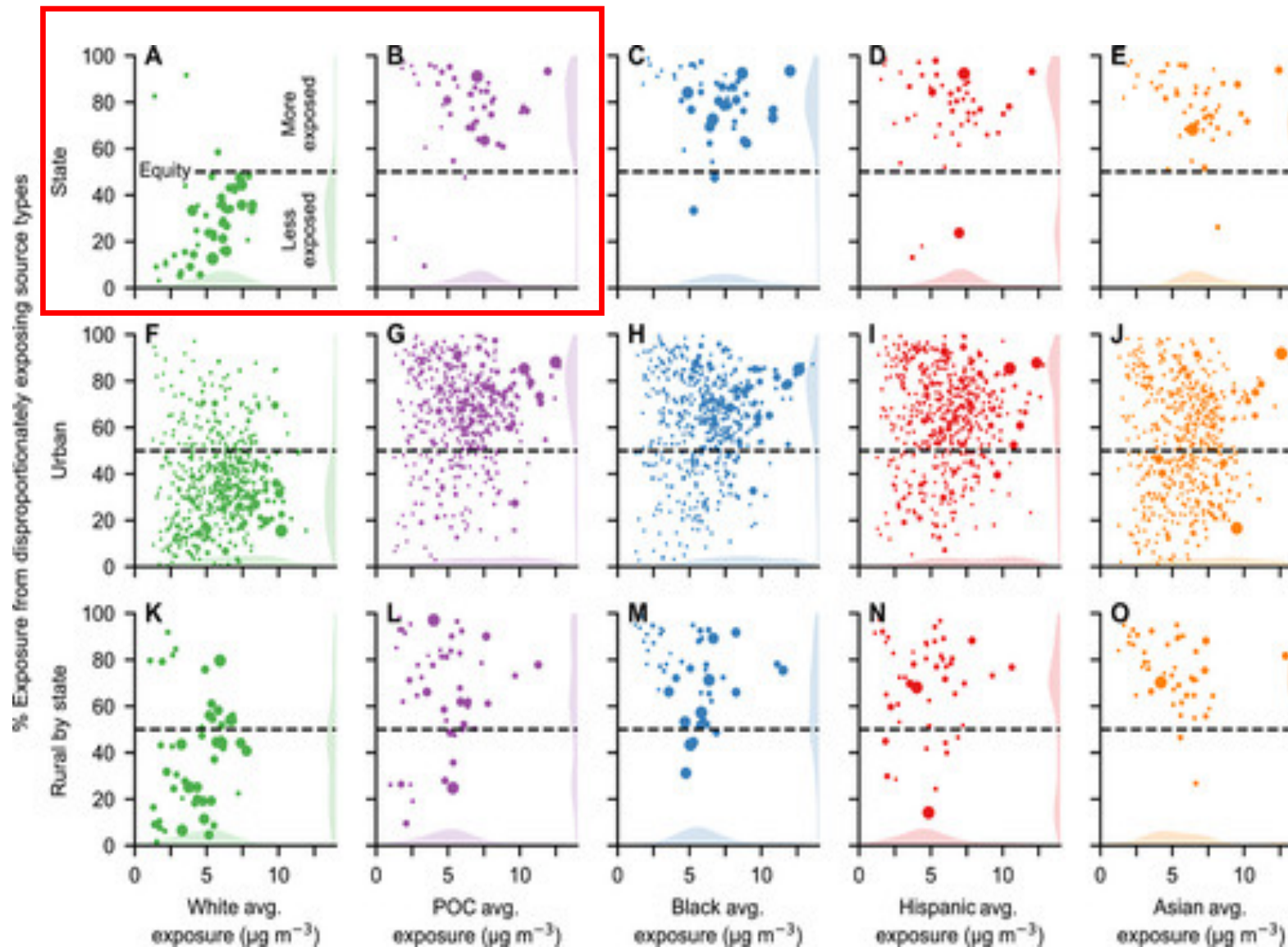
Outline

- Motivation
- Justice 40
- EPA Long-term Strategic Plan FY23-26 and Equity Action Plan
- Environmental Justice in Rulemaking
 - Meaningful engagement
 - Analysis

Motivation

*Vulnerability: “A matrix of **physical, chemical, biological, social, and cultural factors** that result in certain communities and subpopulations being more susceptible to environmental factors because of **greater exposure** to such factors or a **compromised ability to cope with and/or recover** from such exposure.”*

Source: WHO (2006). Principles for Evaluating Health Risks in Children. Environmental Health Criteria 237



*Example of a disparity in an environmental concentration ($\text{PM}_{2.5}$) by race/ethnicity

$\text{PM}_{2.5}$ pollutants disproportionately and systemically affect people of color in the United States, Tessum et al. 2021, Science Advances Volume: 7, Issue: 18, DOI: (10.1126/sciadv.abf4491)

Justice 40

In January 2021, President Biden's Executive Order 14008 – Tackling the Climate Crisis at Home and Abroad announced Justice40.

Mandates that at least 40% of the benefits of certain federal programs must flow to disadvantaged communities.

OAR Justice 40 Covered Programs

- American Rescue Plan - Diesel Emissions Reduction Act (DERA) rebate program
- American Rescue Plan - Direct Awards to Air Agencies for Continuous Monitoring of PM2.5 and Other Common Air Pollutants
- American Rescue Plan - Enhanced Regional Capacity for Short-term Community Monitoring Needs
- American Rescue Plan - Grant Competition for Community Monitoring
- Categorical Grant: Tribal Air Quality Management
- Diesel Emissions Reductions Act (DERA)
- Federal Support for Air Quality Management: (American Indian Air Quality Training Program)
- DERA (includes Ports Initiative)
- Reduce Risks from Indoor Air
- Targeted Airshed Grants

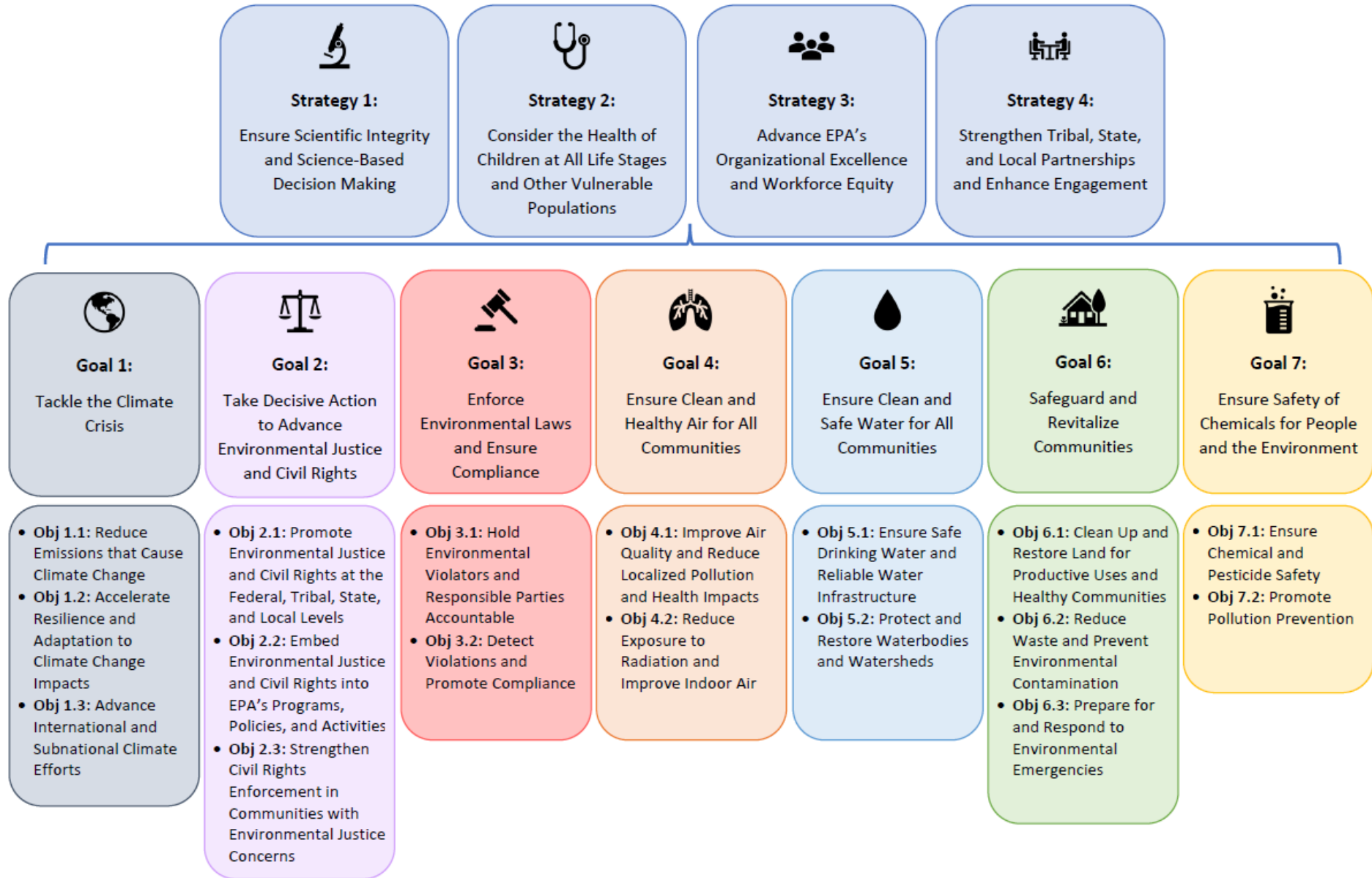
EPA's Long-term Strategic Plan FY 23-26

Required by the Government Performance and Results Act Modernization Act of 2010 (Public Law 11-352), the EPA Long-term Strategic Plan communicates the roadmap for accomplishing EPA's environmental priorities over the next four years.

FY 2022-2026 EPA Strategic Plan Framework

Mission: To Protect Human Health and the Environment

Principles: Follow the Science, Follow the Law, Be Transparent, Advance Justice and Equity



Goal 2 and Equity Action Plan Principles

- **EPA's Long-term Strategic Plan Objective 2.2:**

“Integrate environmental justice and civil rights in all of the Agency’s work to maximize benefits and minimize impacts to underserved and overburdened communities”

- In the context of rulemakings, by

- “Assessing impacts to pollution-burdened, underserved, and Tribal communities in regulatory development processes and considering regulatory options to maximize benefits to these communities,” and
- “Taking immediate and affirmative steps to improve early and more frequent engagement with pollution-burdened and underserved communities affected by agency rulemakings, permitting and enforcement decisions, and policies.”

Under EO 13985, EPA's Equity Action Plan:

- Develop comprehensive framework for considering cumulative impacts in relevant EPA decisions and operationalize that framework in EPA's programs and activities

Expanding EPA's Environmental Justice Analysis Capabilities

- More than half of all economically significant final rules promulgated by EPA between 2012 and 2021 quantitatively evaluate potential EJ concerns
 - Majority of these are characterizations of baseline only and heavily rely on proximity analyses
- OAR has invested in improved capabilities to evaluate effects for regulatory options (e.g., PM, ozone, air toxics)
- Few cases where regulatory analysis evaluates cumulative impacts, though some have included information about baseline releases or risks in other media (e.g., HFC, steam electric)

Questions?

Contact: koman.patricia@epa.gov