

Community Science & Engagement

Historic West End Case Study

Mecklenburg County Air Quality

Leslie Rhodes - Air Quality Division Director

Tori Jercich - Air Quality Specialist

MECKLENBURG COUNTY

AIR QUALITY

Introduction & Background

MECKLENBURG COUNTY

AIR QUALITY

Response & Process

MECKLENBURG COUNTY

AIR QUALITY

Keys to Success

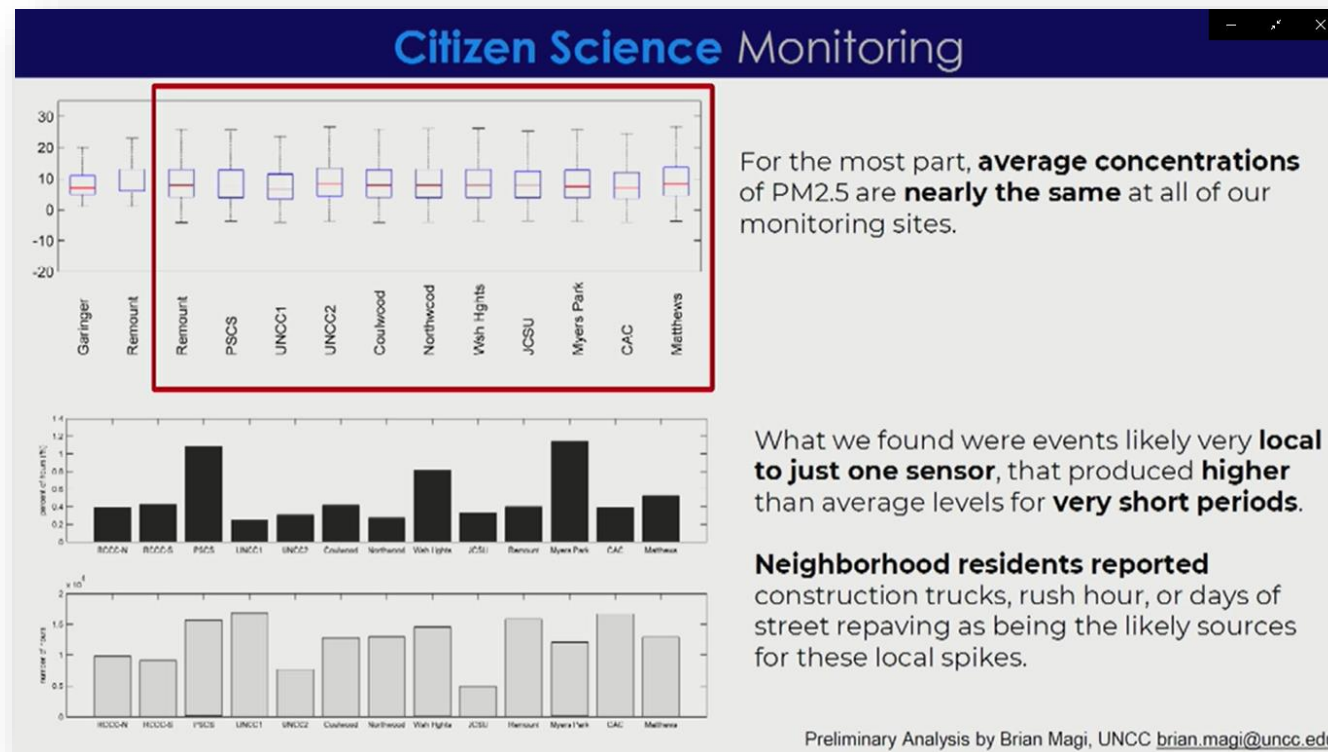
- Reframe your thinking
- Research
- Relationships
- Resource, not Roadblock

Reframe your thinking

- Focus on why they collected the data:
 - What does the community think the data means?
 - What does the community want out of coming to you with the data?
- Start by listening to their concerns

Research

- Internally, we reviewed the data and did our own analysis
- Partnered with a trusted source (a UNC Charlotte professor) to communicate information to the public



Relationships

- Build trust & listen
- Transparency
- Long-term partnership



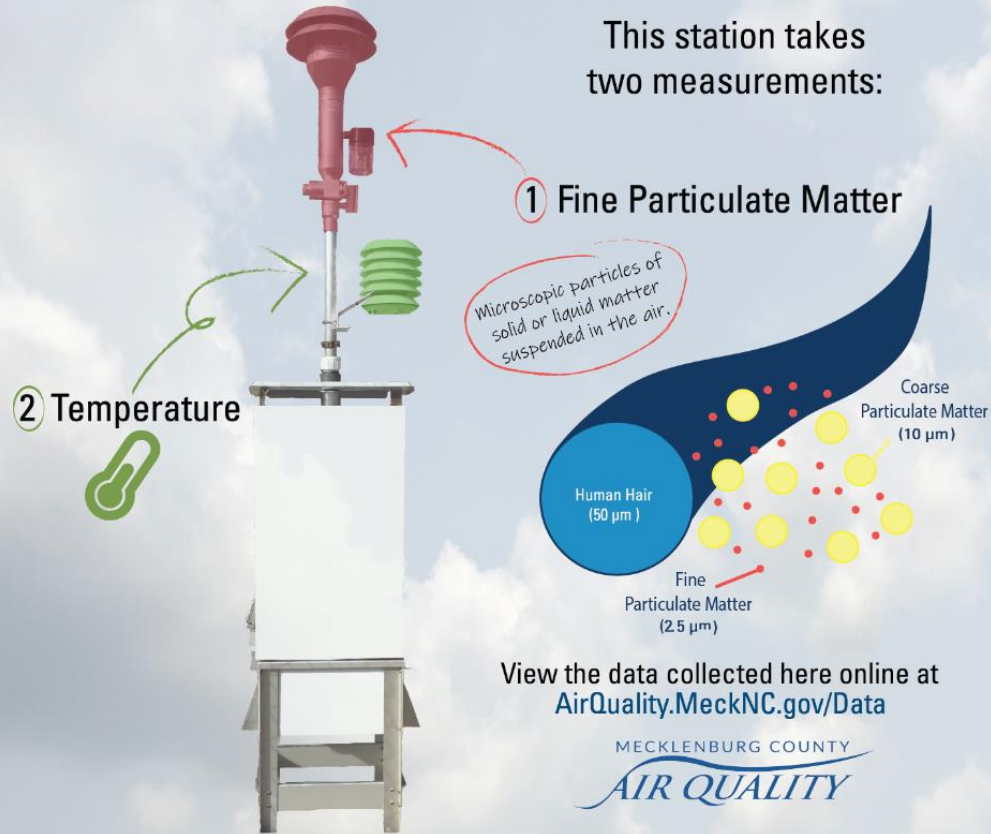
Be a Resource, Not Roadblock

- Created & helped distribute educational materials about backyard burning
- AQ 101 presentations in the community
- Friendship Park Monitoring Station
 - Open House
 - Educational materials



Welcome to the Friendship Park Air Quality Monitoring Station!

This station takes two measurements:



View the data collected here online at AirQuality.MeckNC.gov/Data



9/19/2019

Megan Green
Mobile Sources Program Manager
Mecklenburg County Air Quality
2145 Suttle Avenue, Charlotte, NC 28208

To whom it may concern,

We are writing on behalf of the AirKeepers of the Historic West End to support Mecklenburg County and their efforts to expand access to EV charging stations in our neighborhoods. Our area is home to some of the region's most historic neighborhoods and institutions, as well as being a center of critical areas of need in public health, proximity to traffic, industrial facilities, and underserved populations.

We strongly support efforts to prioritize sustainable investment in the Historic West End as a way to add access to innovative technologies, create opportunities for local economic development, give residents improved mobility choices, and improve environmental health for our neighbors who need it most.

We look forward to working with you to advance EVs and charging stations in the Historic West End

Sincerely,

Matthe Marshall
Matthe Marshall
Historic Washington Heights

Ronald Ross
Ronald Ross
Northwood Estates Community Organization

William Hughes
William Hughes
Oaklawn Park

HISTORIC WEST END NEIGHBORS

BACKYARD BURNING ALERT

GOOD NEIGHBORS DON'T BURN TRASH



There's always someone downwind.

Smoke from burning trash is harmful. It poses a health threat to you, your family & neighbors, especially kids and seniors



Chemicals from burning trash cause bronchitis, cancer, emphysema & other lung conditions.

An average classroom in Charlotte has 3 students that suffer from asthma.

Asthma is the #1 reason kids miss school in Charlotte.

TODAY'S TRASH MAKES TOXIC SMOKE



Plastic or paper with coatings & ink create particles in the air.



Particles that are very dangerous to breathe.



SMALL FIRES TURN INTO BIG TROUBLE

Report unsafe conditions by calling 311.

Burning trash is against the law and could lead to a \$200 ticket!

CALL 311 FOR SAFE REMOVAL



*Not all bulky items are picked up on the same day.

Call 704-336-7600 for free bulky pick-up and for info on the next free document shredding event in near Historic West End.

MECKLENBURG COUNTY

AIR QUALITY

Questions?

Leslie.Rhodes@MeckNC.gov

Victoria.Jercich@MeckNC.gov

AirQuality.MeckNC.gov

MECKLENBURG COUNTY

AIR QUALITY