

NACAA Annual Meeting

Implementation of Colorado's Environmental Justice Act

Nathalie Eddy

Air Quality Liaison, Environmental Justice Program
Colorado Department of Public Health & Environment
May 18, 2022



COLORADO
Department of Public
Health & Environment

Implementation of the Colorado Environmental Justice Act

1.

INTRODUCTION
TO CDPHE'S
ENVIRONMENTAL
JUSTICE
TEAM

2.

EJ ACTION TASK
FORCE

EJ ADVISORY
BOARD

EJ
OMBUDSPERSON

3.

MAPPING
DISPROPORTION-
ATELY IMPACTED
COMMUNITIES

4.

IMPLEMENTING
BEST PRACTICES
FOR
COMMUNITY
ENGAGEMENT

5.

STRENGTHENING
ENVIRONMENTAL
JUSTICE IN
RULEMAKINGS,
PERMITTING AND
ENFORCEMENT

CDPHE Environmental Justice Unit

Who We Are



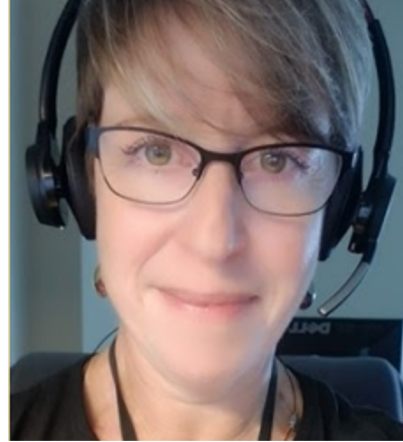
Joel Minor
Program Manager



Nathalie Eddy
Air Quality Liaison



Lubna Ahmed
Boards Manager



Rosario Russi
Translation &
Interpretation Specialist



Morgan Cameron
Program Assistant



Meghan Howes
Communications
Specialist

Joining us soon:

- *Environmental Justice Community Engagement Specialist*
- *Environmental Justice Research & Policy Analyst*
- *Environmental Justice Grants Specialist*

Visit our website to learn more: <https://cdphe.colorado.gov/environmental-justice>



COLORADO
Department of Public
Health & Environment

Colorado Environmental Justice Act

HB21-1266

EJ

DECLARES

Environmental justice as a state policy for Colorado

E

CREATES EJ ENTITIES

EJ Action Task Force
EJ Advisory Board

O

CREATES EJ OMBUDSPERSON

Creates a new position for Colorado's 1st EJ Ombudsperson.

D

DEFINES

Defines Disproportionately Impacted Communities.

A

AIR & CLIMATE

Provides specific air and climate provisions.

Definition of Environmental Justice

“Environmental justice recognizes that all people have a right to breathe clean air, drink clean water, participate freely in decisions that affect their environment, live free of dangerous levels of toxic pollution, experience equal protection of environmental policies, and share the benefits of a prosperous and vibrant pollution-free economy.”

Environmental Justice Act (HB21-1266), § 2(1)(a)(I)



Environmental Justice Action Task Force



Arthur Ortegon



Beatriz Soto
Committee Co-Chair



Dominique Gómez



Doug Dean



Ean Tafoya
Task Force Co-Chair
& Committee Chair



Gary Arnold



Hilda Nucete
Committee Chair



Jamie Valdez



Jonathan Asher



Jordan Beezley



Kimberly
Mendoza-Cooke



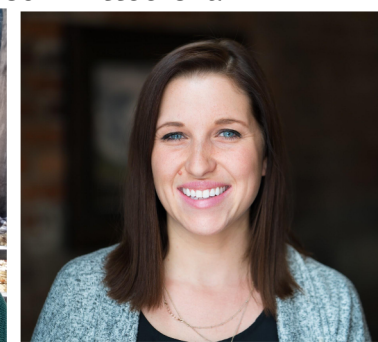
Mara Brosy-
Wiwchar



Marsha Nelson



Meera Fickling



Megan Holcomb



Michael Sapp



Renée Millard-Chacon
Committee Co-Chair



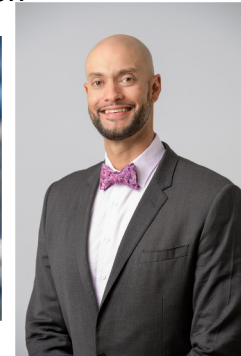
Robyn Wille



Dr. Sheila Davis



Trisha Oeth



Tyson Johnston
TF Co-Chair



Uni Blake
Committee
Chair

Appointment vacancies:

- Southern Ute Tribe
- Ute Mountain Ute Tribe
- House Minority Leader
- Senate Minority Leader (x2)



COLORADO
Department of Public
Health & Environment

EJ Action Task Force - Recommendations & Subcommittees

EQUITY ANALYSIS

Should agency decisions in disproportionately impacted communities include an equity analysis (+ cumulative impacts analysis)?

DATA & HEALTH DISPARITIES

How close the data gaps related to environmental justice and environmental health disparities?

DEFINITION OF DISPROPORTIONATELY IMPACTED COMMUNITIES

Any revisions recommended?

EJ ACTION TASK FORCE

BEST PRACTICES FOR COMMUNITY ENGAGEMENT

Are the 6 best practices in the EJ Act effective and adequate?

Environmental Justice Advisory Board Members



Aaron Martinez
Pueblo



Bianka Emerson
Lakewood



Christina Yebuah
Aurora
Secretary



Dr. David Rojas Rueda
Ft. Collins



Jason Swann
Denver



Phuonglan Nguyen
Denver
*non-voting designee
of Executive Director*



Jonathan Skinner-
Thompson
Boulder



Jorge Figueroa
Lafayette
Co-chair



Josette Jaramillo
Pueblo
Co-chair



Philip Lopez
Commerce City



Steven Arauza
Rifle



Rupal Shah
Lakewood

EJ Advisory Board - Duties

COMMUNITY IMPACT FUND

Implement a grant program to fund environmental mitigation projects in Disproportionately Impacted Communities

PUBLIC COMPLAINT PROCESS

Develop a public complaint process in coordination with the ombudsperson.

EJ Advisory Board

PROVIDE EJ GUIDANCE

Make recommendations about EJ issues to Governor and CDPHE ED

ADVISE ON COMMUNITY ENGAGEMENT

Provide CDPHE advice on best practices for engagement with disproportionately impacted communities

Colorado Environmental Justice Ombudsperson



Marcus Howell

EJ Ombudsperson

ADVOCATE FOR &
LIAISON TO DI
COMMUNITIES

PROCESS
ENVIRONMENTAL
JUSTICE
COMPLAINTS

EJ
Ombudsperson

IMPROVE FLOW OF
INFORMATION TO DI
COMMUNITIES

ADVISE STATE
AGENCIES ON
COMMUNITY
ENGAGEMENT

Definition of Disproportionately Impacted Community

- **Demographics**: Census Block Groups with:
 - More than 40% low income households; or
 - More than 40% people of color; or
 - More than 40% housing cost-burdened households
- **History**: Communities with a history of environmental racism perpetuated through exclusionary laws
- **Cumulative Impacts**: Communities where multiple factors (i.e. socioeconomic stressors, disproportionate environmental burdens & lack of public participation) cumulatively contribute to persistent public health & environmental disparities



Colorado EnviroScreen



Aug / Sept 2021	Fall 2021 & Spring 2022	February to April 2022	June 2022
Kick Off & Engagement Interviews, focus groups, public meeting	Tool Development Develop mapping tool, methodology, and visualization.	Beta Testing Gather feedback on preliminary tool in focus groups and public meeting.	Launch v1.0 CO EnviroScreen v1.0 goes live!

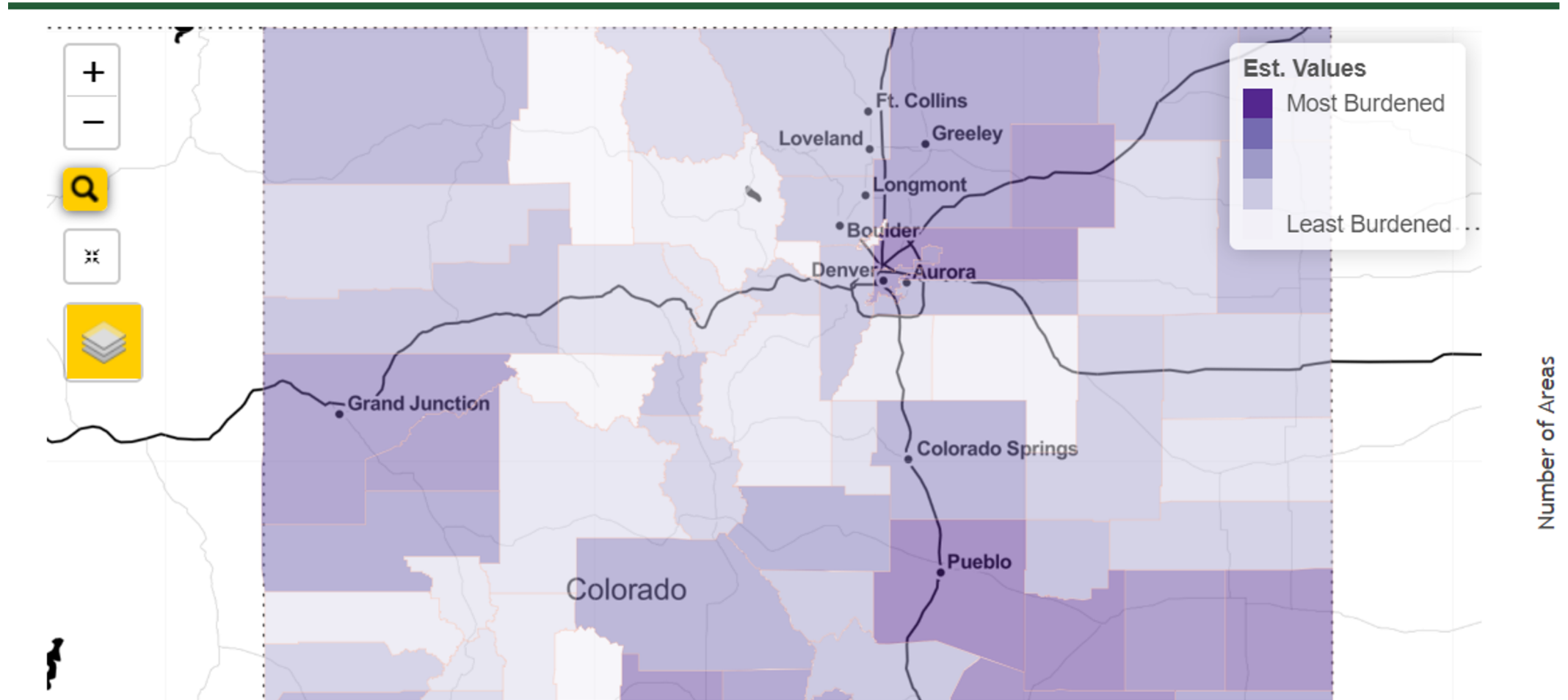
Visit our website to learn more and to sign up for beta testing!

<https://cdphe.colorado.gov/enviroscreen>

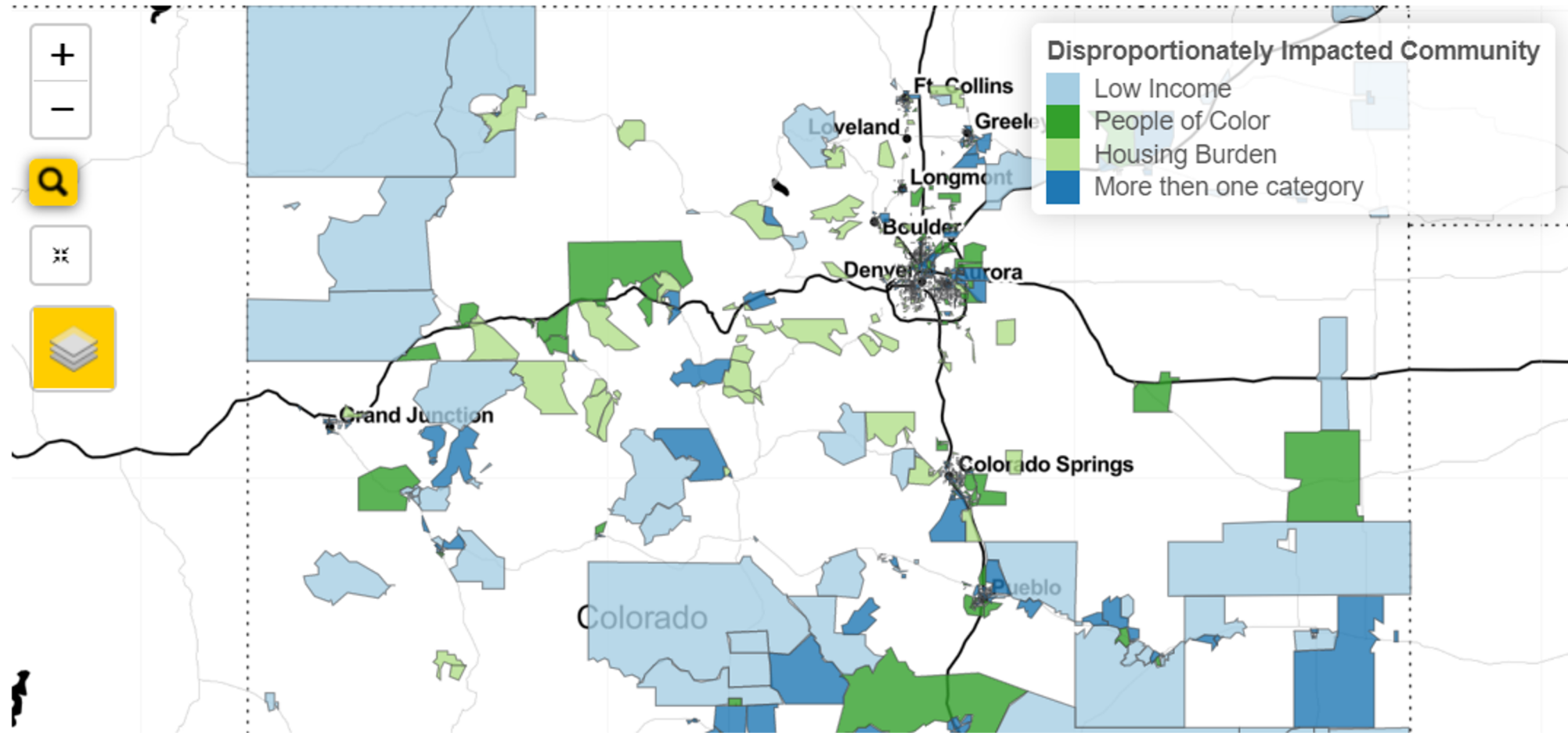


COLORADO
Department of Public
Health & Environment

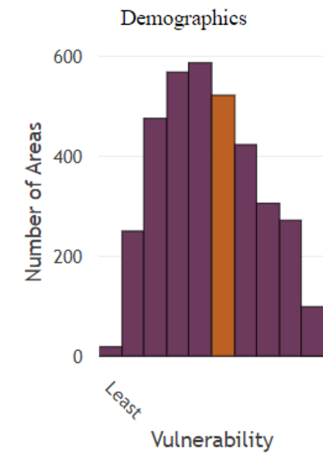
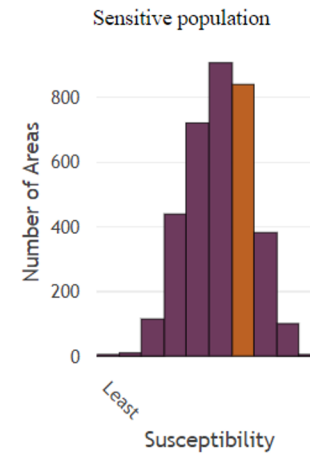
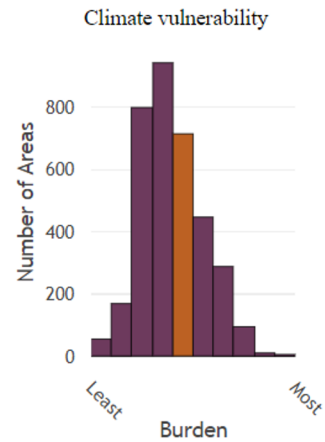
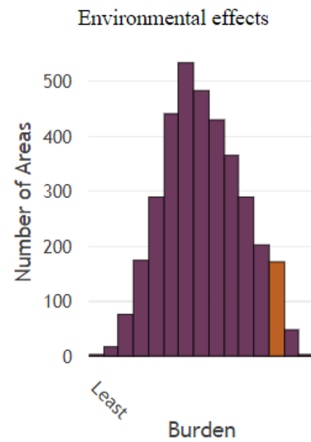
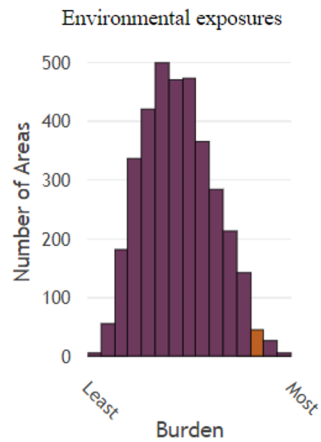
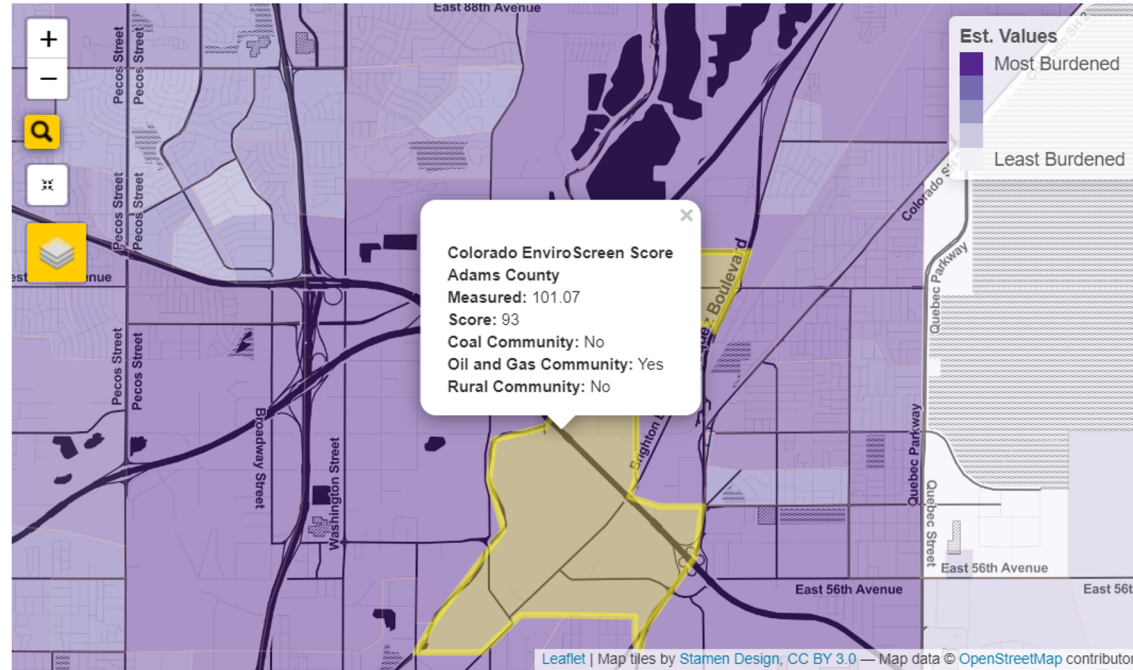
Colorado EnviroScreen scores - across Colorado



Map of Disproportionately Impacted Communities



Census Block Group detail



Environmental Exposures & Sensitive Population

- Group Component Scores
- Component Score
- Environmental Exposures**
- Environmental Effects
- Climate Vulnerability
- Sensitive Population
- Demographics
- Community Classifications

Show 10 entries

Search:

	GEOID	County Name	Air toxics emissions Percentile	Air toxics emissions	Diesel PM Percentile	Diesel PM	Drinking Water Violations Percentile	Drinking Water Violations	Lead exposure risk Percentile	Lead exposure risk	Noise Percentile	Noise	Other Air Pollutants Percentile	Other Air Pollutants
1	080010089011	Adams County	94.89	0.63	94.33	0.59	11.24	0.01	78.57	0.56	86.89	50.02	99.49	
2	080010089012	Adams County	86.14	0.11	94.33	0.59	11.24	0.01	92.69	0.81	83.35	49.09	97.57	
3	080010090011	Adams County	10.5	0	83.52	0.43	11.24	0.01	69.18	0.41	53.74	46.09	58.82	
4	080010090012	Adams County	26.19	0	83.52	0.43	11.24	0.01	55.79	0.23	67.41	47.31	28.6	

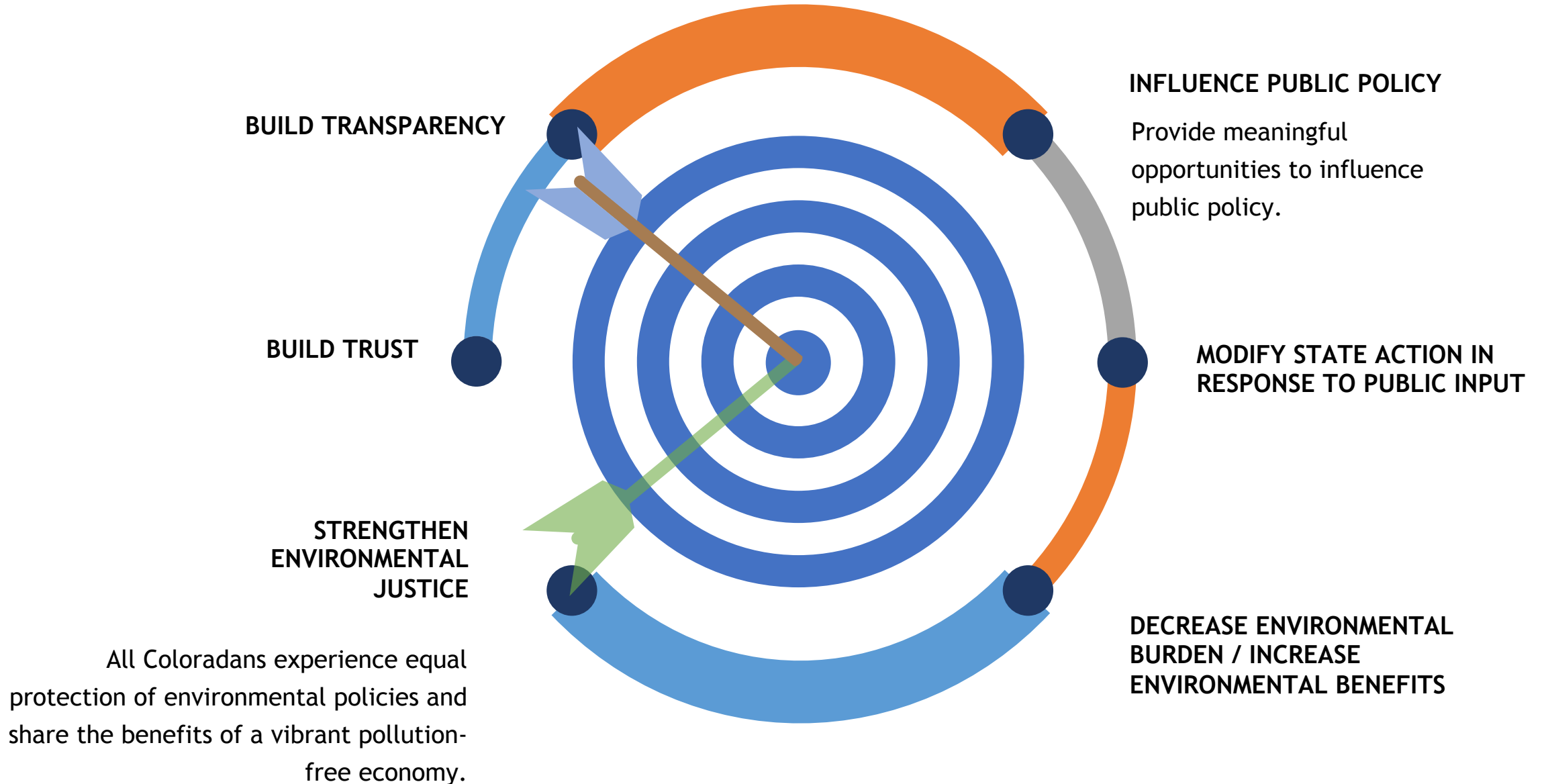
- Group Component Scores
- Component Score
- Environmental Exposures
- Environmental Effects
- Climate Vulnerability
- Sensitive Population**
- Demographics
- Community Classifications

Show 10 entries

Search:

	GEOID	County Name	Asthma hospitalization rate Percentile	Asthma hospitalization rate	Cancer prevalence Percentile	Cancer prevalence	Diabetes prevalence Percentile	Diabetes prevalence	Heart disease in adults Percentile	Heart disease in adults	Life expectancy Percentile	Life expectancy
1	080010089011	Adams County	76.82	854.64	26.07	5.2	90.01	16.2	28.38	2	85.61	
2	080010089012	Adams County	76.82	854.64	26.07	5.2	90.01	16.2	28.38	2	85.61	
3	080010090011	Adams County	95.44	1316.71	23.8	5.1	85.16	15.5	49.25	2.6	79.14	

Goals of Outreach to and Engagement of Disproportionately Impacted Communities



EJ Act: Best Practices for Community Engagement

Time - varied times and days

Notice - provide at least 30 days notice

Outreach TO communities

Methods for receiving public input FROM
communities

Locations of meetings

Outreach materials - language, accessibility

Air Quality Control Commission

December 2021 Oil & Gas Rulemaking

- ***Direct Regulation:*** Requires earlier and greater emissions reductions for upstream & midstream O&G operations in DI communities
- ***Greenhouse Gas reduction:*** Sets lower intensity targets in DI Communities
- ***Midstream Emissions:*** Provides DI Communities a voice in Midstream Steering Committee



Memorandum of Understanding CDPHE & EPA Region 8 Environmental Justice in Enforcement & Compliance

- Signed MOU 3/8/22s
- Expands collaboration between EPA & CDPHE
- Prioritizes disproportionately impacted communities through:
 - Strategic targeting of inspections;
 - Collaborative enforcement actions; and
 - Community engagement
- Next steps:
 - Creating an annual MOU workplan
 - Community engagement & feedback
- [Click here to read the MOU](#)





Questions?

<https://cdphe.colorado.gov/environmental-justice>

Nathalie Eddy
Air Quality Liaison
Environmental Justice Unit, CDPHE

nathalie.eddy@state.co.us

Tel: 720 633-6436



COLORADO
Department of Public
Health & Environment