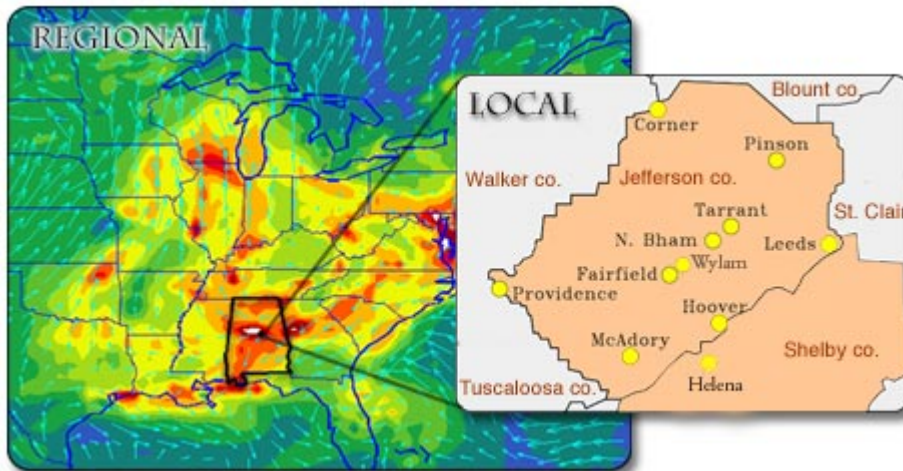


EMPACT-BIRMINGHAM



[Home Page](#)

EMPACT (Environmental Monitoring for Public Access and Community Tracking) is an EPA program to assist local agencies to improve environmental monitoring and assessment and, especially, outreach to the public.

EMPACT-Birmingham is an EMPACT-funded program of local air quality monitoring, assessment and public outreach, under the overall management of the Jefferson CO Dep. of Health (JCDH), and in partnership with the Alabama Department of Environmental Management (ADEM), The University of Alabama in Huntsville (UAH), and MCNC Environment Program (NC).

This Website is the main vehicle of EMPACT-BHM outreach to the public. A major innovation of EMPACT-BHM is to extend the air quality outlook from mainly local to local as well as regional (local impact of regional air pollution).

EMPACT-BIRMINGHAM



PROJECT OBJECTIVES

- 1. Continue the existing program of air quality monitoring, assessment and public outreach.**
- 2. Create a working partnership of state and local AQ management agencies with expertise at the state university.**
- 3. Extend program focus from mainly ozone to ozone and PM2.5. Extend program focus from local only to local and regional, utilizing both observation-based and state-of-the-art model-based information.**
- 4. Extend forecast modeling capability for both meteorology and chemistry, utilizing both statistical modeling and state-of-the-art real-time 3D Eulerian grid modeling.**
- 5. Extend timely and effective public outreach via internet, the news media, and other means.**
- 6. Develop a centralized database management system.**
- 7. Provide for local program sustainability and national program transferability.**

EMPACT-BIRMINGHAM

TODAY'S AIR QUALITY INDEX	LOCAL DATA	REGIONAL DATA	PROGRESS REPORT 2001	OTHER USEFUL LINKS	CONTACT & CREDITS	HOME
---------------------------	------------	---------------	----------------------	--------------------	-------------------	------

[Today's Air Quality Index](#)
[Current Air Quality Index Forecast](#)

[go back home...](#)
 Questions about this web site? Contact the [webmaster](#)

Link to Existing AQI

Link to AQI Forecast

Jefferson County Department of Health

- About JCDH
- Community Services
- Contact Us
- Disease Control
- Environmental Health
- Health Services
- Health Statistics

Text Version

JCDH HOME



Click here for a complete Guide to Services

Guide to Services



Jefferson County Department of Health
1400 6th Avenue South
Birmingham, AL 35233
205.933.9110

Air Quality Index

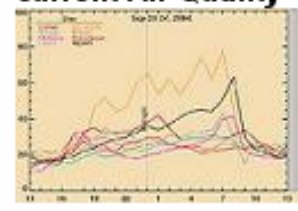
Monday, November 15, 2004

Current AQI - Updated after 2:00p.m. daily



The Air Quality Forecast is Moderate

Click below for current Air Quality



- [Frequently Asked Questions](#)
- [Job Opportunities](#)
- [Links](#)
- [Reference Materials Library](#)
- [Servicios en Español](#)

Flu Vaccine Update - 11/12/2004

SCORES AND REPORTS

- [2001 Vital Records Annual Report](#)
- [Animal Bite Report](#)
- [Communal Living Facilities Inspection Scores](#)
- [Daily Air Quality Index Report](#)
- [Hotel and Motel Inspection Scores](#)
- [Restaurant Scores](#)
- [School Immunization Audit Scores](#)
- [Swimming Pool Inspection Scores](#)
- [Tanning Salon Inspection Scores](#)

HEALTH-RELATED STATISTICS

- [Acute Hepatitis Cases](#)
- [Population Trends - 2000](#)

PRESS RELEASES

(click here for full list)

One Day Only: Jefferson County Department of Health to Give Flu Shots Tuesday, November 16 (November 12, 2004)

Jefferson County Department of Health to give 15,000 flu shots in one day (November 5, 2004)

Today's Supply of Flu Vaccine Depleted at all JCDH



Click for Schedule

West Nile Virus

[Frequently Asked Questions](#)

[Mosquito Avoidance Information](#)

[Updates](#)

[Links](#)



click here

Health Topics Made Easy

[Text Version](#)[JCDH HOME](#)[Daily Air Quality Index - Home](#)[Air Quality Guide for Ozone](#)[Air Quality Guide for Particle Pollution](#)[EPA AIRNow](#)

Daily Air Quality Index

JEFFERSON COUNTY DEPARTMENT OF HEALTH ENVIRONMENTAL HEALTH SERVICES AIR POLLUTION CONTROL PROGRAM

DAILY AIR QUALITY INDEX

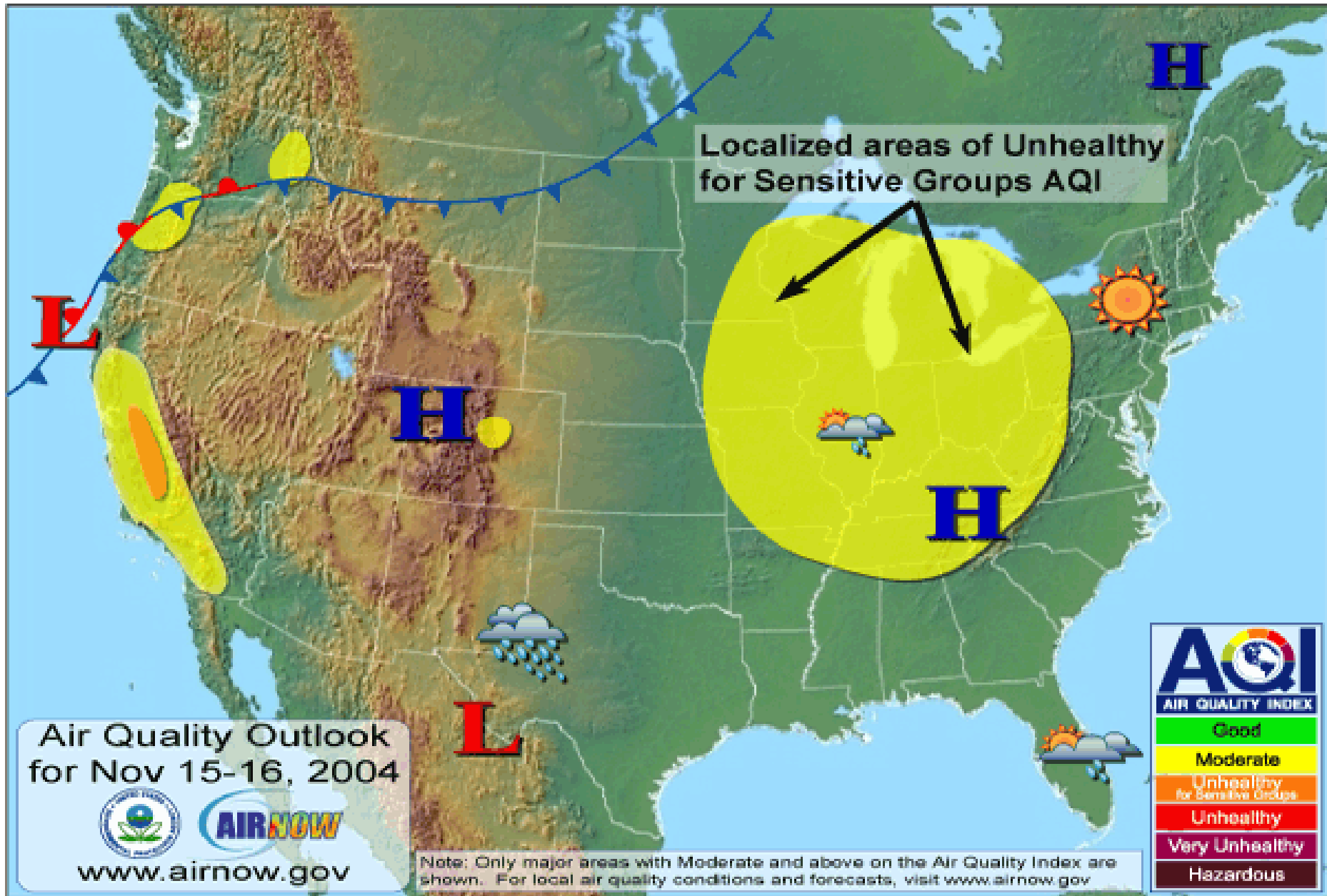
DATE: Monday, November 15, 2004

COLLECTION PERIOD ENDING DAILY AT: 2:00 PM CDT

Today's Air Quality Information	
Air Quality Index	32
Responsible Pollutant	Particulate Matter 2.5
Air Quality Description	Good

Note: The Air Quality Index is not reported on weekends or holidays.

Air Quality Forecast	
Air Quality Forecast Description	Moderate



EMPACT-BIRMINGHAM

TODAY'S AIR
QUALITY INDEX

LOCAL DATA

REGIONAL DATA

PROGRESS REPORT
2001

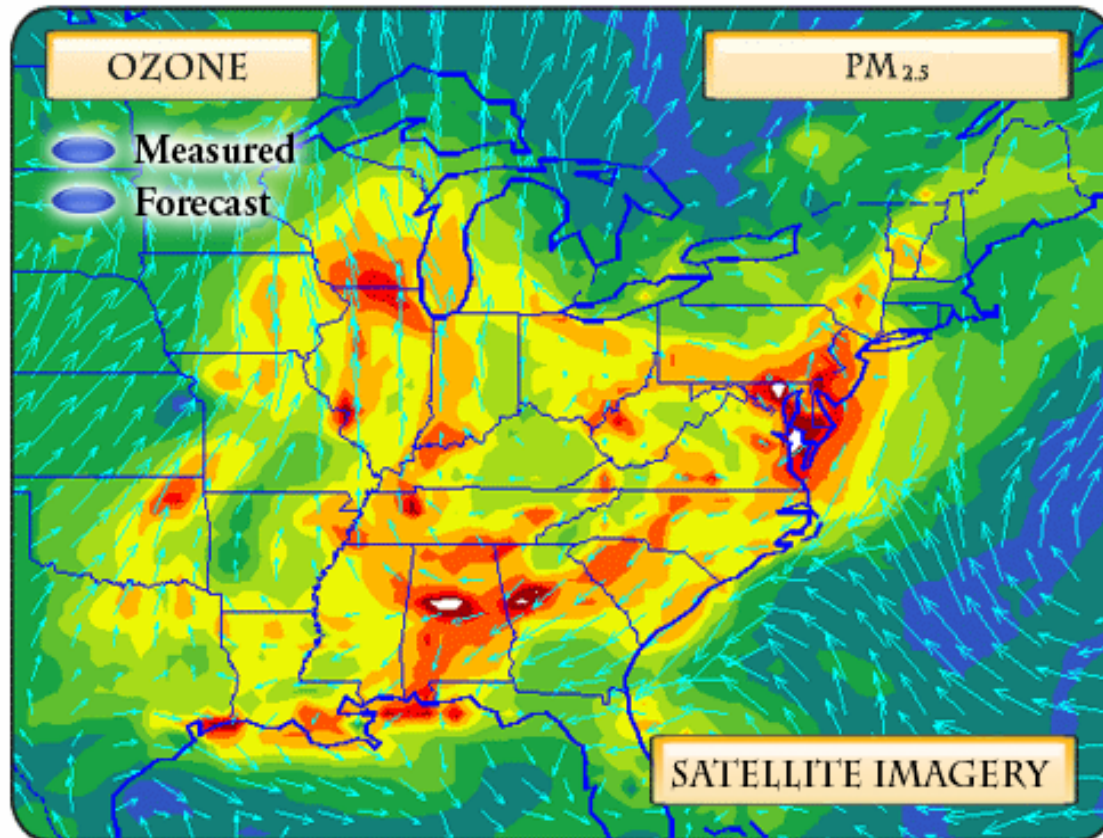
OTHER USEFUL
LINKS

CONTACT &
CREDITS

HOME

REGIONAL DATA

REGIONAL MAPS



IMPACT-BIRMINGHAM

TODAY'S AIR
QUALITY INDEX

LOCAL DATA

REGIONAL DATA

PROGRESS REPORT
2001

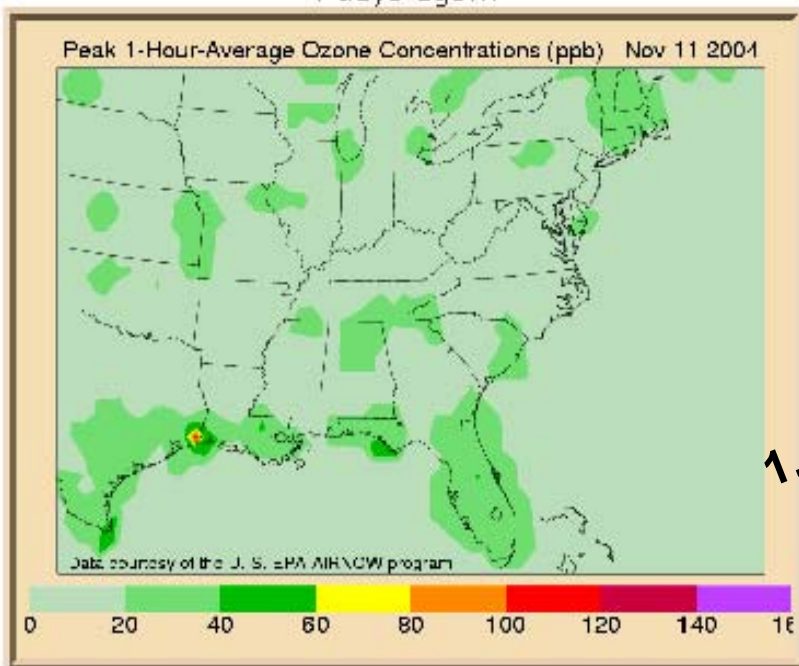
OTHER USEFUL
LINKS

CONTACT &
CREDITS

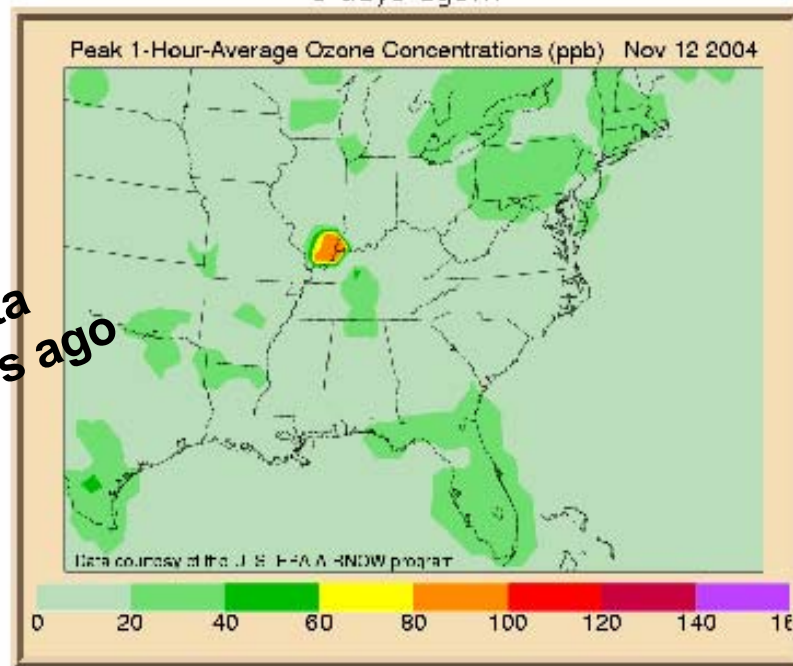
HOME

Regional maps shown in terms of **Parts Per Billion**
ppb Contour Plot (below) - [AQI Contour Plot](#) (next page)

4 days ago...



3 days ago...



Ozone Data
1...2...3...4 days ago

2 days ago...



1 day ago...

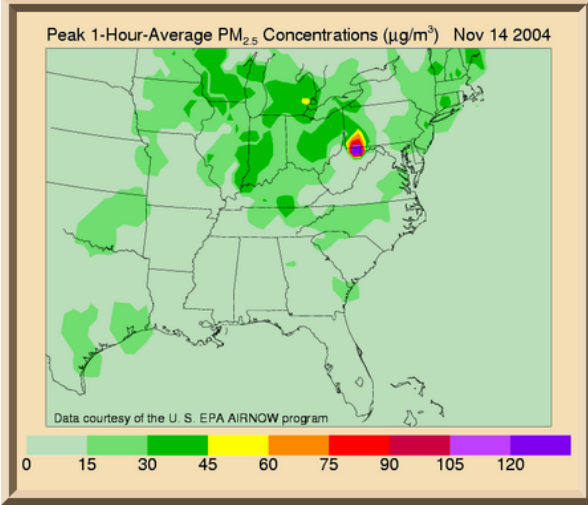
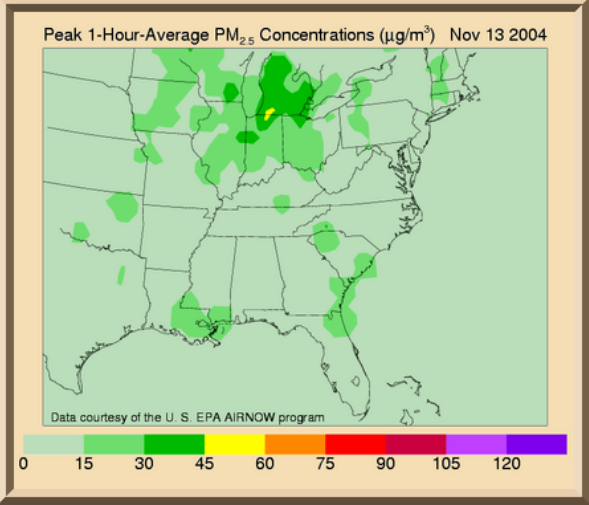
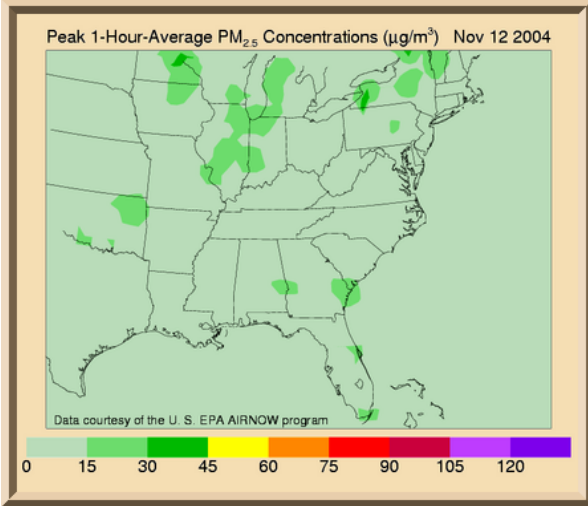
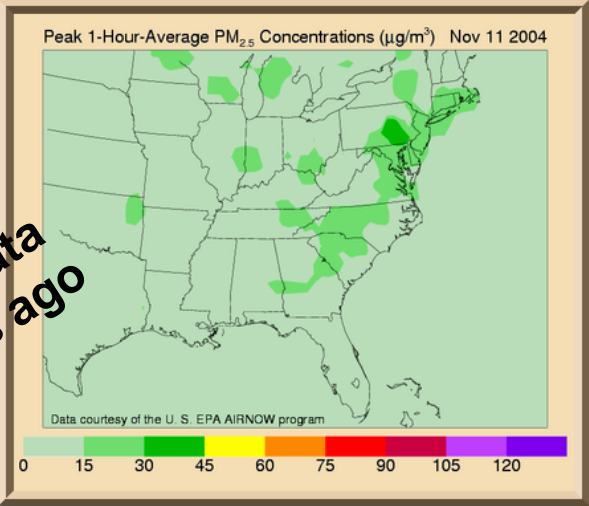


EMPACT

EMPACT-BIRMINGHAM

TODAY'S AIR QUALITY INDEX	LOCAL DATA	REGIONAL DATA	REPORTS	OTHER USEFUL LINKS	CONTACT & CREDITS	HOME
---	----------------------------	-------------------------------	-------------------------	------------------------------------	---------------------------------------	----------------------

**Peak PM2.5 Data
1..2...3...4 days ago**



EMPACT-BIRMINGHAM

- TODAY'S AIR QUALITY INDEX
- LOCAL DATA
- REGIONAL DATA
- PROGRESS REPORT 2001
- OTHER USEFUL LINKS
- CONTACT & CREDITS
- HOME

LOCAL MONITORING DATA

This page provides handy updates of data at the local monitoring sites in the Birmingham Metro area.

Spatial Maps

METRO-BIRMINGHAM MAP OF MONITORING SITES



Single site: Click on appropriate button above to see most-recent 24 hour temporal plots of all mentioned variables at this site.

Temporal Plots

(above map and below)

[Archived images](#)

Click on any species button below to view air quality monitoring data of the most recent 24 hours for that species at ALL SITES.

Ozone

PM₁₀

PM_{2.5}

SO₂

1 HR PEAKS (PPB)

24 HR AVG (AQI)

24 HR AVG (AQI)

3 HR AVG (PPB)

8 HR PEAKS (PPB)

24 HR AVG (µg/m³)

24 HR AVG (µg/m³)

24 HR AVG (AQI)

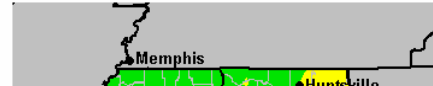
8 HR PEAKS (AQI)

24 HR AVG (PPB)

Bi-State (AL & MS) Archived Ozone Maps
for any past day of the current ozone season
(May 1 to present, 2003)

Sample below

click here



Single site: Click on appropriate button above to see most-recent 24 hour temporal plots of all mentioned variables at this site.

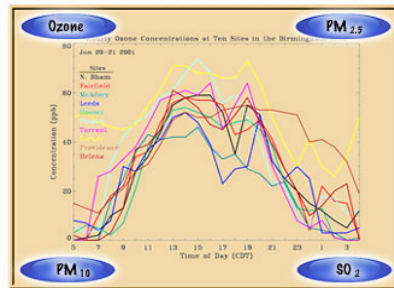
Temporal Plots

(above map and below)

[Archived images](#)

Click on any species button below to view air quality monitoring data of the most recent 24 hours for that species at ALL SITES.

METRO-BIRMINGHAM MONITORING DATA

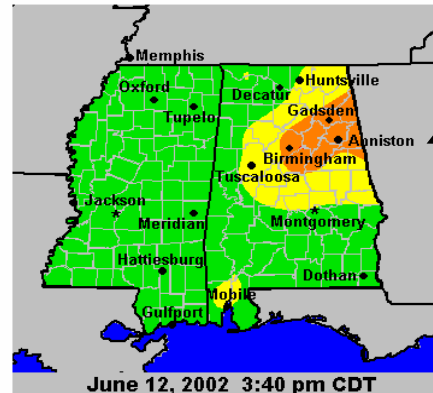


FOR ALL PERTINENT SITES *

Bi-State (AL & MS) Archived Ozone Maps
for any past day of the current ozone season
(May 1 to present, 2003)

Sample below

click here

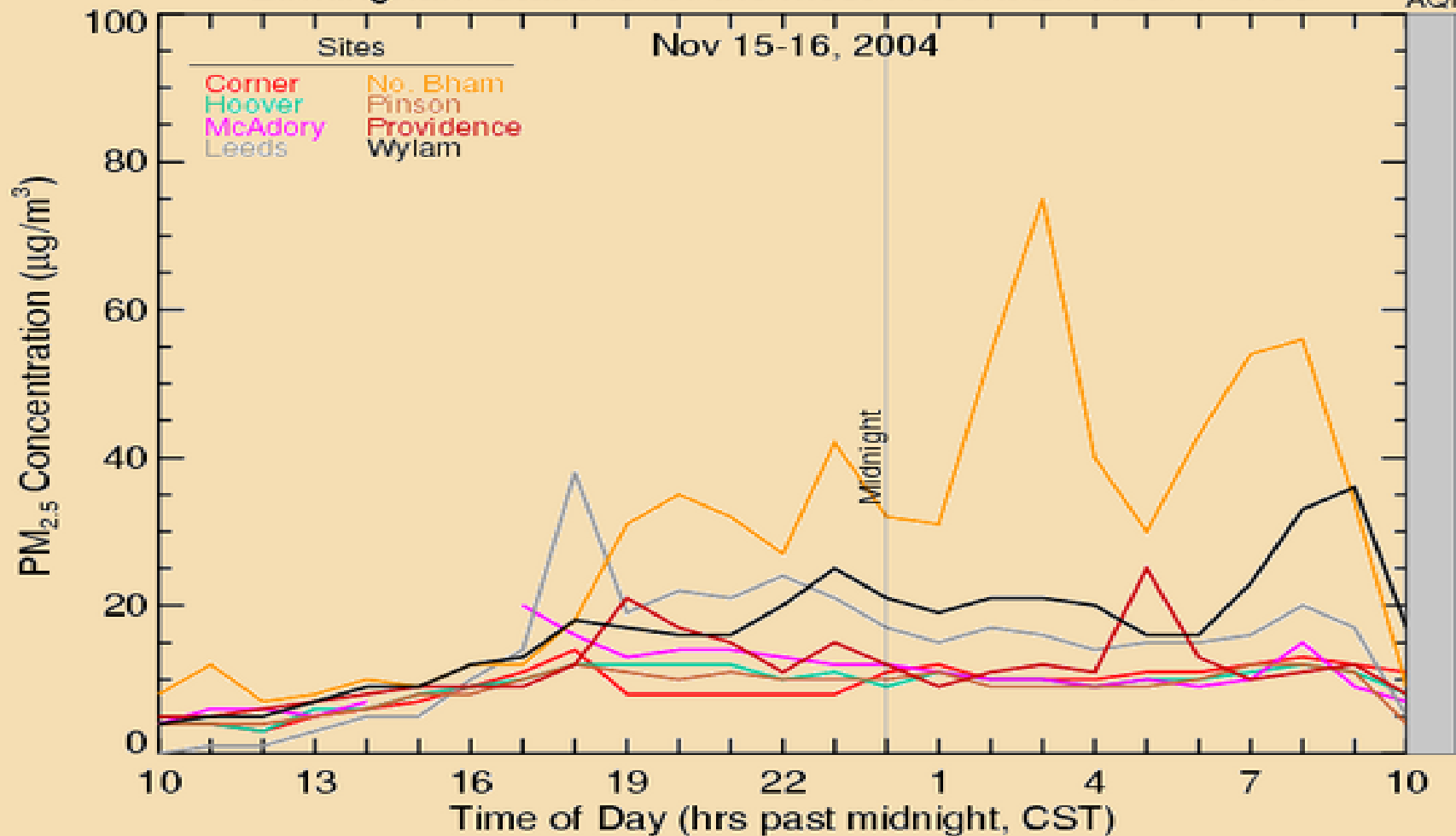


EPA's
Archived
Data

EMPACT-BIRMINGHAM

- TODAY'S AIR QUALITY INDEX
- LOCAL DATA
- REGIONAL DATA
- REPORTS
- OTHER USEFUL LINKS
- CONTACT & CREDITS
- HOME

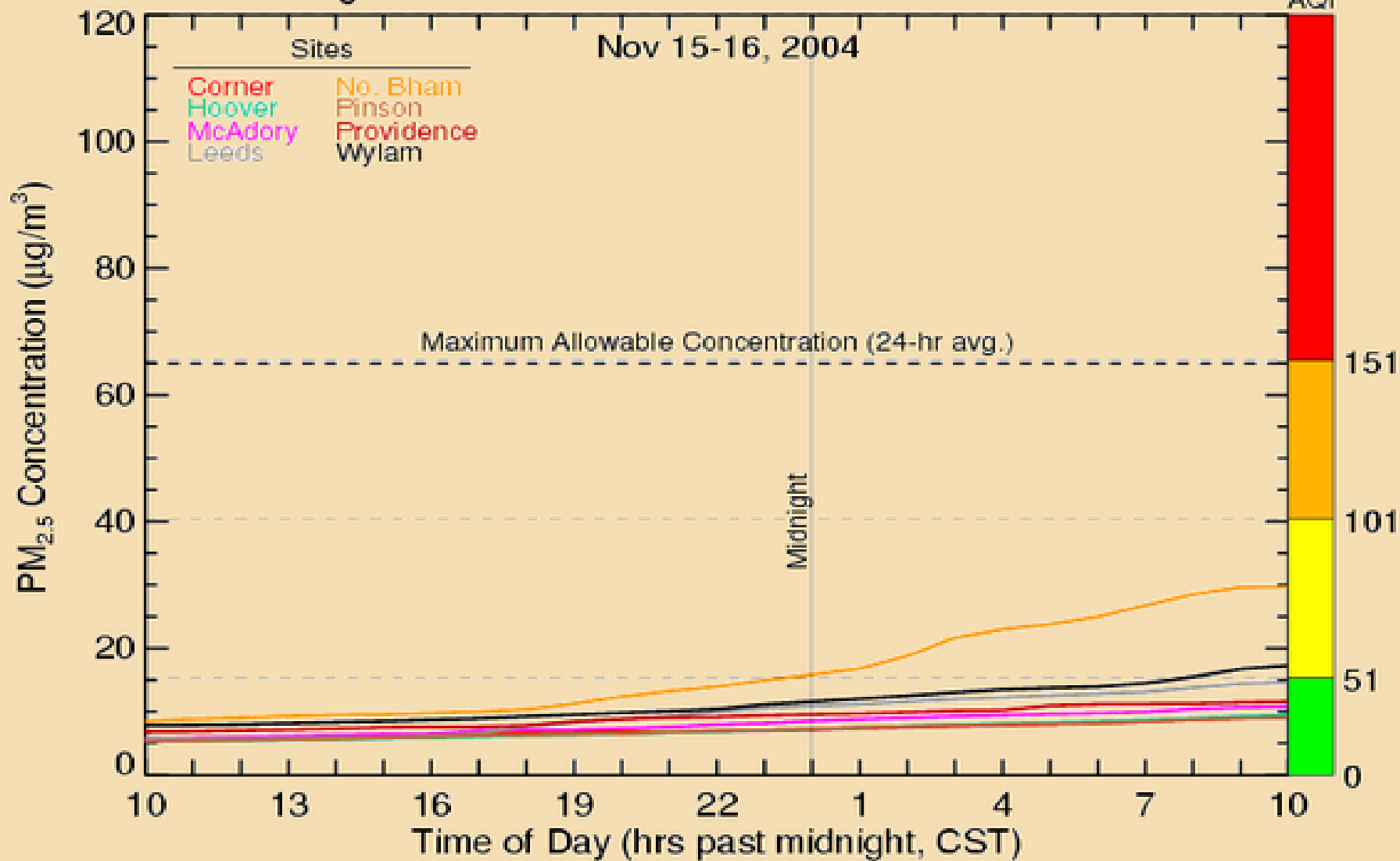
1-Hour-Average PM_{2.5} Concentrations at the 8 Greater Birmingham Stations for the Most Recent 24-Hour Period



AQI Legend



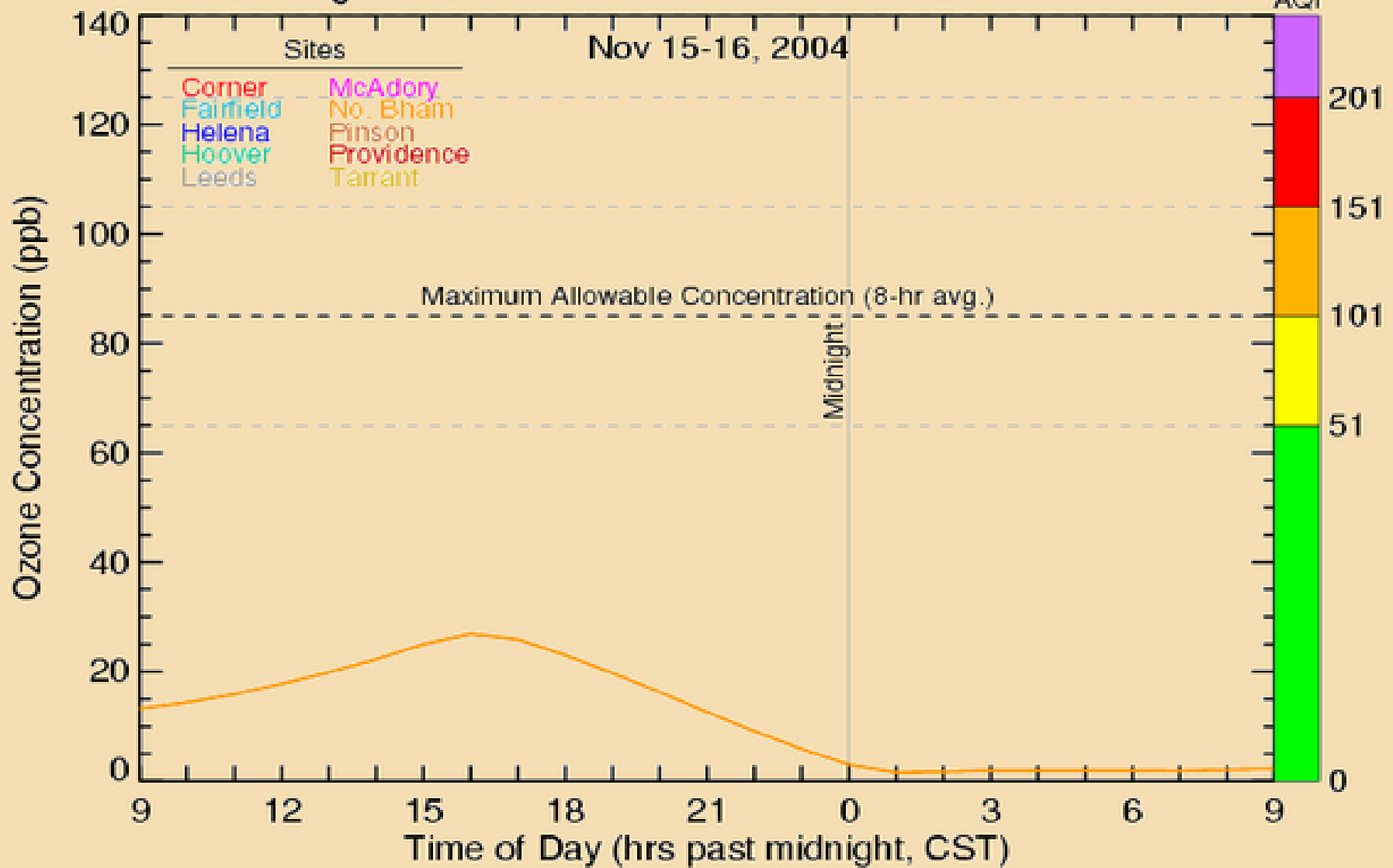
24-Hour-Average PM_{2.5} Concentrations at the 8 Greater Birmingham Stations for the Most Recent 24-Hour Period



AQI Legend

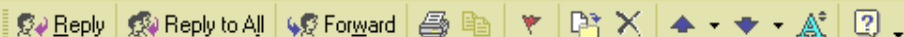


8-Hour-Average Ozone Concentrations at the 10 Greater Birmingham Stations for the Most Recent 24-Hour Period



AQI Legend





From: Bell, Sam
To: GlobalDistribution
Cc:
Subject: CODE ORANGE FORECAST for WEDNESDAY, 11-17-04

Sent: Tue 11/16/2004 2:49 PM

Birmingham Area Air Quality Forecast

Wednesday, November 17, 2004

AIR QUALITY ALERT - Air quality may be unhealthy for sensitive groups.

PRIMARY POLLUTANT – *PARTICULATES (PM2.5)*

AQI Range 101-150 *People with heart or lung disease, older adults, and children should reduce prolonged or heavy exertion.*

For further information regarding air quality forecasts and current air quality levels, go to the links below:

www.jcdh.org

http://vortex.nsstc.uah.edu/empact_bhm/all_stations_1hr_pm2.5.html

<http://www.epa.gov/airnow>

EPA's Actions Citizens Can Take!

www.epa.gov/air/actions/index.html

Let's all do our share for cleaner air!

alabama
partners
for
clean air