



Environmental Justice  
and  
Supplemental Environmental Programs  
in Maryland



- 
- Park Heights Project
  - Diesel Emissions Reduction Programs
  - Supplemental Environmental Projects
  - Air Toxics Initiative



# Park Heights Project

- Managed by Bernard Penner  
MDE Office of Special Programs
- [bpenner@mde.state.md.us](mailto:bpenner@mde.state.md.us)

# Background

- The Park Heights community in Baltimore City, Maryland is a largely low-income and minority community that has long been in need of redevelopment and revitalization



# Background

- Park Heights is an area of concentrated commercial auto body and auto repair shop activities
- The community expressed concern that auto body and auto repair shops were sources of environmental pollution impacting community health – gasoline, solvent, and paint odors/emissions, waste oil spills/improper disposal

# Background

- Other issues – aesthetics (scrap tires) and nuisance noise



---

# METHOD

- Identify Universe
- Create Metric – environmental business performance indicators (EBPIs)
- Baseline Inspections
- Compliance Assistance
- Final Inspections

# Identifying Universe

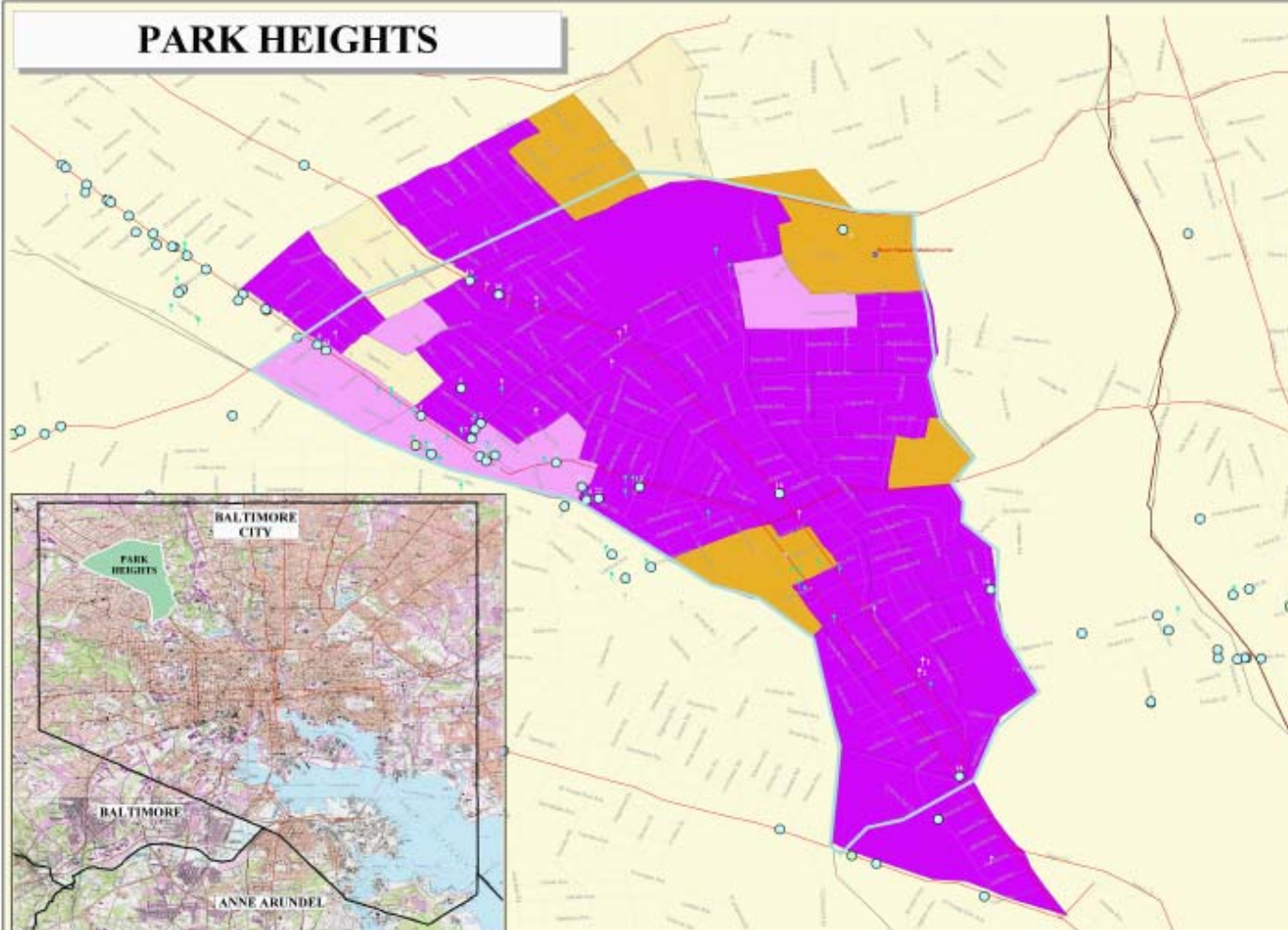
- EPA initially identified 150 facilities. Only 20 had permits.
- Using Global Positioning System devices, citizens located 58 facilities.
- Many of these businesses were not on MDE's or EPA's regulated facilities databases.



# Identify Universe



# PARK HEIGHTS



Label RCRA Small Quantity Generator

●	BALTIMORE POLICE DEPT NORTHWESTERN DIST
●	SCRAPPY INC
●	NORTHWEST BODY & FENDER INC
●	BALTIMORE AUTO FRAME INC
●	BEAUMONT AUTO BODY
●	GOOFREY AUTO WORKS
●	FOURKEY AUTO BODY & FENDER
●	MARSH BODY SHOP INC
●	ROBBINS- COHEN- BERGER- & EPSTEIN MD PA
●	MCINTIRE- JOHN MD
●	HERIT OIL CORP-BALTIMORE
●	GOOFREY AUTO WORKS
●	CROWN STATION MD-025
●	AMCO #25-TANKS
●	AMCO #64735-TANKS
●	AMCO #860-TANKS
●	CATHEDRAL BODY AND FENDER INC
●	DAVIS TIRE CENTER INC
●	NORTHWEST SUB # 3 CITY OF BALTIMORE
●	A 1 AUTO PARTS
●	B & B CLEANERS
●	DAMRO ARLINGTON INC



Label RCRA Large Quantity Generator

●	BALTIMORE REBUILDERS INC
---	--------------------------

Label TRI Facility Map

●	FEPSI-COLA OPERATING CO.
●	PARKS SAUSAGE CO.

**Legend**

**Blockgroup Demographic(s) > State Average**

- %Minority, %Poverty, %Children
- %Minority, %Children
- %Minority, %Poverty
- %Minority

○ Park Heights Boundary

● RCRA Small Quantity Generator

● RCRA Large Quantity Generator

● TRI Facility

● RCRA TSD

Laundry, Cleaning

Gasoline Service

Automobile Repair

Railroads

**StreetMap USA**

- Airport
- Hospital
- Highway
- Primary road
- Secondary and connecting road
- Local road

Data Sources:  
 Roads - ESRI StreetMap  
 Digital Vector Graphics - MapLink  
 Demographics - US Census Bureau  
 TRI, RCRA Facilities - US EPA Geotitles Database  
 Blockgroup Boundaries & Railroads - US Census Bureau  
 Laundry, Cleaners, & Auto Repair Facilities - Data & Webquest  
 Park Heights Boundary - Derived from Baltimore City Planning Department Boundary Description







# E.B.P.I.s

Air Compliance	Air Knowledge	Air Best Practices
Waste Compliance	Waste Knowledge	Waste Best Practices
Water Compliance	Water Knowledge	Water Best Practices

# Inspections

- Inspections were conducted at a statistically valid number of randomly selected facilities in order to obtain a compliance rate
- USEPA Region III inspectors completed over 40 inspections in July, 2002. Approximately the same amount of inspections were conducted in March 2004



# Compliance Assistance

- MDE provided compliance assistance and pollution prevention outreach to the entire universe of auto body shops in Park Heights between the two periods of inspection (July 2002 & April 2004).
- Shops were encouraged to submit an environmental self certification form that discloses their present practices. In exchange for honest self-disclosure shops are not subject to enforcement actions.

# Compliance Assistance, Cont'd

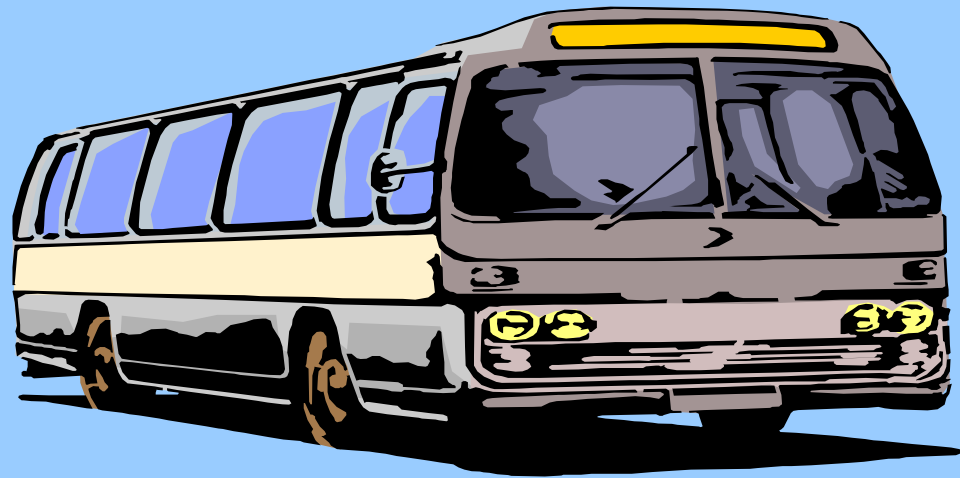
- 38 shops submitted self-disclosure forms.
- Of those, 20 shops participated in 4 separate workshops.
- Change from command and control model to education model.

# School Bus Emission Reductions

- Settlement with Virginia Electric Power Company
  - Approximately \$600,000 to Maryland for mitigation projects in three counties
  - Retro-fit 81 school buses in Prince George's County
  - Retro-fit 58 school buses in Anne Arundel County
  - Montgomery County to purchase ultra-low sulfur diesel (ULSD) fuel and retro-fit 125 school buses

# Transit Bus Emission Reductions

- EPA funds to provide ultra-low sulfur diesel at transit bus facility in East Baltimore
- State funds for transit bus retro-fits in Howard County





# Recent Supplemental Environmental Projects

- Consent decree with Constellation Energy
  - Company will conduct energy efficiency analyses and provide necessary repairs at public schools in Legislative District 45.
- Consent decree with Unilever Home and Personal Care USA
  - Company funded mobile clinic that treats students with asthma.

# Maryland Air Toxics Initiative – Stationary Sources

- EPA grant funding to address air toxics emissions from small stationary sources in two Environmental Benefits Districts
- these areas have sensitive populations (e.g. children, elderly) and are at increased health risk from high levels of toxic air pollution

# Air Toxics Continued

- Small stationary source categories that will be addressed by this project are gas stations, dry cleaners, and auto body shops
- Target sources for air quality compliance inspections. The goal is to conduct inspections at sources in the identified EBDs, and bring all such sources into compliance with air quality requirements thereby reducing emissions of toxic air pollutants to the atmosphere

# Air Toxics Continued

- It is likely that there will be small sources in the area that are not registered or permitted by the Department and therefore are unaware of their regulatory requirements
- This project would attempt to identify these sources and bring them into compliance with air pollution requirements, again resulting in a reduction of toxic air emissions

# Air Toxics Continued

- We will also conduct outreach to educate shop owners and employees about air toxics and regulatory requirements; investigate training opportunities and technologies that help sources reduce emissions; and, provide compliance assistance



- QUESTIONS
- COMMENTS

THANK YOU FOR YOUR ATTENTION

Robert Maddox

[rmaddox@mde.state.md.us](mailto:rmaddox@mde.state.md.us)

Maryland Department of the Environment