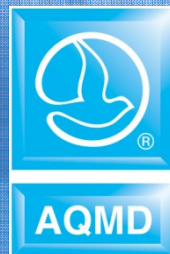


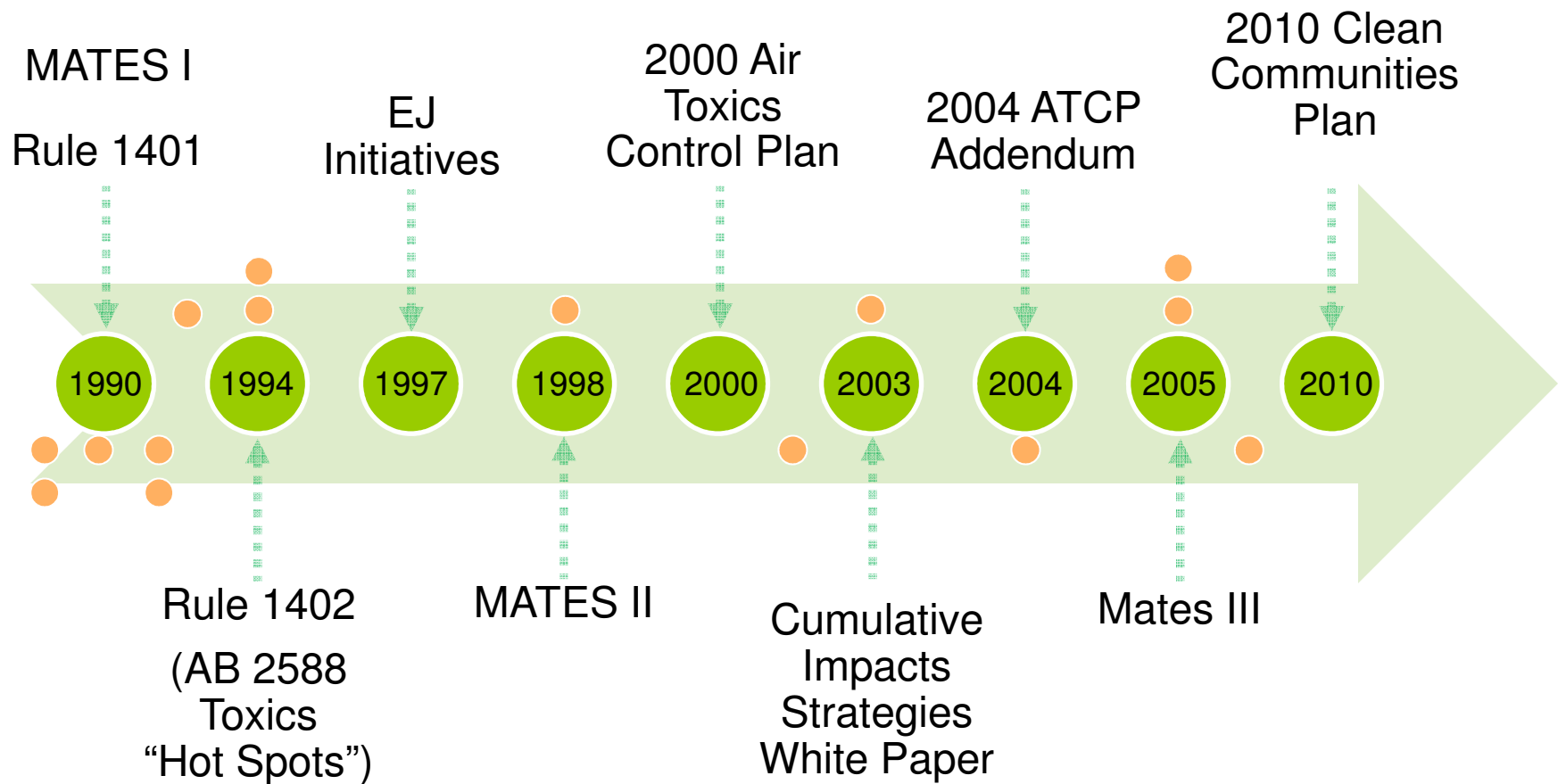
# Addressing Disproportionate Adverse Impacts of Air Pollution in Local Communities

Elaine Chang  
South Coast Air Quality Management District





# Background



● Represents adoption of a stationary source-specific toxic rule

# 2010 Clean Communities Plan

---

- 2010 Draft Clean Communities Plan approved November 2010
- 24 measures addressing air toxics throughout the Air Basin and within a community
- Builds on existing air toxics regulatory program
- Developed with input from stakeholders



A photograph of a residential street. In the foreground, a dark green Ford SUV is parked on the left side of the road. Behind it, a blue sedan and a silver sedan are also parked. The street is lined with large, leafy trees that cast shadows on the pavement. In the background, a large, light-colored building with a flat roof is visible. The sky is bright and clear.

The emphasis of the Clean Communities Plan is on cumulative impacts.

The centerpiece of the Clean Communities Plan is the pilot studies for individual communities.



# Pilot Program

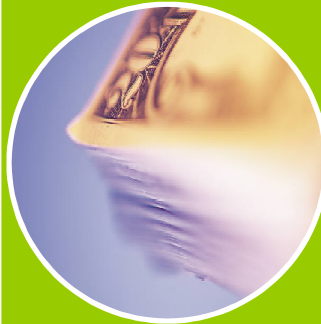
---

- Pilot program starts with two communities
  - San Bernardino
  - Boyle Heights and surrounding areas
- Tailored to the air issues in specific community
- Partner with community stakeholders to identify air issues, develop and implement solutions
- Use structure as template for

# Comprehensive program focuses on air quality and air-related quality of life issues



Expedited development of clean technologies



Identification and securing funding for projects



Selecting and showcasing technologies



Education and outreach

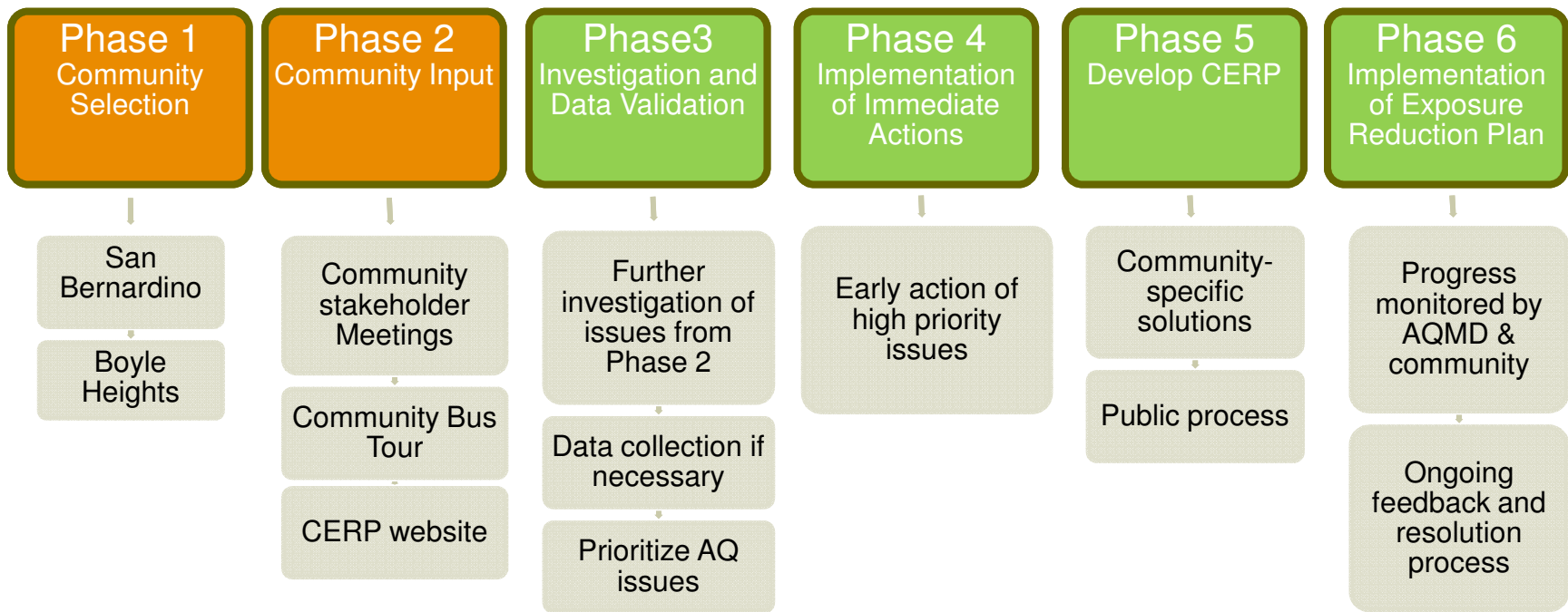


Establishing green job training opportunities





# Community Exposure Reduction Plan Development Phases



# Selection of Pilot Areas


---

- Community selection criteria generally included:
  - Health risk data from MATES III
  - Demographics
  - Areas with high concentrations of toxic-emitting facilities in close proximity to residential receptors
  - Community-identified air quality issues
  - Willingness of community to participate in process
- Pilot limited to two communities – Resources and learning exercise
- Will develop template for other communities



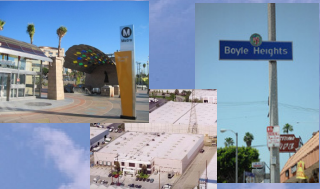


**Pilot Study**  
**Community Exposure**  
**Reduction Plan for the**  
**City of San Bernardino**



April 2012

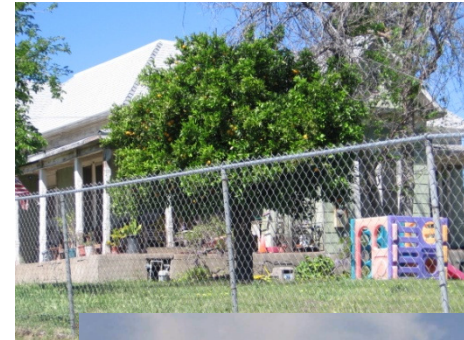
**Pilot Study**  
**Community Exposure**  
**Reduction Plan for**  
**Boyle Heights and**  
**Surrounding Area**



April 2012

# City of San Bernardino

- Population 209,924
- Size 81.68 square miles
- Approximately 14% unemployment
- BNSF railyard has highest cancer risk in state of California(1)
- Other industrial and commercial sources where air quality issues have been raised include:
  - Rendering plant - odors
  - Ready mix facility – proximity to residents and schools – dust
  - Warehouse/distribution centers
- Major rail and truck corridors for goods movement



1 Based on CARB Health Risk Assessment













# Boyle Heights

- Unincorporated portion of LA County
- Population 92,785
- Size 6.5 square miles
- Unemployment rate is 7.9% (East LA)
- Heavy industrial and commercial businesses
  - Rendering plants
  - Lead Acid Battery Recycling
  - 4 intermodal railyards (Commerce)







30  
31  
ELA College  
via E 1st St

No Left Turn

Primera Tarta  
SABONICH  
SPECIAL  
Tarta de Vierge  
en su  
Sundays & etc.  
Jueves de 10:00am  
\$1.99

PLAY  
MOM'S G...  
SE HACEN ARREG...  
PARA TODA...  
cal BODAS, QUINCEAÑER...  
(323) 526-...

ORALES...  
ON...  
ERALES...

Vio  
323  
M...  
Guo...  
Cu...  
Du...  
Mo...  
Acc...

DE BRAS  
A ROOM







# Grants and Funding

- Awarded:
  - AQMD-Funded Health Studies
    - ❖ Loma Linda University
    - ❖ UCLA
  - U.S. EPA Targeted Air Shed Grant
    - ❖ Localized Incentive Programs for Reduction of Toxic Air Contaminants and Criteria Pollutants
  - U.S. EPA Grant 105
    - ❖ Installation of air filtration systems in schools
    - ❖ Deployment of hybrid-electric and electric heavy-duty trucks
- Applied for:
  - Building Capacity to Reduce Children's Environmental Exposures in Child-Occupied Settings (EPA)
    - ❖ 2010 CCP Children's Initiatives

# Other Funding

- Carl Moyer funds available for mobile equipment projects that reduce NOx and PM
- Proposition 1B funds available for goods movement projects
- Additional funds available for air filtration systems at schools





A young girl with dark hair and a small earring is shown in profile, blowing on a dandelion seed head. The background is a bright, sunny field with green grass and a clear blue sky. Several dandelion seeds are captured in mid-air, drifting away from the girl. The overall mood is peaceful and hopeful.

# Next Steps

- Continue working with Stakeholders
- Continue implementation of Pilot Studies
- Develop guidance for other communities