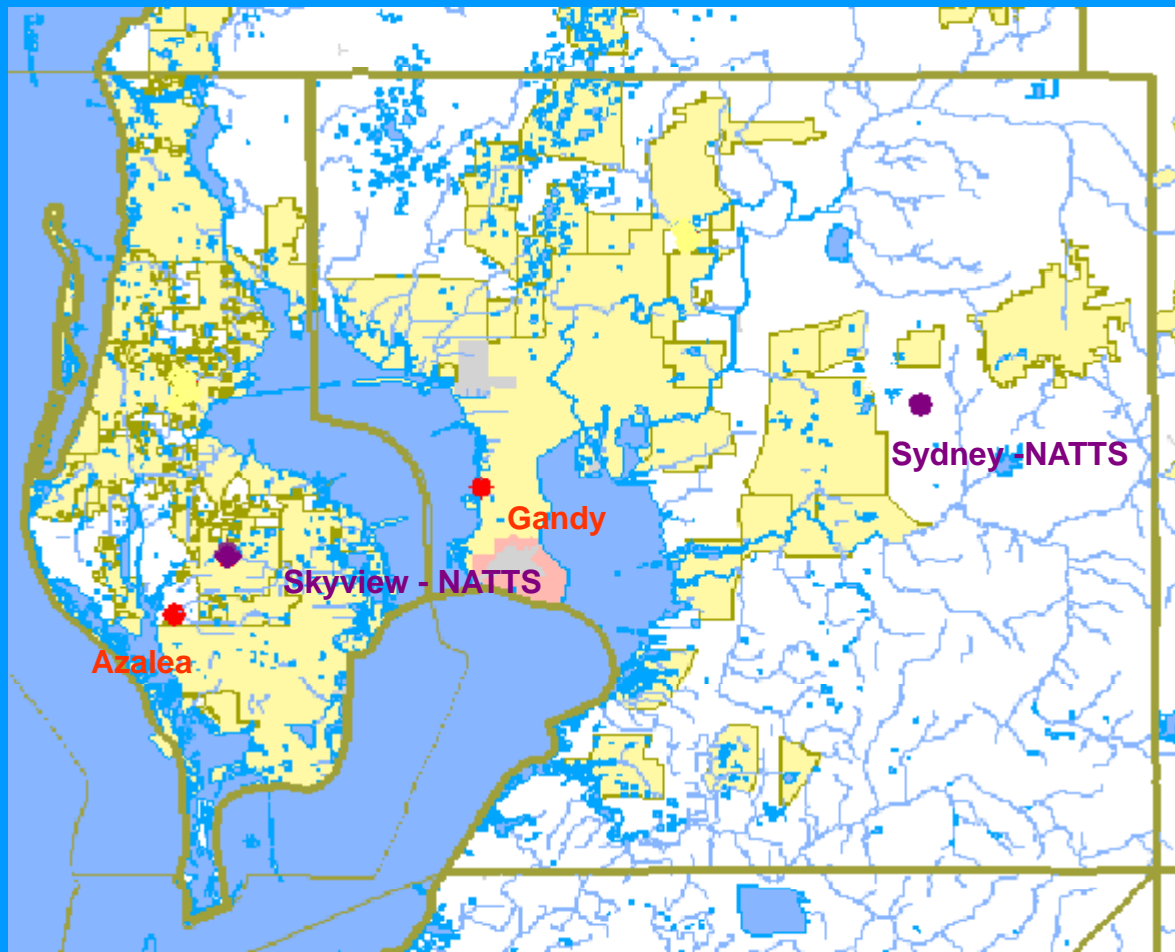


# Tampa Bay Region Air Toxics Sites - 2008



## National Air Toxics Trends Sites (NATTS)

- VOCs (including acrolein), 1/6;
- SVOCs/PAHs, 1/6;
- Carbonyls, 1/6;
- Metals, 1/6;
- Hexavalent Chromium, 1/6;
- PM-2.5 Speciation (MetOne SASS), 1/3;
- Aethalometer – BC, Continuous (Magee Scientific, AE21); and
- Met Parameters – Wind speed, Wind direction, ambient temperature & pressure.

# Tampa Bay Region NATTS Major Risk Drivers

## VOCs

Acrylonitrile (TO-15)

Benzene (TO-15)

1,3-Butadiene (TO-15)

Carbon Tetrachloride (TO-15)

1,4-Dichlorobenzene (TO-15)

1,1,2,2-Tetrachloroethane (TO-15)

## Metals

Hexavalent Chromium (Research method)

Arsenic (IO-3)

## Carbonyls

Acetaldehyde (TO-11A)

Acrolein (TO-15)